



Price
£425,000

Freehold

4x  2x  1x 

**St. Mildred's Road,
Margate, Kent, CT9**

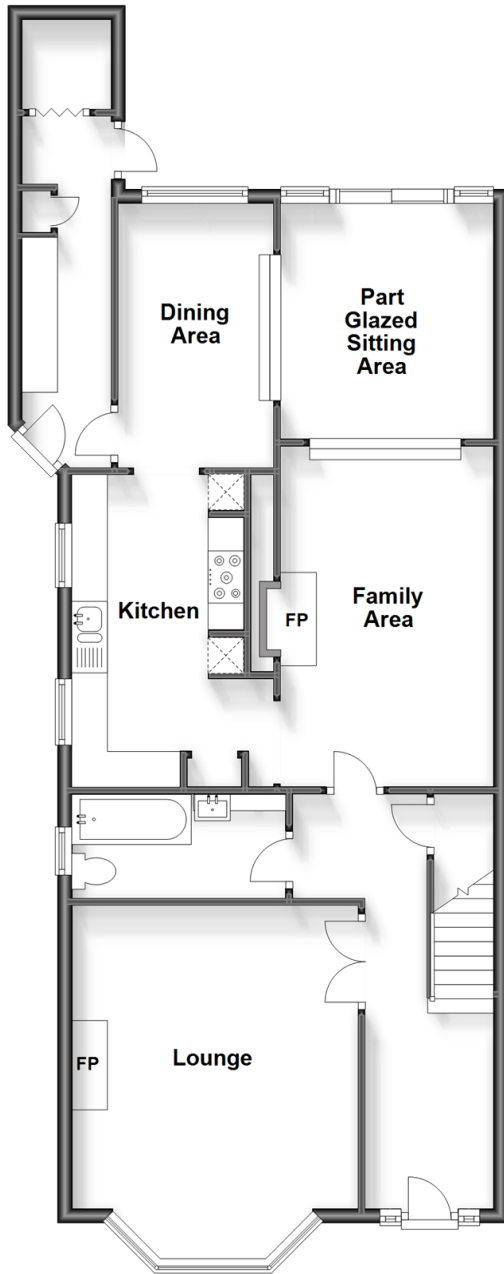
OVER 60?

Secure this property
for up to **59% less!**

Wards
Helping you move forwards

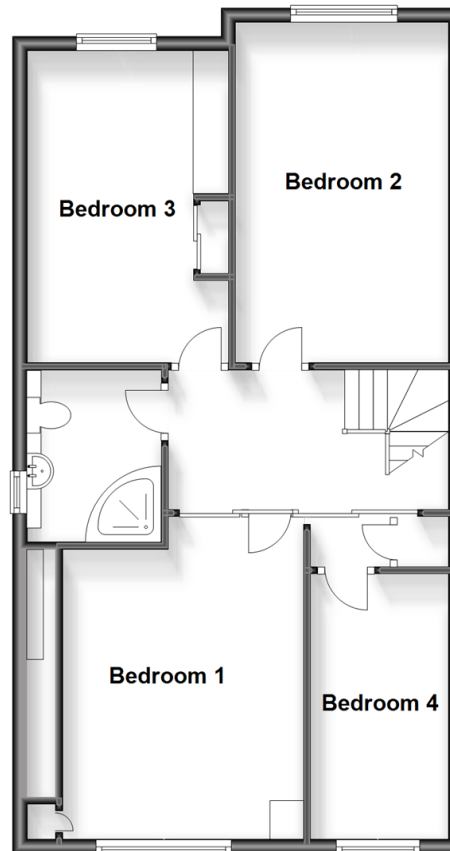
Split Level Ground Floor

Approx. 89.4 sq. metres (962.8 sq. feet)



First Floor

Approx. 66.6 sq. metres (717.0 sq. feet)



Accommodation

GROUND FLOOR

Hallway

Lounge: 13'10 x 13'3 (4.22m x 4.04m)

Bathroom: 9'8 x 4'7 (2.95m x 1.40m)

Kitchen: 14'3 x 7'7 (4.35m x 2.31m)

Family Area: 15'8 x 9'10 (4.78m x 3.00m)

Dining Room: 12'1 x 7'2 (3.69m x 2.19m)

Part Glazed Sitting Area: 11'1 x 9'7 (3.38m x 2.92m)

Lean To

FIRST FLOOR

Landing

Bedroom 2: 15'9 x 9'10 (4.80m x 3.00m)

Bedroom 1: 12'4 x 10'6 (3.76m x 3.20m)

Bedroom 3: 14'3 x 7'8 (4.35m x 2.34m)

Bedroom 4: 12'1 x 6'5 (3.69m x 1.96m)

Shower Room : 7'10 x 6'0 (2.39m x 1.83m)

OUTSIDE

Front Garden

Rear Garden



Main features

- Charming and well presented family home
- Convenient location
- Walking distance to local shops, parks, beaches and local primary schools
- Stunning low maintenance garden
- Ample living accommodation to satisfy all family needs
- Must be seen to appreciate the potential this property provides



Nearest Schools

Primary Schools: Drapers Mills Primary 0.4 miles, Cliftonville Primary 0.4 miles, Northdown Primary 0.5 miles
Secondary Schools: Laleham Gap School 0.3 miles, St Anthony's School 0.4 miles



Transport Information

Train Stations: Margate 1.4 miles, Ramsgate 3.0 miles, Westgate-on-Sea 3.1 miles



Address

St. Mildred's Road, Margate, Kent, CT9



Directions

For directions to this property please contact us.



Wards
Helping you move forwards

Call Cliftonville Branch 01843 227447 ■ wardsofkent.co.uk



- A private rental licensing scheme applies to some properties in this area, please contact us before proceeding
- Appliances & services are untested, dimensions are approximate and floor plans are not to scale

- Legal advice should be taken to verify fixtures/fittings, planning, alterations and/or lease details
- Through a Homewise Home For Life Plan people aged 60+ can secure this property for up to 59% less, by purchasing a Lifetime Lease.



15110808/20231102/DM/NF