



Price

£675,000

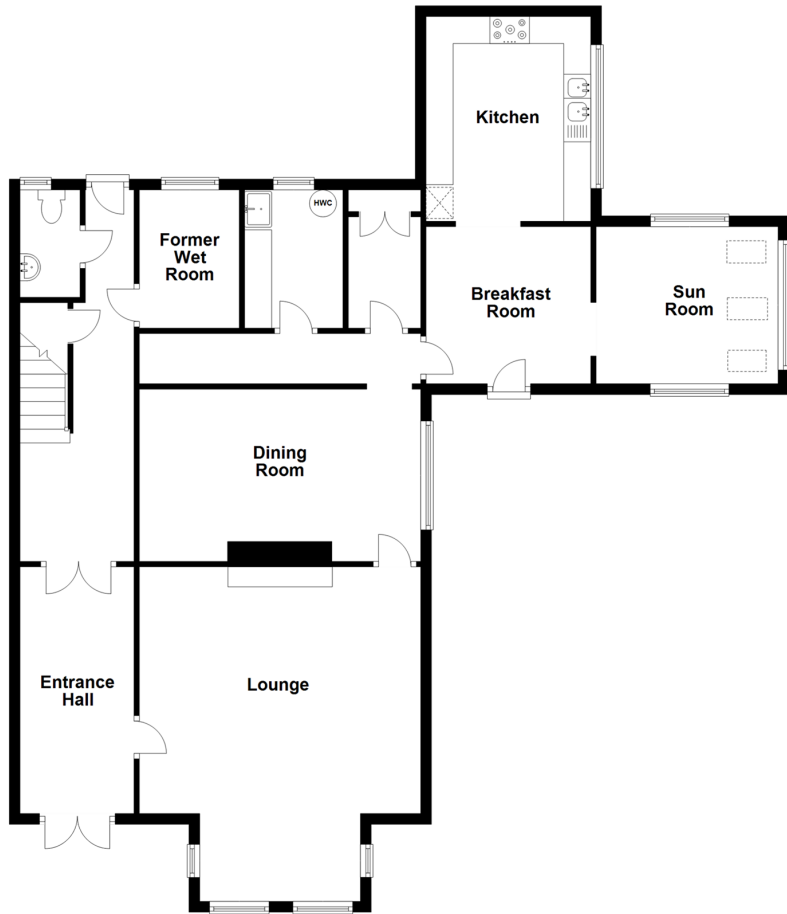
Freehold

5x  2x  3x 

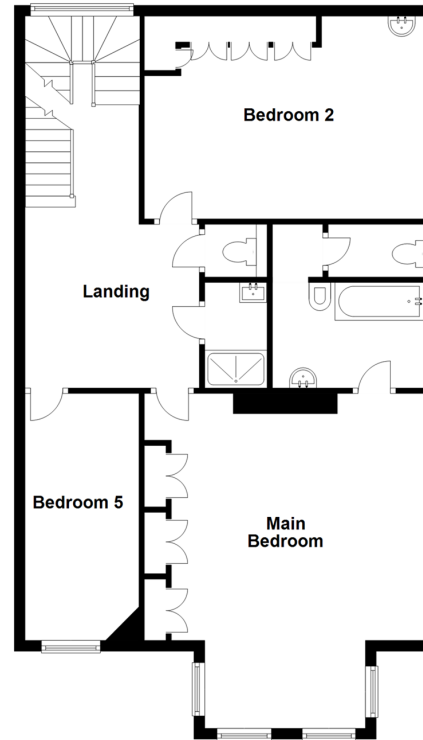
**Lonsdale Avenue,
Margate, Kent, CT9**

Wards
Helping you move forwards

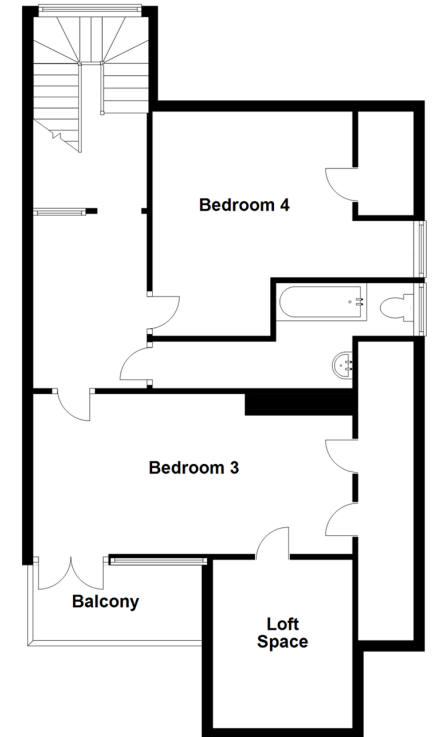
Ground Floor
Approx. 121.7 sq. metres (1310.4 sq. feet)



First Floor
Approx. 90.5 sq. metres (974.6 sq. feet)



Second Floor
Approx. 71.7 sq. metres (771.5 sq. feet)



Accommodation

GROUND FLOOR

Entrance Hall

Lounge: 20'2 x 17'1 (6.15m x 5.21m)

Dining Room : 17'6 x 10'5 (5.34m x 3.18m)

Cloakroom : 6'2 x 3'3 (1.88m x 0.99m)

Former Wet Room : 7'10 x 5'10 (2.39m x 1.78m)

Breakfast Room : 9'11 x 9'6 (3.02m x 2.90m)

Kitchen: 12'5 x 9'11 (3.79m x 3.02m)

Sun Room : 11'7 x 9'6 (3.53m x 2.90m)

FIRST FLOOR

Landing

Main Bedroom : 19'1 x 17'1 (5.82m x 5.21m)

En-suite Bathroom : 9'8 x 9'3 (2.95m x 2.82m)

Separate Toilet

Shower Room

Bedroom 2: 17'1 x 11'11 (5.21m x 3.63m)

Bedroom 5: 14'11 x 6'11 (4.55m x 2.11m)

SECOND FLOOR

Landing

Bedroom 4: 10'3 x 9'7 (3.13m x 2.92m)

Bathroom : 11'9 x 6'9 (3.58m x 2.06m)

Bedroom 3: 13'8 x 11'9 (4.17m x 3.58m)

Balcony

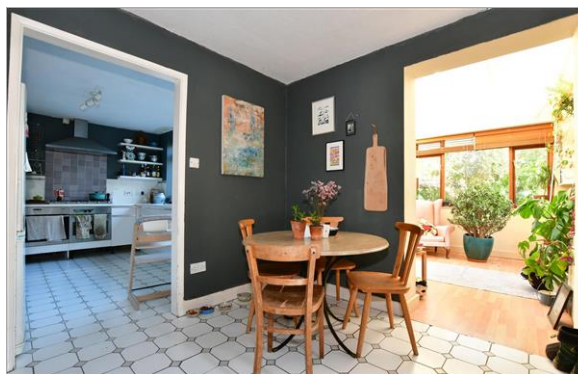
Loft Space

OUTSIDE

Front Garden

Garage

Rear Garden



Main features

- Fantastic double fronted family home with sea views
- Period features throughout and double garage
- Amazing entrance hall
- Plenty of living space
- Must be seen to appreciate this amazing home
- Walking distance to sandy beaches and shops
- Huge potential to own this unique property in a sought after location



Nearest Schools

Primary Schools: Cliftonville Primary 0.3 miles, Palm Bay Primary 0.5 miles, Northdown Primary 0.6 miles

Secondary Schools: Laleham Gap School 0.3 miles, St Anthony's School 0.5 miles



Transport Information

Train Stations: Margate 1.4 miles, Broadstairs 2.3 miles, Westgate-on-Sea 2.9 miles



Address

Lonsdale Avenue, Margate, Kent, CT9



Directions

For directions to this property please contact us.



Call Cliftonville Branch 01843 227447 ■ wardsofkent.co.uk



- A private rental licensing scheme applies to some properties in this area, please contact us before proceeding
- Appliances & services are untested, dimensions are approximate and floor plans are not to scale

- Legal advice should be taken to verify fixtures/fittings, planning, alterations and/or lease details



15109766/20211122/DM/NF