

OVER 60?

Secure this property
for up to **59% less!**



Price
£600,000
Freehold

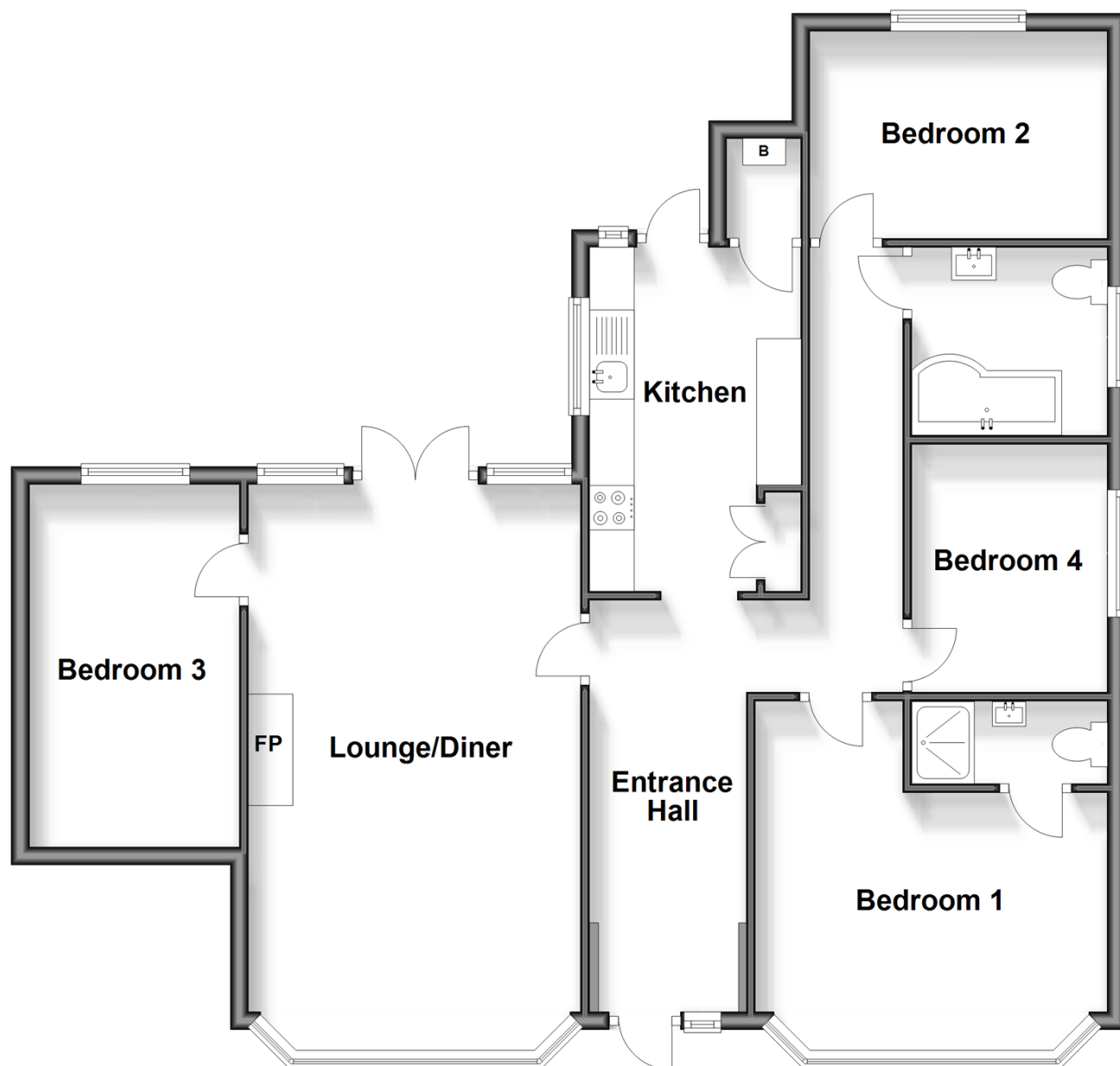
4x  2x  1x 

Watson Avenue, Chatham, Kent, ME5

Wards
Helping you move forwards

Ground Floor

Approx. 92.8 sq. metres (999.1 sq. feet)



Accommodation

GROUND FLOOR

Entrance Hall

Lounge/Diner: 20'3 x 12'1 (6.18m x 3.69m)

Kitchen: 12'6 x 7'0 (3.81m x 2.14m)

Bedroom 1: 13'7 x 12'11 (4.14m x 3.94m)

En-suite Shower Room

Bedroom 2: 11'10 x 7'0 (3.61m x 2.14m)

Bedroom 3: 13'3 x 7'9 (4.04m x 2.36m)

Bedroom 4: 8'11 x 7'5 (2.72m x 2.26m)

Bathroom

OUTSIDE

Front Garden

Driveway

Rear Garden



Main features

- Detached bungalow finished to highest standard
- Impressive stunning decor and beautiful kitchen and bathrooms
- Superb versatile space inside and excellent garden, with hot tub included
- Brilliant location for a choice local schools and great access for motorway links
- Ideal for a family or a couple downsizing who want great entertaining space



Nearest Schools

Primary Schools: Horsted Junior School 0.2 miles, Oaklands Junior School 0.9 miles, Ridge Meadow Primary 1.1 miles

Secondary Schools: Walderslade Girls' School 1.0 miles,



Transport Information

Train Stations: Chatham 2.8 miles, Gillingham 3.1 miles, Strood 3.3 miles



Address

Watson Avenue, Chatham, Kent, ME5



Directions

For directions to this property please contact us.



Call Chatham Branch 01634 841243 ■ wardsofkent.co.uk



■ Legal advice should be taken to verify fixtures/fittings, planning, alterations and/or lease details ■ Appliances & services are untested, dimensions are approximate and floor plans are not to scale
■ Through a Homewise Home For Life Plan people aged 60+ can secure this property for up to 59% less, by purchasing a Lifetime Lease.



10435630/20240918/BC/BC