



OVER 60?

Secure this property
for up to **59% less!**

Price
£200,000

Freehold

3x  1x  1x 

**Castle Road, Chatham,
Kent, ME4**

Wards
Helping you move forwards



Main features

- Victorian terraced house
- Separate lounge and great sized kitchen/diner
- Great choice for first time buyers
- Excellent buy to let investor looking to add their portfolio
- Ideal location for access to town and local schools.

Accommodation

GROUND FLOOR

Lounge: 12'7 x 10'5 (3.84m x 3.18m)

Kitchen/Diner: 12'6 x 10'5 (3.81m x 3.18m)

Rear Lobby
Bathroom

SPLIT-LEVEL FIRST FLOOR

Landing

Bedroom 1: 12'7 x 9'9 (3.84m x 2.97m)

Bedroom 2: 12'6 x 10'3 (3.81m x 3.13m)

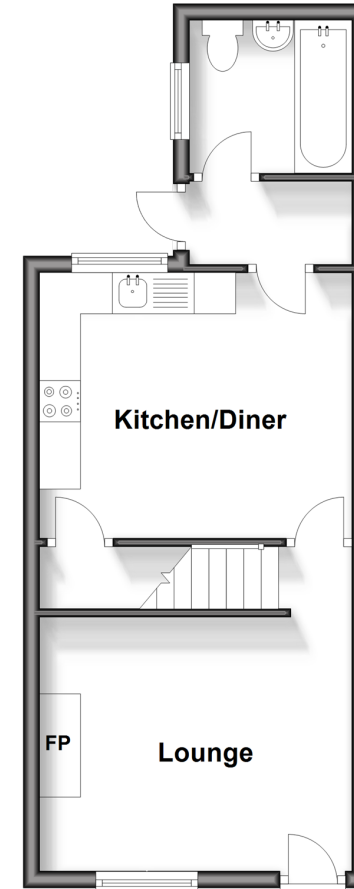
Bedroom 3: 9'2 x 7'0 (2.80m x 2.14m)

OUTSIDE

Rear Garden

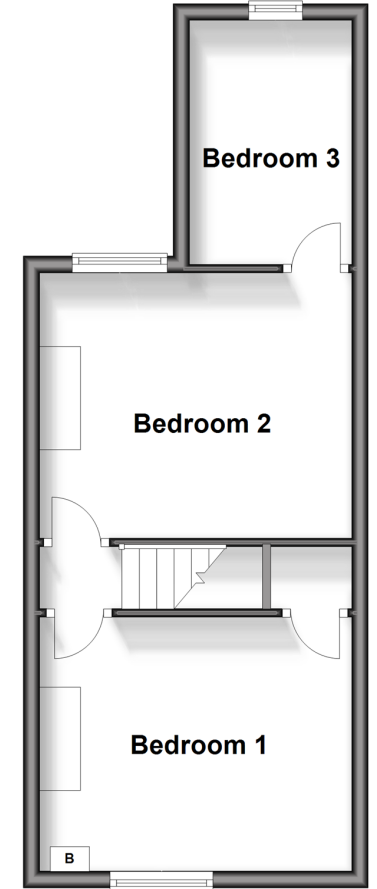
Ground Floor

Approx. 33.8 sq. metres (363.7 sq. feet)



Split Level First Floor

Approx. 33.8 sq. metres (363.7 sq. feet)



Call Chatham - 01634 841243 ■ wardsof Kent.co.uk

- Legal advice should be taken to verify fixtures/fittings, planning, alterations and/or lease details
- Appliances & services are untested, dimensions are approximate and floor plans are not to scale
- Through a Homewise Home For Life Plan people aged 60+ can secure this property for up to 59% less, by purchasing a Lifetime Lease.



10435409/20240229/BC/BC