



Guide Price
£320,000

Freehold

3x  2x  1x 

**Ruth Street, All Saints
Garden, Chatham, Kent,
ME4**

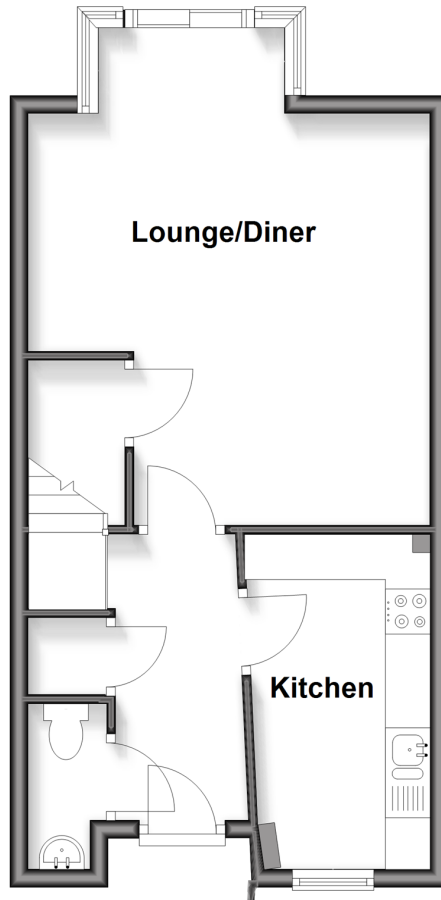
OVER 60?

Secure this property
for up to **59% less!**

Wards
Helping you move forwards

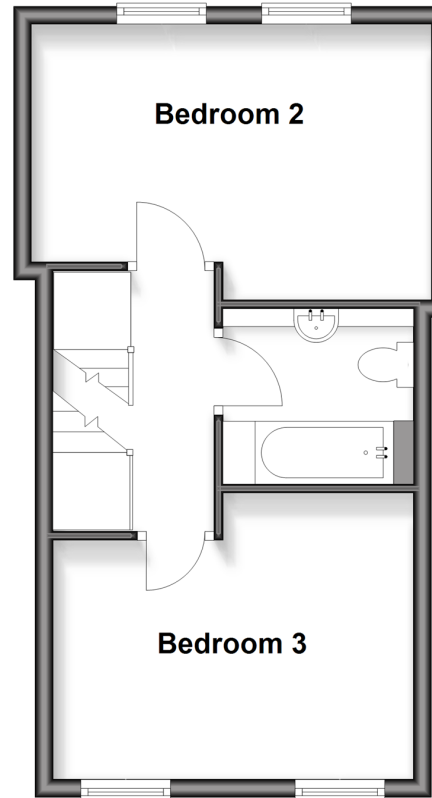
Ground Floor

Approx. 38.8 sq. metres (417.1 sq. feet)



First Floor

Approx. 35.5 sq. metres (382.4 sq. feet)



Second Floor

Approx. 33.8 sq. metres (364.0 sq. feet)



Accommodation

GROUND FLOOR

Entrance Hallway

Kitchen: 12'2 x 6'5 (3.71m x 1.96m)

Lounge/Diner: 14'11 x 14'6 (4.55m x 4.42m)

Downstairs Cloakroom

FIRST FLOOR

Landing

Bedroom 2: 14'7 x 10'2 (4.45m x 3.10m)

Bedroom 3: 13'1 x 10'5 (3.99m x 3.18m)

Bathroom

SECOND FLOOR

Landing

Bedroom 1: 16'3 x 13'3 (4.96m x 4.04m)

En-suite Shower Room

OUTSIDE

Front Garden

Driveway

Rear Garden



Main features

- Modern townhouse in a popular development
- Downstairs cloakroom, bathroom, and en-suite shower room
- Great sized lounge/diner to entertain and separate kitchen
- Brilliant location for a choice of local schools and local shops within walking distance
- Excellent choice for a family looking for space they can grow in to



Nearest Schools

Primary Schools: Phoenix Junior Academy 0.1 miles, All Saints C of E Primary, Chatham 0.2 miles, New Road School and Nursery Unit 0.2 miles

Secondary Schools: Victory Academy 0.3 miles, Brompton



Transport Information

Train Stations: Chatham 0.6 miles, Gillingham 1.1 miles, Rochester 1.1 miles



Address

Ruth Street, All Saints Garden, Chatham, Kent, ME4



Directions

For directions to this property please contact us.



Wards
Helping you move forwards

Call Chatham Branch 01634 841243 ■ wardsofkent.co.uk



- Legal advice should be taken to verify fixtures/fittings, planning, alterations and/or lease details
- Appliances & services are untested, dimensions are approximate and floor plans are not to scale
- Through a Homewise Home For Life Plan people aged 60+ can secure this property for up to 50% less, by purchasing a Lifetime Lease.



10435628/20251004/AP/BC