



OVER 60?

Secure this property
for up to **59% less!**

Price
£345,000

Freehold

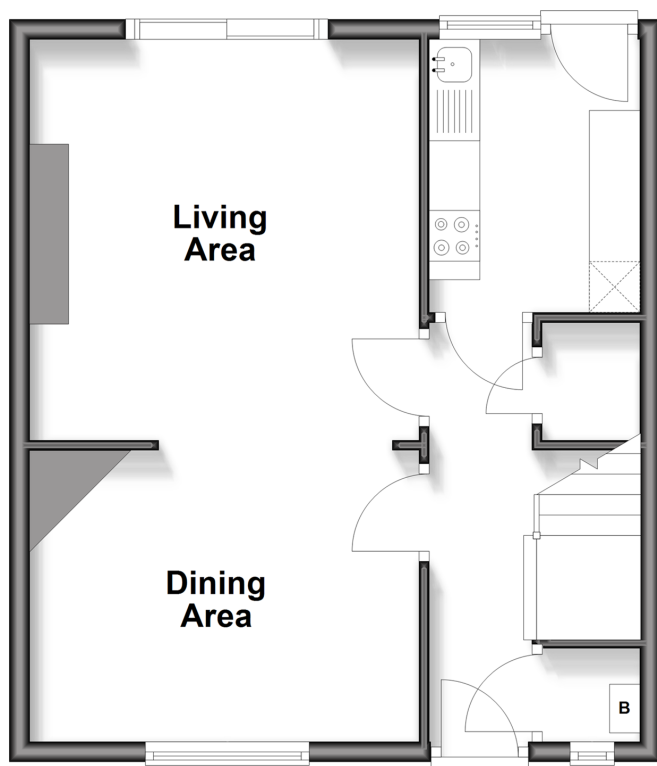
3x  1x  2x 

**Ordnance Street,
Chatham, Kent, ME4**

Wards
Helping you move forwards

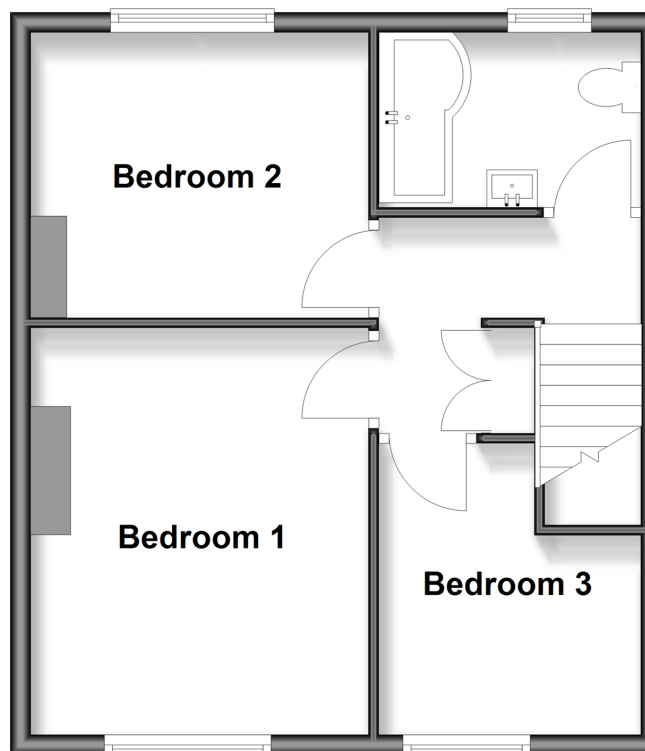
Ground Floor

Approx. 41.8 sq. metres (449.4 sq. feet)



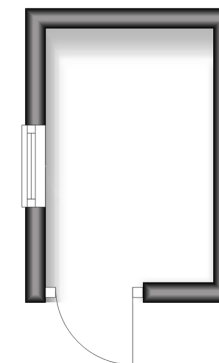
First Floor

Approx. 42.1 sq. metres (452.6 sq. feet)



Outbuilding

Approx. 4.2 sq. metres (44.7 sq. feet)



Accommodation

GROUND FLOOR

Entrance Hallway

Dining Area: 12'7 x 9'4 (3.84m x 2.85m)

Living Area: 12'10 x 12'6 (3.91m x 3.81m)

Kitchen: 8'8 x 6'10 (2.64m x 2.08m)

FIRST FLOOR

Landing

Bedroom 1: 13'6 x 11'1 (4.12m x 3.38m)

Bedroom 2: 11'1 x 8'11 (3.38m x 2.72m)

Bedroom 3: 9'5 x 8'6 (2.87m x 2.59m)

Bathroom

OUTSIDE

Driveway

Front Garden

Rear Garden

Outbuilding



Main features

- Terraced family house in a sought after location
- Good condition throughout, ready to move straight into
- Walking distance to Chatham Railway Station
- Excellent position for popular local schools
- Ideal choice for first time buyers or those upgrading to a family home



Nearest Schools

Primary Schools: St Michael's RC Primary 0.2 miles, Balfour Junior School 0.3 miles, Phoenix Junior Academy 0.5 miles

Secondary Schools: St John Fisher Catholic



Transport Information

Train Stations: Chatham 0.3 miles, Rochester 0.6 miles, Strood 1.5 miles



Address

Ordance Street, Chatham, Kent, ME4



Directions

For directions to this property please contact us.



Wards
Helping you move forwards

Call Chatham Branch 01634 841243 ■ wardsofkent.co.uk



- Legal advice should be taken to verify fixtures/fittings, planning, alterations and/or lease details
- Appliances & services are untested, dimensions are approximate and floor plans are not to scale
- Through a Homewise Home For Life Plan people aged 60+ can secure this property for up to 50% less, by purchasing a Lifetime Lease.



10425823/20250911/AP/BC