



Price
£215,000

Freehold

3x  1x  1x 

**Mount Road, Chatham,
Kent, ME4**

OVER 60?

Secure this property
for up to **59% less!**

Wards
Helping you move forwards



Main features

- Victorian bay fronted terraced house with 3 separate bedrooms
- Some updating required, with potential to improve
- Excellent choice for buy to let investors
- Great for first time buyers looking for a family home
- Walking distance to Chatham Railway Station and town centre, as well as local schools

Accommodation

GROUND FLOOR

Entrance Hallway

Lounge: 14'4 x 11'6 (4.37m x 3.51m)

Kitchen: 9'6 x 8'10 (2.90m x 2.69m)

Bathroom

FIRST FLOOR

Landing

Bedroom 1: 11'3 x 9'9 (3.43m x 2.97m)

Bedroom 2: 12'0 x 7'0 (3.66m x 2.14m)

Bedroom 3: 9'1 x 7'0 (2.77m x 2.14m)

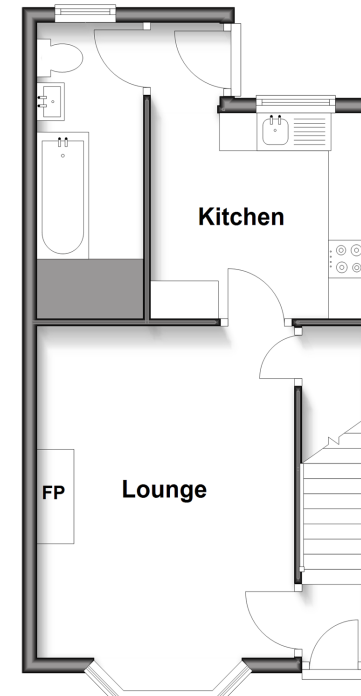
OUTSIDE

Front Garden

Rear Garden

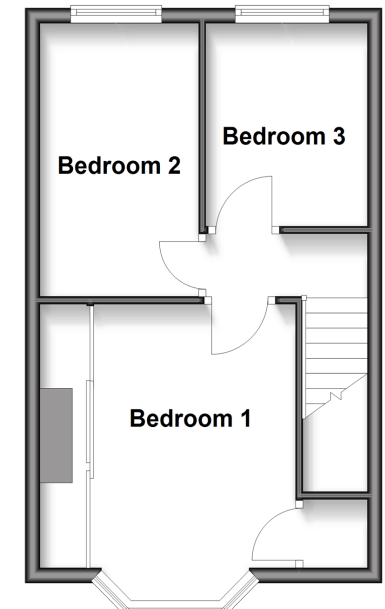
Ground Floor

Approx. 35.2 sq. metres (379.0 sq. feet)



First Floor

Approx. 32.3 sq. metres (347.1 sq. feet)



Call Chatham - 01634 841243 ■ wardsofkent.co.uk

- Legal advice should be taken to verify fixtures/fittings, planning, alterations and/or lease details
- Through a Homewise Home For Life Plan people aged 60+ can secure this property for up to 50% less, by purchasing a Lifetime Lease.

- Appliances & services are untested, dimensions are approximate and floor plans are not to scale



10427579/20250902/JC/BC