



OVER 60?

Secure this property
for up to **59% less!**

Guide Price

£230,000

Freehold

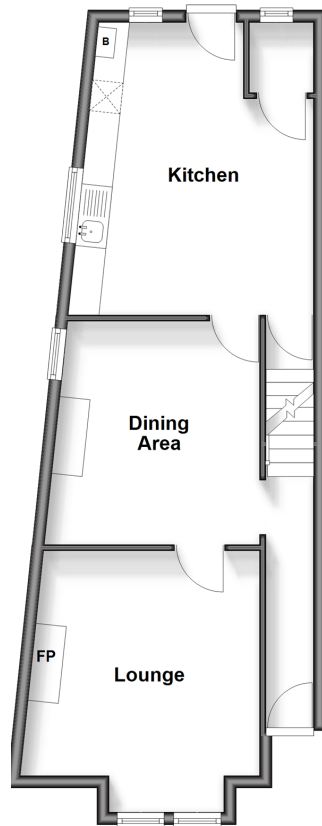
3x  1x  1x 

**Institute Road, Chatham,
Kent, ME4**

Wards
Helping you move forwards

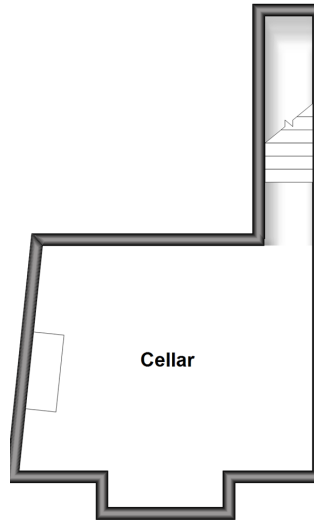
Ground Floor

Approx. 50.8 sq. metres (547.0 sq. feet)



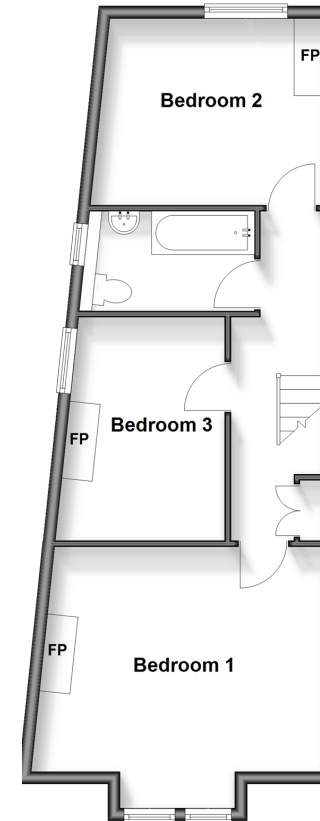
Basement

Approx. 20.7 sq. metres (222.8 sq. feet)



Split Level First Floor

Approx. 51.6 sq. metres (555.7 sq. feet)



Accommodation

GROUND FLOOR

Entrance Hall

Lounge: 11'8 x 11'7 (3.56m x 3.53m)

Dining Area: 11'10 x 11'3 (3.61m x 3.43m)

Kitchen/Breakfast Room

BASEMENT

Cellar Room: 15'0 x 11'11 (4.58m x 3.63m)

FIRST FLOOR

Landing

Bedroom 1: 14'9 x 11'7 (4.50m x 3.53m)

Bedroom 2: 12'0 x 7'4 (3.66m x 2.24m)

Bedroom 3: 10'10 x 10'3 (3.30m x 3.13m)

Bathroom: 9'3 x 5'1 (2.82m x 1.55m)

OUTSIDE

Rear Garden



Main features

- End of terrace house with separate bedrooms
- Set over 3 floors with easy to maintain garden
- Ready to move into due to current owners making it homely
- Ideal location due to proximity to local amenities, train station and great schools
- Ideal for an investor looking to add to their portfolio or a first time buyer looking for their first home



Nearest Schools

Primary Schools: All Saints C of E Primary, Chatham 0.1 miles, New Road School and Nursery Unit 0.1 miles, Brompton-Westbrook Primary 0.4 miles

Secondary Schools: Brompton Academy 0.2 miles, St



Transport Information

Train Stations: Chatham 0.6 miles, Gillingham 0.8 miles, Rochester 1.0 miles



Address

Institute Road, Chatham, Kent, ME4



Directions

For directions to this property please contact us.



Call Chatham Branch 01634 841243 ■ wardsofkent.co.uk



- Legal advice should be taken to verify fixtures/fittings, planning, alterations and/or lease details
- Appliances & services are untested, dimensions are approximate and floor plans are not to scale
- Through a Homewise Home For Life Plan people aged 60+ can secure this property for up to 50% less, by purchasing a Lifetime Lease.



10432993/20251004/AP/RC