



Price
£360,000

Freehold

4x  2x  2x 

**Pagitt Street, Chatham,
Kent, ME4**

OVER 60?

Secure this property
for up to **59% less!**

Wards
Helping you move forwards



Main features

- Terrace house with off road parking
- Spacious house ready to move into
- New windows, new front door and new back door
- Perfect purchase for a family wanting/needing more space
- Ideal location as within walking distance of fantastic local schools, train station and local amenities

Accommodation

GROUND FLOOR

Entrance Hall

Lounge/Diner: 18'4 x 11'9 (5.59m x 3.58m)

Sitting Room: 12'8 x 9'3 (3.86m x 2.82m)

Kitchen: 10'2 x 8'7 (3.10m x 2.62m)

Bathroom

FIRST FLOOR

Landing

Bedroom 1: 15'11 x 9'4 (4.85m x 2.85m)

Bedroom 2: 10'10 x 8'8 (3.30m x 2.64m)

Bedroom 3: 11'9 x 8'8 (3.58m x 2.64m)

Bedroom 4: 9'3 x 8'7 (2.82m x 2.62m)

Bathroom

OUTSIDE

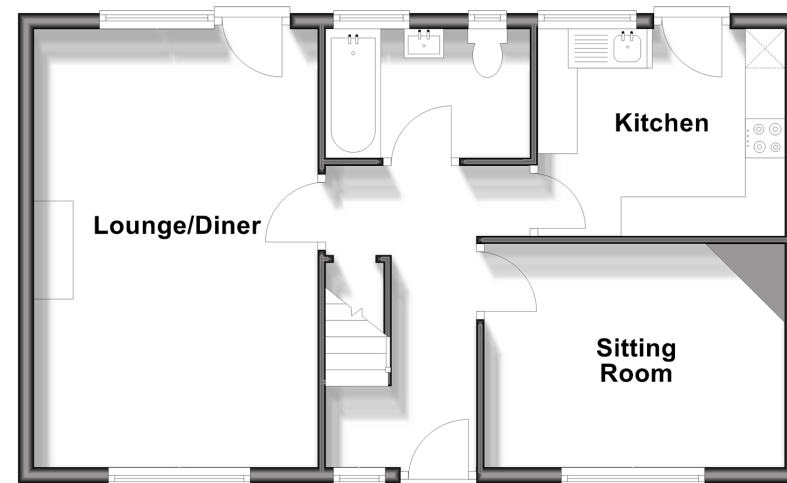
Front Garden

Driveway

Rear Garden

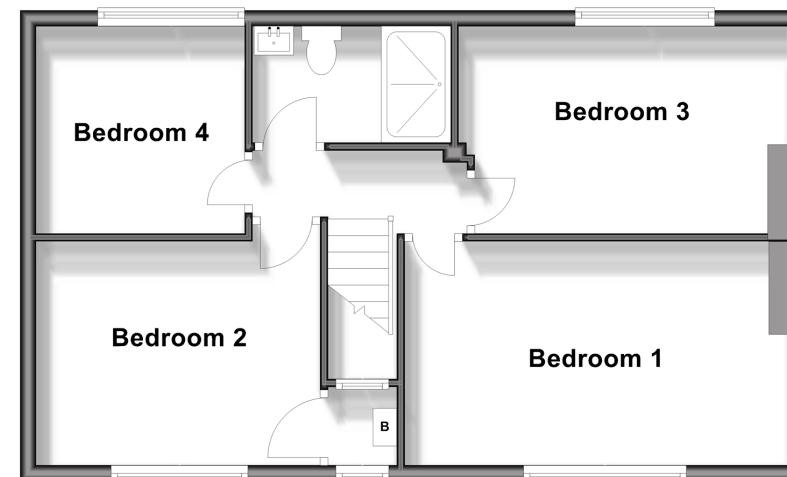
Ground Floor

Approx. 53.4 sq. metres (574.3 sq. feet)



First Floor

Approx. 53.6 sq. metres (577.5 sq. feet)



Call Chatham - 01634 841243 ■ wardsofkent.co.uk

- Legal advice should be taken to verify fixtures/fittings, planning, alterations and/or lease details
- Appliances & services are untested, dimensions are approximate and floor plans are not to scale
- Through a Homewise Home For Life Plan people aged 60+ can secure this property for up to 59% less, by purchasing a Lifetime Lease.



10435782/20250321/BC/RC