



OVER 60?

Secure this property
for up to **59% less!**

Price

£350,000

Freehold

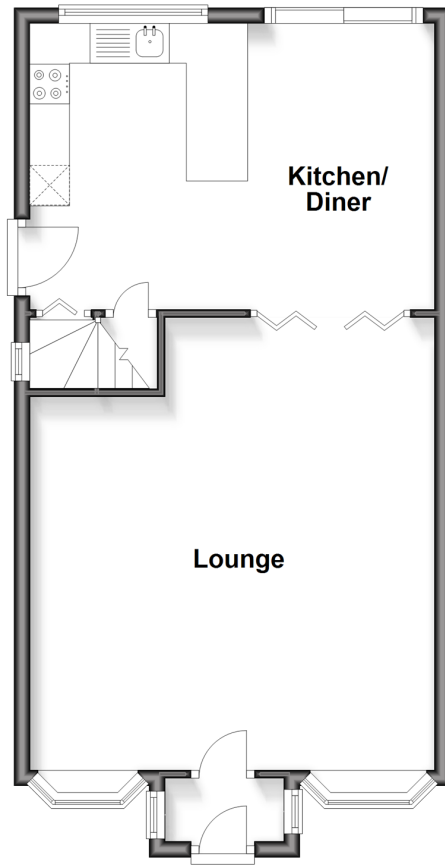
5x  2x  1x 

**Constitution Road,
Chatham, Kent, ME5**

Wards
Helping you move forwards

Split Level Ground Floor

Approx. 49.6 sq. metres (533.6 sq. feet)



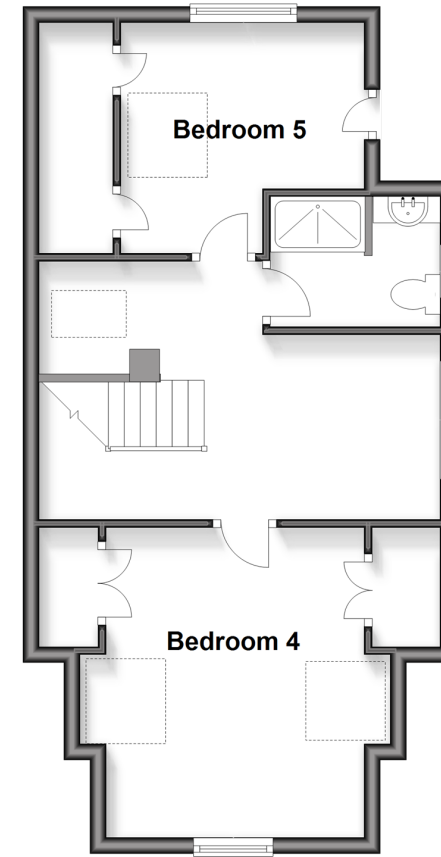
Split Level First Floor

Approx. 48.0 sq. metres (516.4 sq. feet)



Split Level Second Floor

Approx. 46.2 sq. metres (497.1 sq. feet)



Accommodation

SPLIT LEVEL GROUND FLOOR

Ground Terrace

Entrance Porch

Lounge: 18'1 x 16'9 (5.52m x 5.11m)

Kitchen/Diner: 16'8 x 11'9 (5.08m x 3.58m)

SPLIT LEVEL FIRST FLOOR

Landing

Bedroom 1: 16'9 x 12'0 (5.11m x 3.66m)

Bedroom 2: 9'2 x 8'2 (2.80m x 2.49m)

Bathroom

Bedroom 3: 12'5 x 7'10 (3.79m x 2.39m)

SPLIT LEVEL SECOND FLOOR

Landing

Bedroom 4: 12'9 x 12'3 (3.89m x 3.74m)

Bedroom 5: 10'3 x 9'9 (3.13m x 2.97m)

Shower Room

OUTSIDE

Double Garage

Rear Garden



Main features

- Unique detached house in popular centralised location
- Large double garage with spacious tiered garden
- Generous living space that offers versatile living
- Ideal for first time buyers or young families needing room to grow
- Perfect location for local amenities, great schools and transport links



Nearest Schools

Primary Schools: Luton Junior School 0.3 miles, All Saints C of E Primary, Chatham 0.6 miles, Brompton-Westbrook Primary 0.9 miles

Secondary Schools: Victory Academy 0.8 miles, Chatham



Transport Information

Train Stations: Chatham 1.2 miles, Rochester 1.8 miles, Gillingham 1.9 miles



Address

Constitution Road, Chatham, Kent, ME5



Directions

For directions to this property please contact us.



Wards
Helping you move forwards

Call Chatham Branch 01634 841243 ■ wardsofkent.co.uk



■ Legal advice should be taken to verify fixtures/fittings, planning, alterations and/or lease details ■ Appliances & services are untested, dimensions are approximate and floor plans are not to scale
■ Through a Homewise Home For Life Plan people aged 60+ can secure this property for up to 59% less, by purchasing a Lifetime Lease.



10433245/20250303/RC/RC