



**Modern
Auction**

**£150,000
Freehold**

3x  1x  1x 

**Cromwell Terrace,
Chatham, Kent, ME4**

Wards
Helping you move forwards



Main features

- Victorian terraced house close to town centre
- In need of some updating, with room to improve
- Excellent choice for a buy to let investment
- For Sale by Modern Auction - T&C's apply
- Subject to an undisclosed Reserve Price, Buyer's fees apply

Accommodation

GROUND FLOOR

Lounge: 12'1 x 9'6 (3.69m x 2.90m)
 Kitchen: 12'0 x 9'5 (3.66m x 2.87m)
 Bathroom

BASEMENT

Cellar

FIRST FLOOR

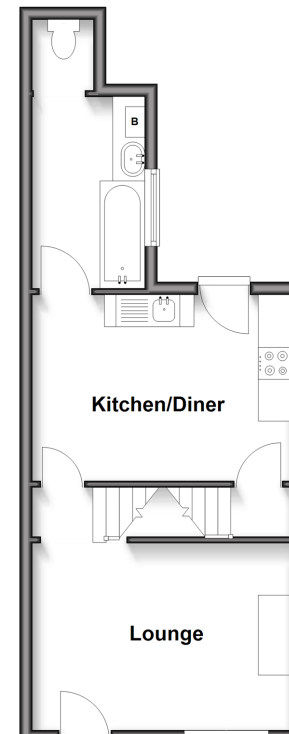
Landing
 Bedroom 1: 12'3 x 9'6 (3.74m x 2.90m)
 Bedroom 2: 12'3 x 9'6 (3.74m x 2.90m)
 Bedroom 3: 10'0 x 5'11 (3.05m x 1.80m)

OUTSIDE

Rear Garden

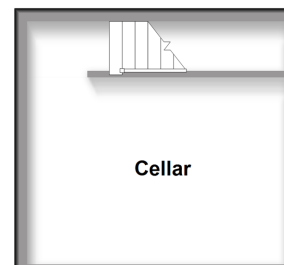
Split Level Ground Floor

Approx. 34.2 sq. metres (367.7 sq. feet)



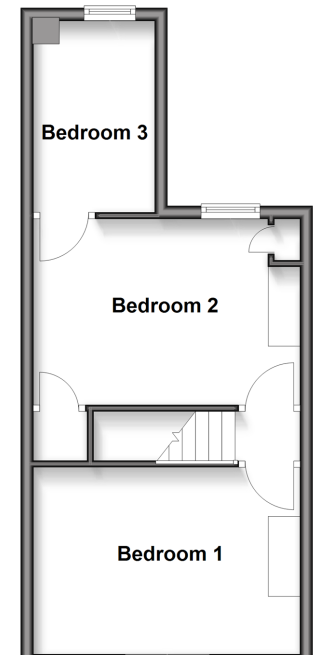
Basement

Approx. 15.4 sq. metres (165.4 sq. feet)



Split Level First Floor

Approx. 32.5 sq. metres (349.7 sq. feet)



Call Chatham - 01634 841243 ■ wardsokent.co.uk

■ Legal advice should be taken to verify fixtures/fittings, planning, alterations and/or lease details

■ Appliances & services are untested, dimensions are approximate and floor plans are not to scale



10435727/20250218/SS/BC

Internal error in letter template 368 - Data type mismatch.

Template timestamp is 25/02/25 09:22:37

Record identifiers:

Property = 10435727

Please copy this detail out of the letter and paste it into a Help Desk call, then take a Diagnostic Snapshot & attach it to the same call.