



**Price**

**£87,500**

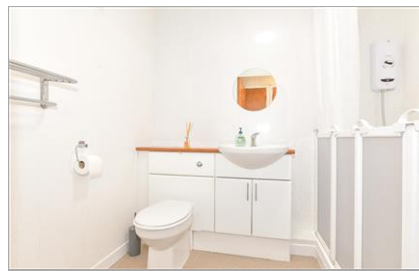
**Leasehold**

1x  1x  1x 

**Kingsdale Court,  
Hopewell Drive,  
Chatham, Kent, ME5**

*Wards*  
Helping you move forwards





## Main features

- First floor retirement flat for over 55s
- Modern kitchen and renovated bathroom
- Private outside space with a custom built shed
- Close to local shops, parks and transportation
- Communal resident's lounge and guest room for visitors

## Accommodation

### FIRST FLOOR

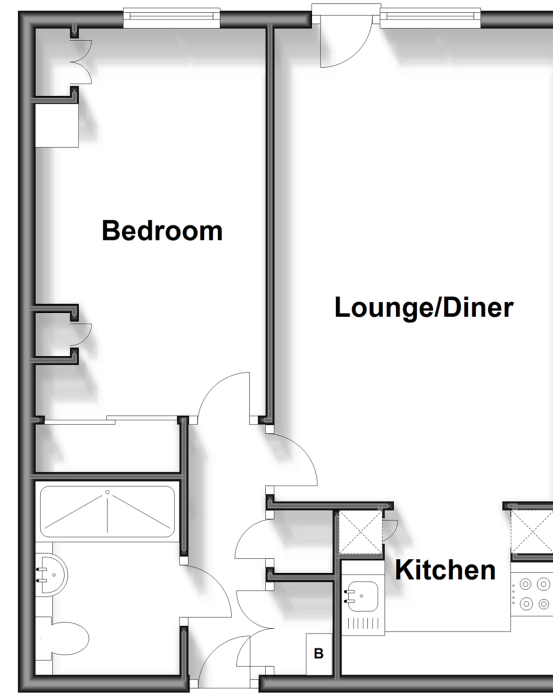
Entrance Hall  
Lounge/Diner: 17'8 x 10'6 (5.39m x 3.20m)  
Kitchen: 7'11 x 6'2 (2.41m x 1.88m)  
Bedroom : 13'0 x 8'9 (3.97m x 2.67m)  
Shower Room

### OUTSIDE

Patio Garden  
Allocated Parking

### First Floor

Approx. 44.6 sq. metres (479.9 sq. feet)



**Call Chatham - 01634 841243 ■ [wardsofkent.co.uk](http://wardsofkent.co.uk)**

■ Legal advice should be taken to verify fixtures/fittings, planning, alterations and/or lease details

■ Appliances & services are untested, dimensions are approximate and floor plans are not to scale



10435687/20241203/BC/RC