



Price
£360,000

Freehold

2x  1x  1x 

**Victor Close, Chatham,
Kent, ME5**

OVER 60?

Secure this property
for up to **59% less!**

Wards
Helping you move forwards



Main features

- **Newly built, spacious semi-detached house finished to high standard**
- **Superb living space and well planned layout with ample storage**
- **Quiet position in a private road with just 4 properties**
- **Brilliant location for a choice local schools and local shops within walking distance**
- **Excellent choice for first time buyers or someone downsizing**

Accommodation

GROUND FLOOR

Entrance Hallway
Lounge: 21'0 x 10'7 (6.41m x 3.23m)
Kitchen/Diner: 14'0 x 8'9 (4.27m x 2.67m)
Downstairs Cloakroom

FIRST FLOOR

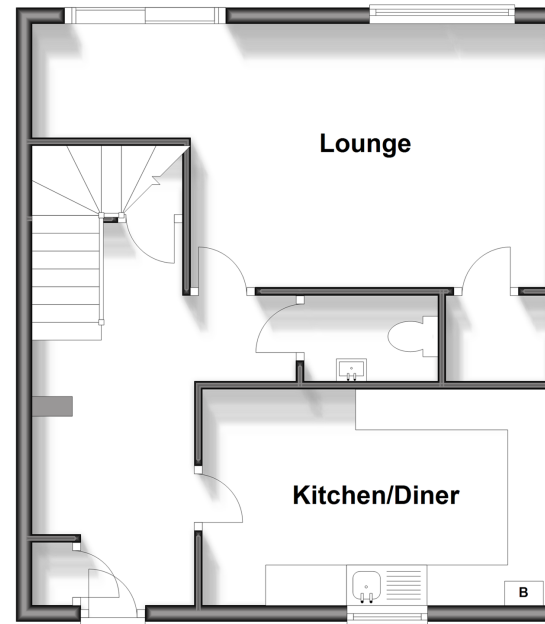
Landing
Bedroom 1: 11'6 x 10'5 (3.51m x 3.18m)
Bedroom 2: 11'10 x 9'1 (3.61m x 2.77m)
Bathroom

OUTSIDE

Front Garden
Rear Garden
Parking Space

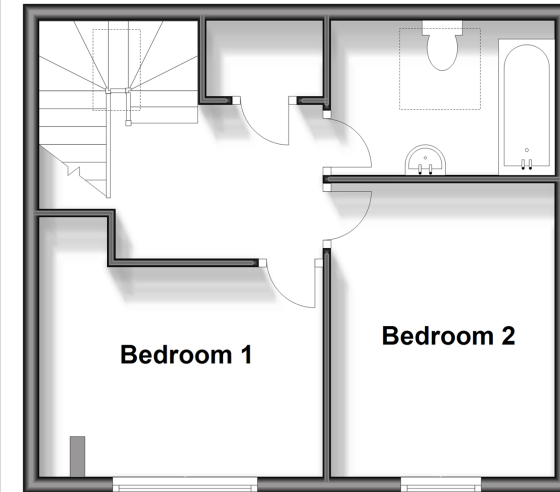
Ground Floor

Approx. 46.0 sq. metres (495.3 sq. feet)



First Floor

Approx. 36.1 sq. metres (388.4 sq. feet)



Call Chatham - 01634 841243 ■ wardsofkent.co.uk

■ Legal advice should be taken to verify fixtures/fittings, planning, alterations and/or lease details
■ Through a Homewise Home For Life Plan people aged 60+ can secure this property for up to 59% less, by purchasing a Lifetime Lease.

■ Appliances & services are untested, dimensions are approximate and floor plans are not to scale



10435350/20241118/AP/BC