



OVER 60?

Secure this property
for up to **59% less!**

Price
£235,000

Freehold

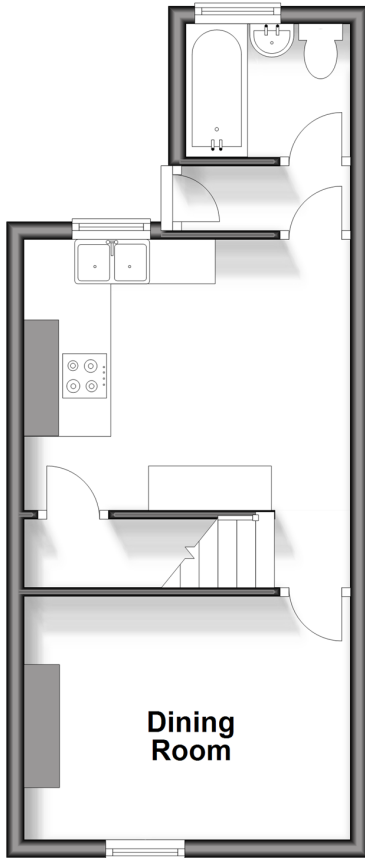
3x  1x  2x 

**Victoria Road, Chatham,
Kent, ME4**

Wards
Helping you move forwards

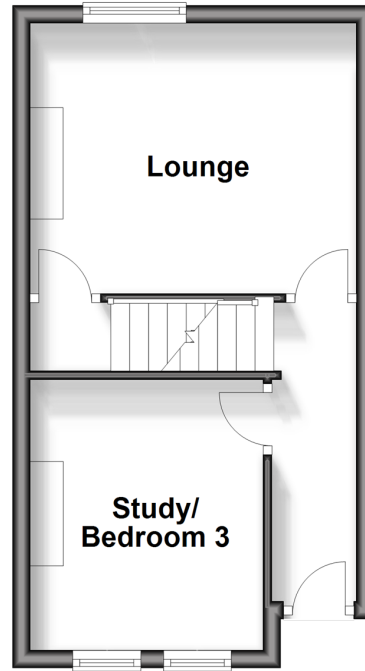
Lower Ground Floor

Approx. 29.6 sq. metres (318.9 sq. feet)



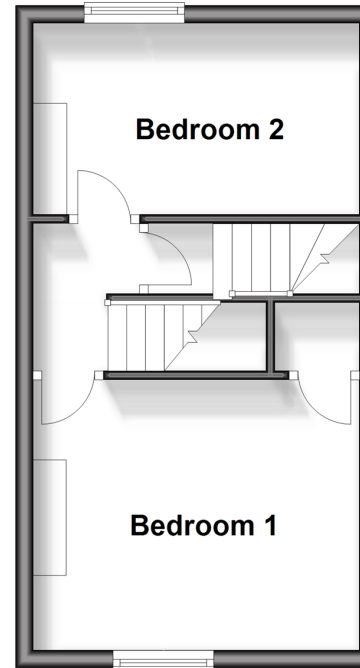
Ground Floor

Approx. 25.6 sq. metres (276.1 sq. feet)



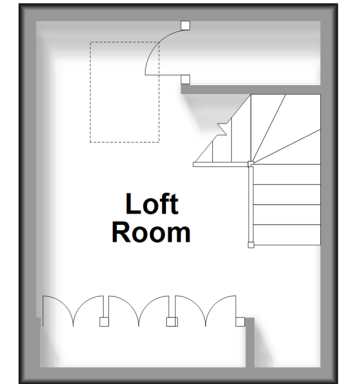
First Floor

Approx. 26.4 sq. metres (283.9 sq. feet)



Second Floor

Approx. 12.6 sq. metres (135.6 sq. feet)



Accommodation

GROUND FLOOR

Entrance Hallway

Study/Bedroom 3: 10'0 x 8'8 (3.05m x 2.64m)

Lounge: 12'5 x 10'1 (3.79m x 3.08m)

LOWER GROUND FLOOR

Dining Room: 11'7 x 8'11 (3.53m x 2.72m)

Kitchen: 12'2 x 9'11 (3.71m x 3.02m)

Rear Lobby

Bathroom

FIRST FLOOR

Landing

Bedroom 1: 12'2 x 9'11 (3.71m x 3.02m)

Bedroom 2: 11'0 x 7'1 (3.36m x 2.16m)

SECOND FLOOR

Loft Room : 10'6 x 10'1 (3.20m x 3.08m)

OUTSIDE

Front Garden

Rear Garden



Main features

- Victorian terraced house arranged over 4 floors
- Versatile layout, with study/bedroom 3 which could be used as living space
- Great condition throughout, ready to move straight in
- Good location for town, local schools and shops
- Excellent for first time buyers/young families or perhaps a buy to let



Nearest Schools

Primary Schools: All Saints C of E Primary, Chatham 0.5 miles, Luton Junior School 0.7 miles, Phoenix Junior Academy 0.8 miles

Secondary Schools: Victory Academy 0.5 miles, Fort Pitt



Transport Information

Train Stations: Chatham 1.8 miles, Rochester 1.9 miles, Gillingham 2.7 miles



Address

Victoria Road, Chatham, Kent, ME4



Directions

For directions to this property please contact us.



Wards
Helping you move forwards

Call Chatham Branch 01634 841243 ■ wardsofkent.co.uk



- Legal advice should be taken to verify fixtures/fittings, planning, alterations and/or lease details
- Appliances & services are untested, dimensions are approximate and floor plans are not to scale
- Through a Homewise Home For Life Plan people aged 60+ can secure this property for up to 59% less, by purchasing a Lifetime Lease.



10435656/20241029/BC/BC