



Price
£550,000

Freehold

4x  2x  2x 

**Sallow Close, St Marys
Island, Chatham, Kent,
ME4**

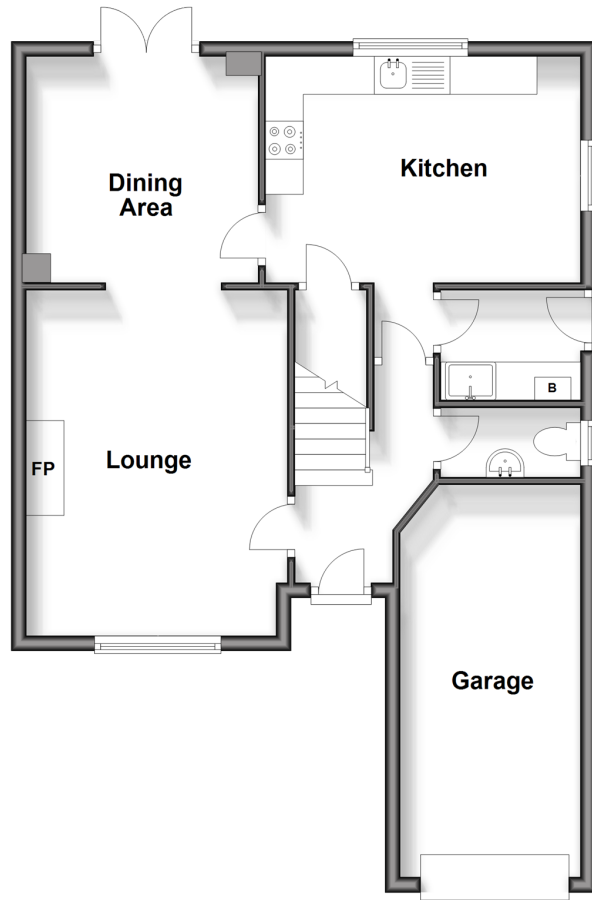
OVER 60?

Secure this property
for up to **59% less!**

Wards
Helping you move forwards

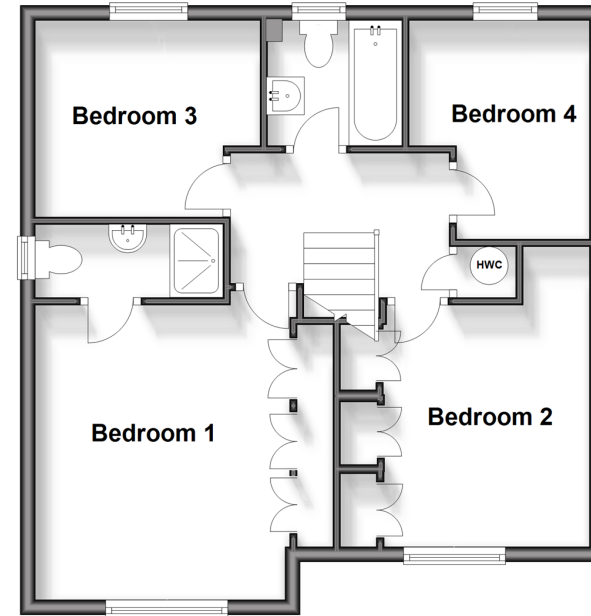
Ground Floor

Approx. 62.4 sq. metres (672.1 sq. feet)



First Floor

Approx. 53.2 sq. metres (572.6 sq. feet)



Accommodation

GROUND FLOOR

Entrance Hallway

Lounge: 14'11 x 11'2 (4.55m x 3.41m)

Dining Area: 10'0 x 9'9 (3.05m x 2.97m)

Kitchen: 13'7 x 9'8 (4.14m x 2.95m)

Utility Room: 5'11 x 4'10 (1.80m x 1.47m)

Cloakroom

FIRST FLOOR

Landing

Bedroom 1: 12'5 x 10'7 (3.79m x 3.23m)

En-suite Shower Room

Bedroom 2: 13'2 x 9'0 (4.02m x 2.75m)

Bedroom 3: 9'8 x 9'2 (2.95m x 2.80m)

Bedroom 4: 9'6 x 7'10 (2.90m x 2.39m)

Bathroom

OUTSIDE

Front Garden

Driveway

Garage

Rear Garden



Main features

- Detached house in a sought after location on popular St Marys Island
- Set on one of the larger plots on development with great sized garden
- Good condition throughout
- Excellent living space with separate lounge and dining area
- Perfect family home, with utility, downstairs cloakroom and en-suite shower room



Nearest Schools

Primary Schools: St Mary's Island C of E (Aided) Primary 0.3 miles, Burnt Oak Primary 0.8 miles, Skinner Street Primary 1.0 miles

Secondary Schools: The Hundred of Hoo Comprehensive



Transport Information

Train Stations: Gillingham 1.2 miles, Chatham 1.9 miles, Rochester 1.9 miles



Address

Sallow Close, St Marys Island, Chatham, Kent, ME4



Directions

For directions to this property please contact us.



Call Chatham Branch 01634 841243 ■ wardsofkent.co.uk



- Legal advice should be taken to verify fixtures/fittings, planning, alterations and/or lease details
- Appliances & services are untested, dimensions are approximate and floor plans are not to scale
- Through a Homewise Home For Life Plan people aged 60+ can secure this property for up to 59% less, by purchasing a Lifetime Lease.



10431682/20241109/AP/BC