



Price
£155,000

Leasehold

1x  1x  1x 

**Fort Pitt Street,
Chatham, Kent, ME4**

OVER 60?

Secure this property
for up to **59% less!**

Wards
Helping you move forwards



Main features

- Ground floor flat with a garden
- Recently renovated kitchen
- Plenty of parking surrounding the property
- Perfect for first time buyers or someone needing somewhere smaller to reside
- Ideal location as train station and high street are in walking distance

Accommodation

GROUND FLOOR

Entrance Hall

Lounge/Diner: 19'5 x 9'8 (5.92m x 2.95m)

Kitchen: 9'2 x 6'7 (2.80m x 2.01m)

Shower Room : 7'4 x 6'5 (2.24m x 1.96m)

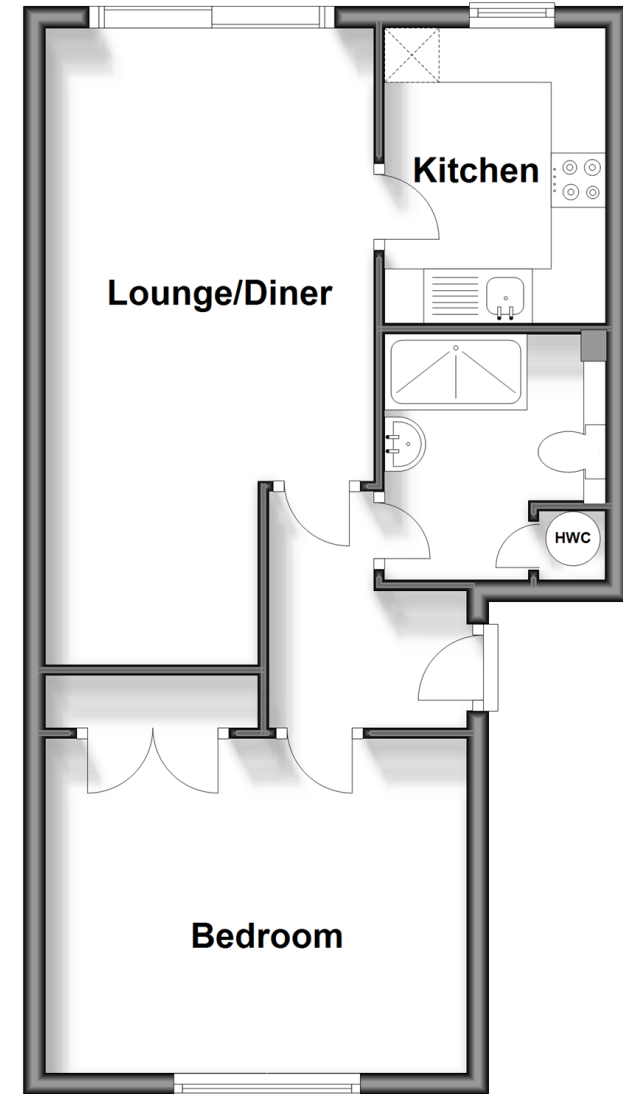
Bedroom : 12'9 x 10'1 (3.89m x 3.08m)

OUTSIDE

Rear Garden

Ground Floor

Approx. 43.9 sq. metres (472.5 sq. feet)



Call Chatham - 01634 841243 ■ wardsof Kent.co.uk

- Legal advice should be taken to verify fixtures/fittings, planning, alterations and/or lease details
- Appliances & services are untested, dimensions are approximate and floor plans are not to scale
- Through a Homewise Home For Life Plan people aged 60+ can secure this property for up to 59% less, by purchasing a Lifetime Lease.



10428700/20241026/AP/RC