



Price
£200,000

Freehold

3x  1x  2x 

**Portland Street,
Chatham, Kent, ME4**

OVER 60?

Secure this property
for up to **59% less!**

Wards
Helping you move forwards



Main features

- Terraced house in the heart of Chatham
- Ready to move into
- Separate living, dining and kitchen
- Perfect for a first time buyer or an investor
- Ideal location due to being in close proximity local schools, train station and town centre

Accommodation

SPLIT LEVEL GROUND FLOOR

Lounge: 12'2 x 10'1 (3.71m x 3.08m)

Dining Room: 12'4 x 10'0 (3.76m x 3.05m)

Kitchen: 10'3 x 6'11 (3.13m x 2.11m)

Bathroom: 6'9 x 5'7 (2.06m x 1.70m)

SPLIT LEVEL FIRST FLOOR

Landing

Bedroom 1: 10'0 x 9'10 (3.05m x 3.00m)

Bedroom 2: 11'3 x 10'2 (3.43m x 3.10m)

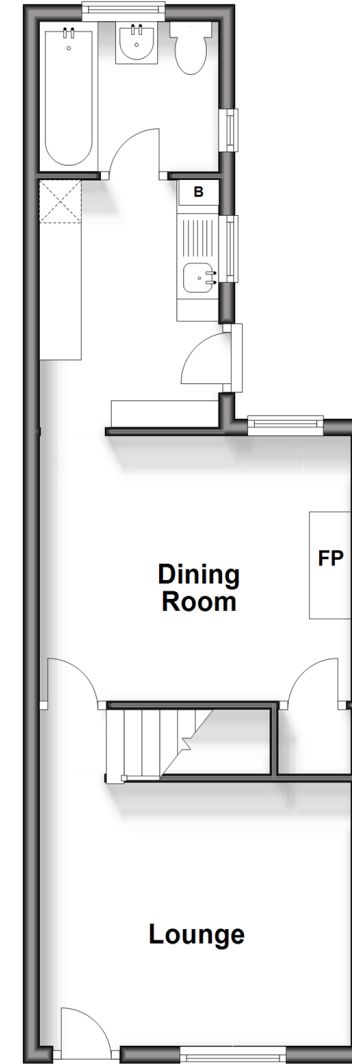
Bedroom 3: 9'6 x 6'7 (2.90m x 2.01m)

OUTSIDE

Rear Garden

Split Level Ground Floor

Approx. 37.0 sq. metres (398.4 sq. feet)



Split Level First Floor

Approx. 33.0 sq. metres (355.7 sq. feet)



Call Chatham - 01634 841243 ■ wardsofkent.co.uk

- Legal advice should be taken to verify fixtures/fittings, planning, alterations and/or lease details
- Appliances & services are untested, dimensions are approximate and floor plans are not to scale
- Through a Homewise Home For Life Plan people aged 60+ can secure this property for up to 59% less, by purchasing a Lifetime Lease.



10435675/20250315/AP/RC