



Price
£225,000

Freehold

2x  1x  2x 

Upper Luton Road,
Chatham, Kent, ME5

OVER 60?

Secure this property
for up to **59% less!**

Wards
Helping you move forwards



Main features

- End of terrace house immaculately presented
- Low maintenance garden that wraps around the property
- Recently renovated
- Perfect home for first time buyers or investors looking to add to their portfolio
- Great location due to close proximity to local schools, amenities and transport links

Accommodation

SPLIT LEVEL GROUND FLOOR

- Lounge: 11'9 x 11'4 (3.58m x 3.46m)
- Dining Room: 11'10 x 10'1 (3.61m x 3.08m)
- Kitchen: 7'4 x 6'9 (2.24m x 2.06m)
- Bathroom: 7'2 x 5'11 (2.19m x 1.80m)

FIRST FLOOR

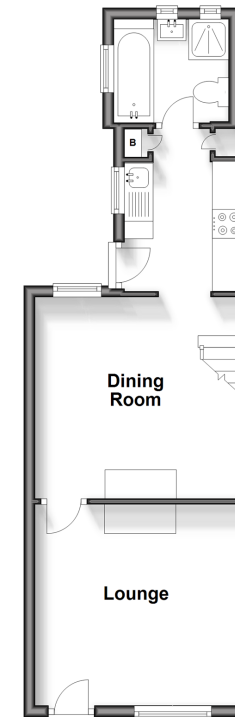
- Bedroom 1: 11'11 x 11'4 (3.63m x 3.46m)
- Bedroom 2: 10'4 x 9'5 (3.15m x 2.87m)

OUTSIDE

Rear Garden

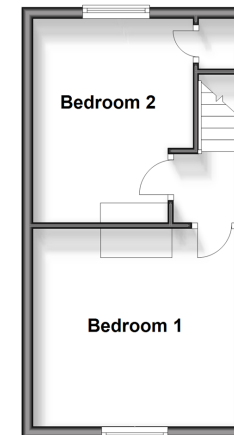
Split Level Ground Floor

Approx. 35.1 sq. metres (378.2 sq. feet)



First Floor

Approx. 25.4 sq. metres (273.9 sq. feet)



Call Chatham - 01634 841243 ■ wardsofkent.co.uk

■ Legal advice should be taken to verify fixtures/fittings, planning, alterations and/or lease details
 ■ Through a Homewise Home For Life Plan people aged 60+ can secure this property for up to 59% less, by purchasing a Lifetime Lease.

■ Appliances & services are untested, dimensions are approximate and floor plans are not to scale



10435618/20241022/RC/RC