



Price
£265,000

Freehold

2x  1x  1x 

**Street End Road,
Chatham, Kent, ME5**

OVER 60?

Secure this property
for up to **59% less!**

Wards
Helping you move forwards



Main features

- Semi-detached house in a popular residential location
- Ready to move in, but with room to improve and make your own
- Great sized garage to rear is perfect for a car or motorbike enthusiast
- Brilliant location for a choice local schools and local shops within walking distance
- Excellent choice for first time buyers

Accommodation

GROUND FLOOR

Entrance Hallway

Lounge: 13'3 x 11'5 (4.04m x 3.48m)

Dining Area: 8'11 x 7'6 (2.72m x 2.29m)

Kitchen: 8'7 x 6'9 (2.62m x 2.06m)

FIRST FLOOR

Landing

Bedroom 1: 13'9 x 11'6 (4.19m x 3.51m)

Bedroom 2: 8'5 x 8'3 (2.57m x 2.52m)

Shower Room

OUTSIDE

Front Garden

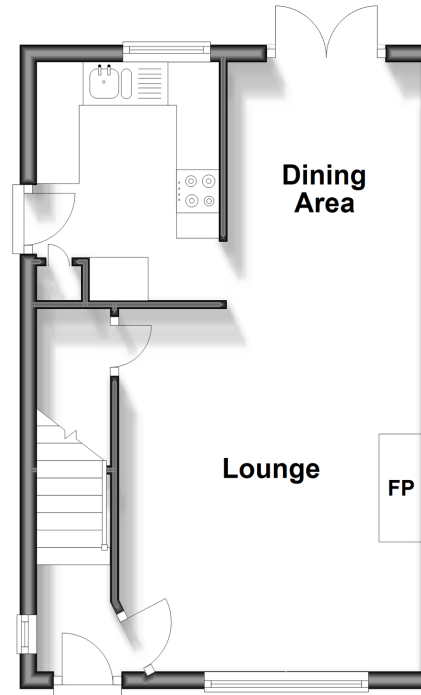
Rear Garden

Driveway to Rear

Garage to Rear: 17'4 x 8'6 (5.29m x 2.59m)

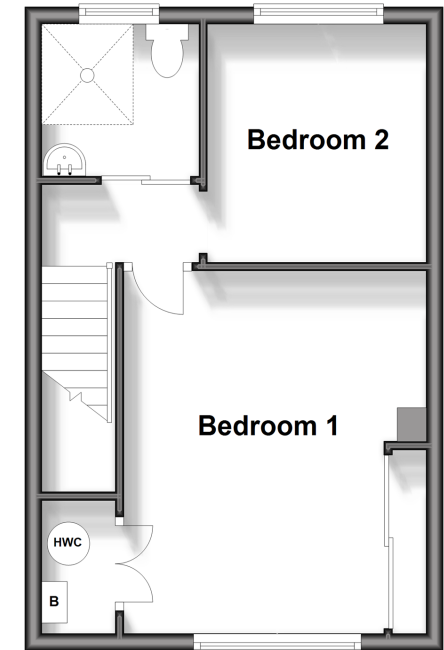
Ground Floor

Approx. 32.0 sq. metres (344.1 sq. feet)



First Floor

Approx. 32.0 sq. metres (344.1 sq. feet)



Call Chatham - 01634 841243 ■ wardsofkent.co.uk

■ Legal advice should be taken to verify fixtures/fittings, planning, alterations and/or lease details
 ■ Through a Homewise Home For Life Plan people aged 60+ can secure this property for up to 59% less, by purchasing a Lifetime Lease.

■ Appliances & services are untested, dimensions are approximate and floor plans are not to scale



10435652/20241012/AP/BC