



OVER 60?

Secure this property
for up to **59% less!**

Price

£360,000

Freehold

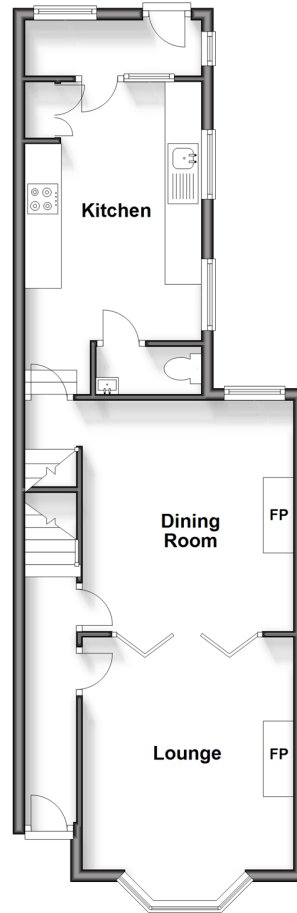
4x  1x  2x 

**Boundary Road,
Chatham, Kent, ME4**

Wards
Helping you move forwards

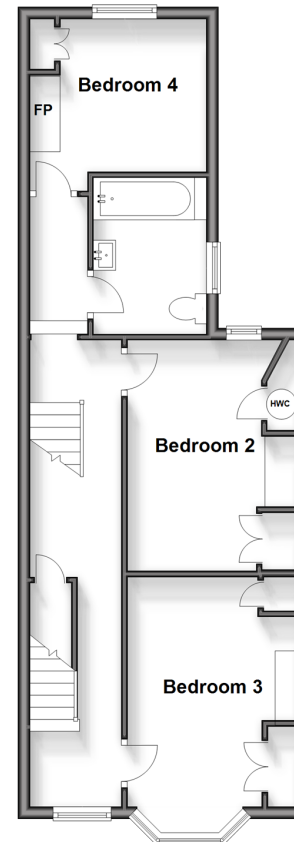
Split Level Ground Floor

Approx. 52.6 sq. metres (566.5 sq. feet)



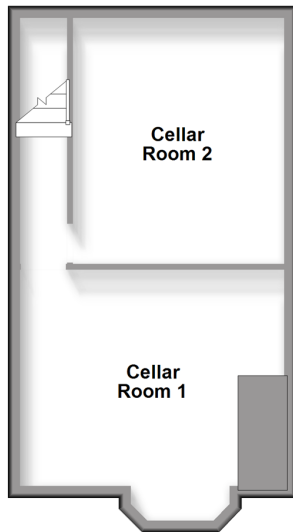
Split Level First Floor

Approx. 50.2 sq. metres (540.8 sq. feet)



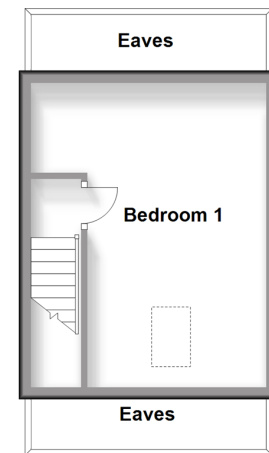
Basement

Approx. 34.9 sq. metres (375.4 sq. feet)



Second Floor

Approx. 19.6 sq. metres (211.0 sq. feet)



Accommodation

SPLIT LEVEL GROUND FLOOR

Entrance Hallway

Lounge: 12'3 x 11'2 (3.74m x 3.41m)

Dining Room: 12'7 x 12'6 (3.84m x 3.81m)

Kitchen: 14'1 x 9'5 (4.30m x 2.87m)

Utility Room

Cloakroom

BASEMENT

Cellar Room 1

Cellar Room 2

SPLIT LEVEL FIRST FLOOR

Landing

Bedroom 2: 14'9 x 9'2 (4.50m x 2.80m)

Bedroom 3: 12'7 x 8'1 (3.84m x 2.47m)

Bedroom 4: 9'6 x 8'3 (2.90m x 2.52m)

Bathroom

SECOND FLOOR

Landing

Bedroom 1: 13'3 x 9'9 (4.04m x 2.97m)

OUTSIDE

Front Garden

Rear Garden



Main features

- Edwardian terraced house with loft extension and useable basement
- Brilliant sized living space and kitchen with downstairs cloakroom and upstairs bathroom
- Attractive mature secluded rear garden
- Perfect first time buy for a young family and/or commuters
- A short walk to popular local schools and Chatham Railway Station



Nearest Schools

Primary Schools: St Michael's RC Primary 0.5 miles, Balfour Junior School 0.8 miles, Brompton-Westbrook Primary 1.0 miles

Secondary Schools: St John Fisher Catholic



Transport Information

Train Stations: Chatham 0.4 miles, Rochester 1.3 miles, Strood 1.9 miles



Address

Boundary Road, Chatham, Kent, ME4



Directions

For directions to this property please contact us.



Wards
Helping you move forwards

Call Chatham Branch 01634 841243 ■ wardsofkent.co.uk



- Legal advice should be taken to verify fixtures/fittings, planning, alterations and/or lease details
- Through a Homewise Home For Life Plan people aged 60+ can secure this property for up to 59% less, by purchasing a Lifetime Lease.
- Appliances & services are untested, dimensions are approximate and floor plans are not to scale



10421184/20250125/AP/BC