



Price
£475,000

Freehold

4x  3x  1x 

**Henrietta Chase, St.
Mary's Island, Chatham,
Kent, ME4**

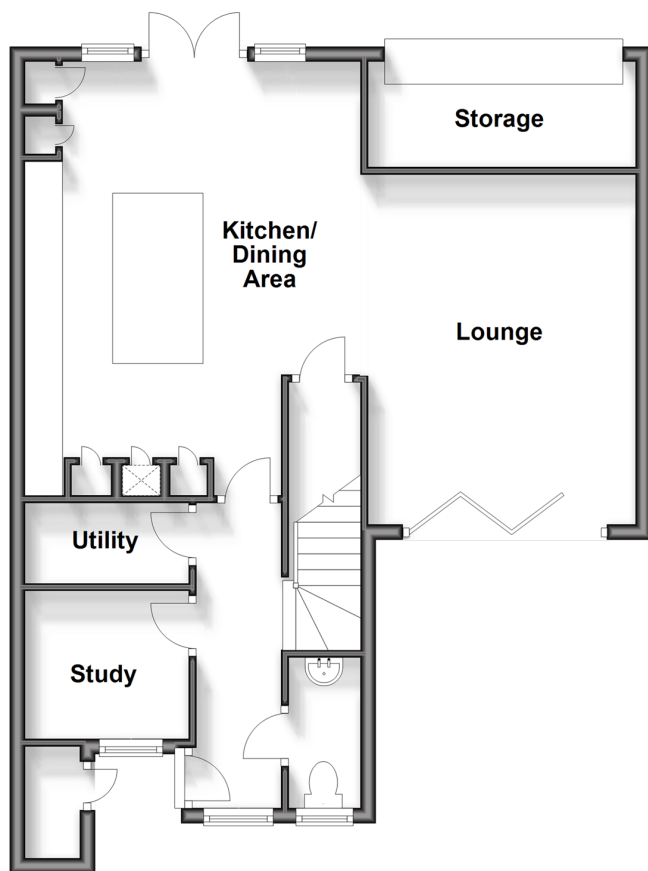
OVER 60?

Secure this property
for up to **59% less!**

Wards
Helping you move forwards

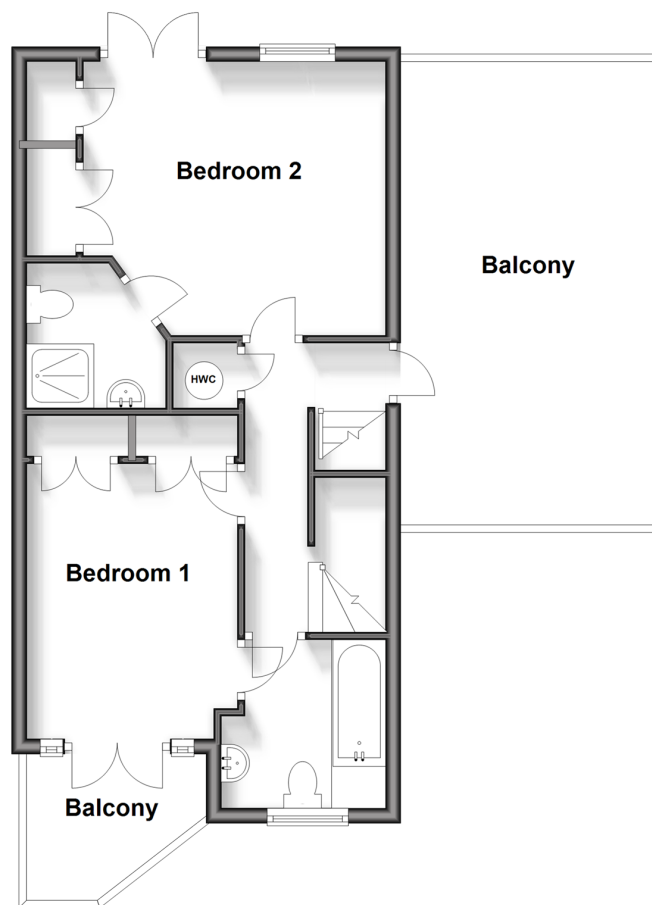
Ground Floor

Approx. 65.6 sq. metres (706.0 sq. feet)



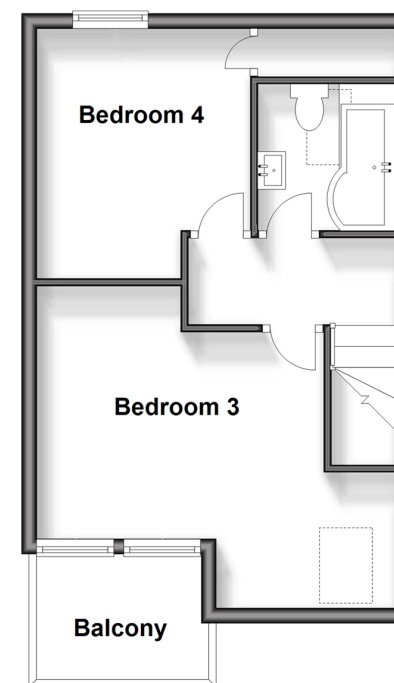
First Floor

Approx. 44.8 sq. metres (482.2 sq. feet)



Second Floor

Approx. 34.4 sq. metres (370.6 sq. feet)



Accommodation

GROUND FLOOR

Entrance Hallway
 Kitchen/Diner: 18'4 x 15'5 (5.59m x 4.70m)
 Lounge: 15'8 x 8'4 (4.78m x 2.54m)
 Study: 7'3 x 6'2 (2.21m x 1.88m)
 Cloakroom
 Utility

FIRST FLOOR

Landing
 Access to Roof Terrace
 Bedroom 1: 12'8 x 9'0 (3.86m x 2.75m)
 Jack & Jill Bathroom
 Balcony
 Bedroom 2: 13'5 x 9'11 (4.09m x 3.02m)
 En-suite Shower Room

SECOND FLOOR

Landing
 Bedroom 3: 12'3 x 9'2 (3.74m x 2.80m)
 Balcony
 Bedroom 4: 9'1 x 8'10 (2.77m x 2.69m)
 Bathroom

OUTSIDE

Front Garden
 Rear Garden
 Parking for 2 vehicles



Main features

- Beautifully presented semi-detached house
- Large kitchen/diner and living space for entertaining
- Double bedrooms, 2 en-suites and additional study downstairs
- Excellent outside space, with garden, separate patio area, 2 balconies and roof terrace
- Sought after location on St Mary's Island



Nearest Schools

Primary Schools: St Mary's Island C of E (Aided) Primary 0.1 miles, Burnt Oak Primary School 1.2 miles
Secondary Schools: Rivermead School 1.4 miles, Fort Pitt Grammar School For Girls 2.5 miles, Holcombe Grammar School 3.4 miles



Transport Information

Train Stations: Chatham 2.3 miles, Gillingham 2.3 miles, Rochester 3 miles



Address

Henrietta Chase, St. Mary's Island, Chatham, Kent, ME4



Directions

For directions to this property please contact us.



Wards
Helping you move forwards

Call Chatham Branch 01634 841243 ■ wardsofkent.co.uk



■ Legal advice should be taken to verify fixtures/fittings, planning, alterations and/or lease details ■ Appliances & services are untested, dimensions are approximate and floor plans are not to scale
■ Through a Homewise Home For Life Plan people aged 60+ can secure this property for up to 59% less, by purchasing a Lifetime Lease.



10428528/20241007/BC/BC