

OVER 60?

Secure this property
for up to **59% less!**



Price

£650,000

Freehold

4x  2x  3x 

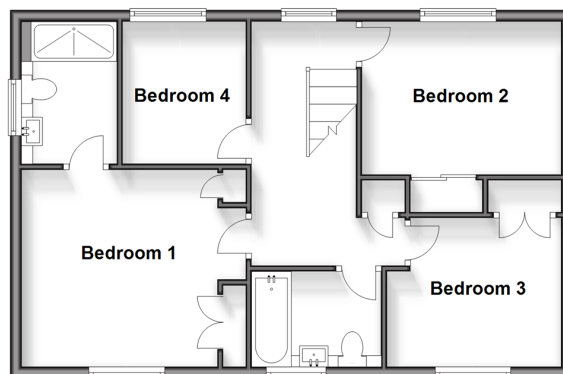
The Pinnacles, St Mary's Island, Chatham,
Kent, ME4

Wards
Helping you move forwards

Ground Floor
Approx. 120.9 sq. metres (1301.4 sq. feet)



First Floor
Approx. 57.8 sq. metres (622.7 sq. feet)



Accommodation

GROUND FLOOR

Entrance Hall

Lounge: 11'8 x 11'7 (3.56m x 3.53m)

Dining Room: 11'8 x 11'3 (3.56m x 3.43m)

Kitchen: 11'3 x 7'1 (3.43m x 2.16m)

Breakfast Area: 9'10 x 8'3 (3.00m x 2.52m)

Sitting Area: 11'3 x 9'0 (3.43m x 2.75m)

Utility Room

Downstairs Cloakroom

FIRST FLOOR

Landing

Bedroom 1: 13'1 x 11'5 (3.99m x 3.48m)

En-suite Shower Room

Bedroom 2: 10'5 x 8'6 (3.18m x 2.59m)

Bedroom 3: 11'9 x 9'0 (3.58m x 2.75m)

Bedroom 4: 8'2 x 7'2 (2.49m x 2.19m)

Bathroom

OUTSIDE

Front Garden

Rear Garden

OUTBUILDING

Double Garage

Room 1 (Workshop)

Room 2 (Games/Family Room)



Main features

- Substantial, double fronted detached executive house
- Versatile separate living spaces and excellent sized bedrooms
- Large driveway and extended garage and outbuilding with games room
- Superb choice for a large or multi generational family
- Sought after location on St Mary's Island



Nearest Schools

Primary Schools: St Mary's Island C of E (Aided) Primary 0.5 miles, Burnt Oak Primary 1.6 miles
Secondary Schools: St John Fisher 2.2 miles, Brompton Academy 2.4 miles, Victory Academy 2.5 miles



Transport Information

Train Stations: Chatham 2.2 miles, Gillingham 2.3 miles, Rochester 2.9 miles



Address

The Pinnacles, St Mary's Island, Chatham, Kent, ME4



Directions

For directions to this property please contact us.



Wards
Helping you move forwards

Call Chatham Branch 01634 841243 ■ wardsofkent.co.uk



■ Legal advice should be taken to verify fixtures/fittings, planning, alterations and/or lease details ■ Appliances & services are untested, dimensions are approximate and floor plans are not to scale
■ Through a Homewise Home For Life Plan people aged 60+ can secure this property for up to 59% less, by purchasing a Lifetime Lease.



10435606/20240808/BC/BC