



**Price**

**£900,000**

**Freehold**

4x  3x  4x 

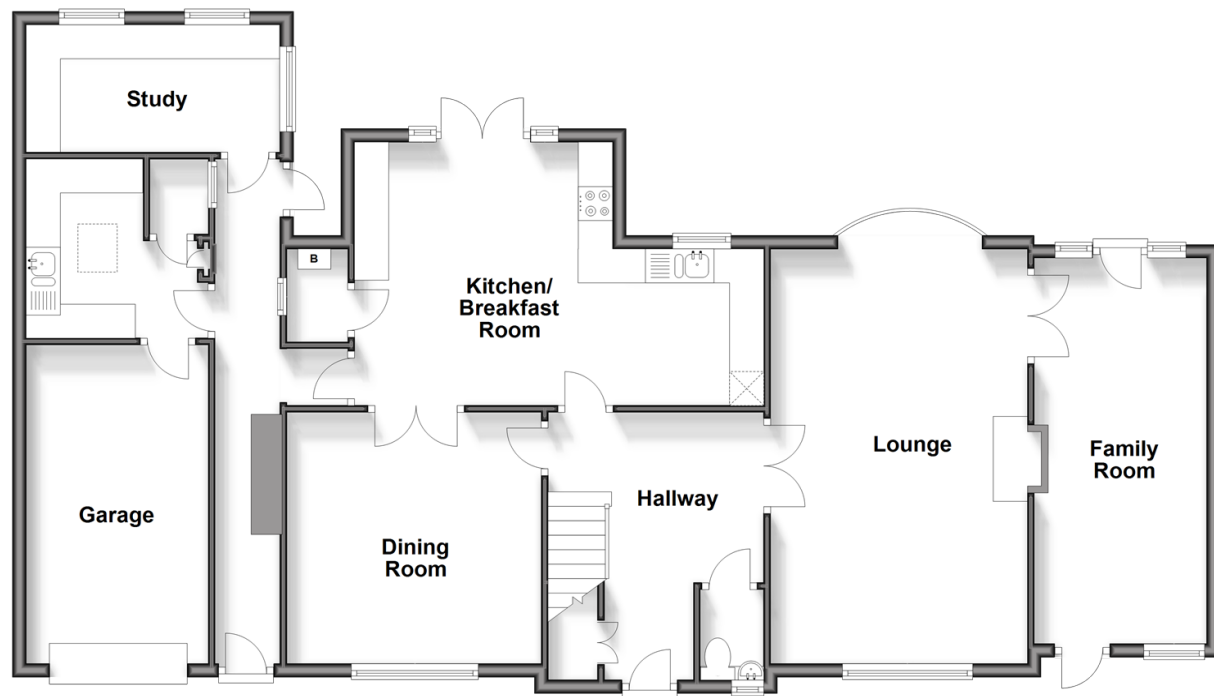
Maidstone Road, Chatham, Kent, ME4

*Wards*  
Helping you move forwards



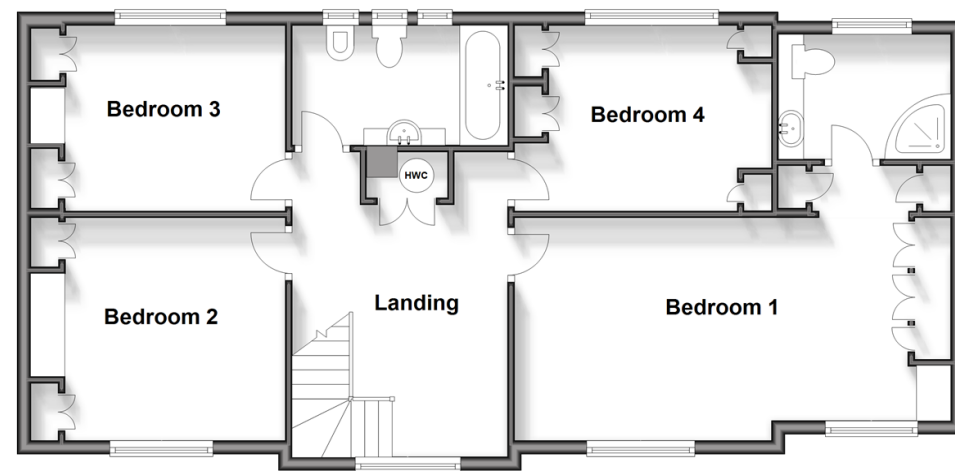
### Split Level Ground Floor

Approx. 123.2 sq. metres (1326.2 sq. feet)



### First Floor

Approx. 81.6 sq. metres (878.3 sq. feet)



## Accommodation

### GROUND FLOOR

Entrance Hall

Lounge: 19'10 x 12'2 (6.05m x 3.71m)

Family Room : 18'7 x 8'2 (5.67m x 2.49m)

Dining Room: 12'1 x 11'9 (3.69m x 3.58m)

Cloakroom

Kitchen / Breakfast Room: 19'7 x 12'7 (5.97m x 3.84m)

Utility Room: 8'8 x 8'8 (2.64m x 2.64m)

Study: 12'2 x 6'8 (3.71m x 2.03m)

### FIRST FLOOR

Landing

Bedroom 1: 21'5 x 10'10 (6.53m x 3.30m)

En-suite Shower Room: 8'8 x 5'8 (2.64m x 1.73m)

Bedroom 2: 12'2 x 10'9 (3.71m x 3.28m)

Bedroom 3: 12'2 x 8'10 (3.71m x 2.69m)

Bedroom 4: 12'2 x 8'9 (3.71m x 2.67m)

Bathroom: 10'4 x 5'9 (3.15m x 1.75m)

### OUTSIDE

Front Garden

Driveway

Garage

Rear Garden



## Main features

- Substantial detached house on a prestigious road
- An excellent executive family home for those who love to entertain
- Generous separate living, dining and family spaces
- Large driveway for multiple vehicles and garage
- Highly sought after location, excellent for popular schools, travel links and amenities



### Nearest Schools

Primary Schools: Balfour Junior School 0.4 miles, Wayfield Community Primary and Nursery Unit 0.5 miles, Warren Wood Community Primary and Language Unit 0.5 miles

Secondary Schools: Chatham South School 0.1 miles,



### Transport Information

Train Stations: Chatham 1.1 miles, Rochester 1.5 miles, Gillingham 2.1 miles



### Address

Maidstone Road, Chatham, Kent, ME4



### Directions

For directions to this property please contact us.





Call Chatham Branch 01634 841243 ■ [wardsofkent.co.uk](http://wardsofkent.co.uk)



■ Legal advice should be taken to verify fixtures/fittings, planning, alterations and/or lease details ■ Appliances & services are untested, dimensions are approximate and floor plans are not to scale



10434312/20240729/BC/BC