



Price
£260,000

Freehold

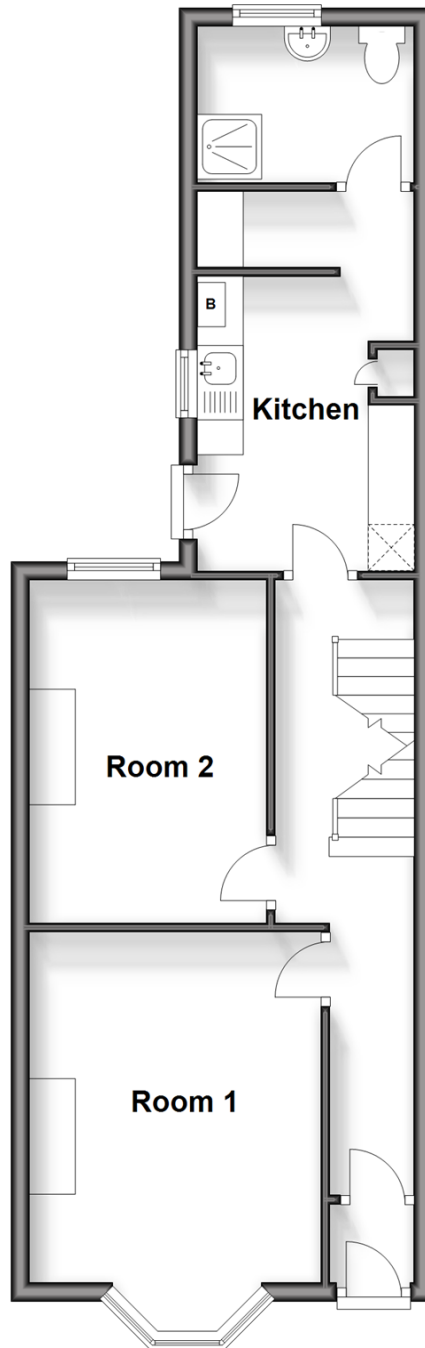
5x  1x  1x 

**Luton Road, Chatham,
Kent, ME4**

Wards
Helping you move forwards

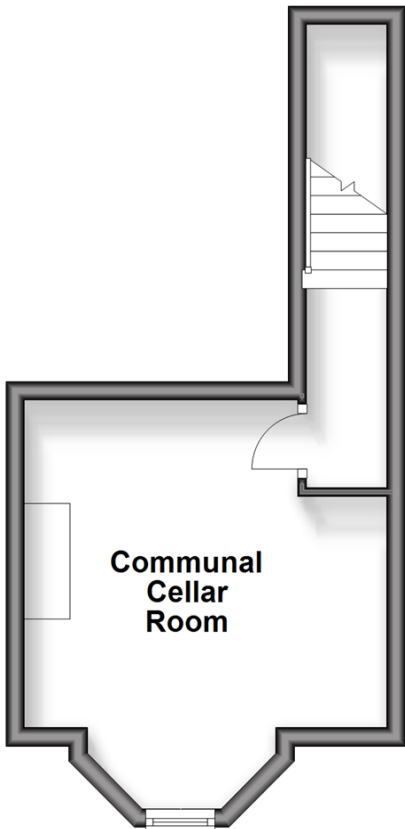
Split Level Ground Floor

Approx. 46.1 sq. metres (496.7 sq. feet)



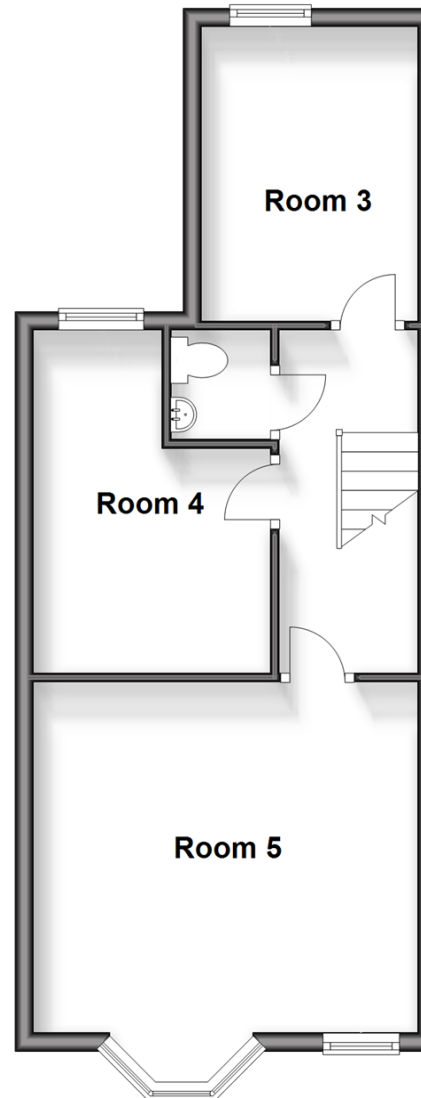
Lower Ground Floor

Approx. 19.0 sq. metres (204.5 sq. feet)



First Floor

Approx. 39.7 sq. metres (427.8 sq. feet)



Accommodation

SPLIT LEVEL GROUND FLOOR

Entrance Porch

Hallway

Room 1: 12'4 x 10'6 (3.76m x 3.20m)

Room 2: 12'2 x 8'4 (3.71m x 2.54m)

Kitchen: 10'6 x 7'1 (3.20m x 2.16m)

Rear Lobby

Shower Room

LOWER GROUND FLOOR

Communal Cellar Room: 13'9 x 12'11 (4.19m x 3.94m)

FIRST FLOOR

Landing

Room 3: 10'5 x 7'10 (3.18m x 2.39m)

Room 4: 12'5 x 8'4 (3.79m x 2.54m)

Room 5: 13'11 x 12'6 (4.24m x 3.81m)

Cloakroom

OUTSIDE

Rear Garden



Main features

- Victoria 5 bedroom terraced house investment opportunity
- HMO investment with 5 rooms and tenants in situ
- Communal cellar room, kitchen, bathroom and garden
- In excellent condition, 'turn key' ready
- Great location for town centre and Medway hospital



Nearest Schools

Primary Schools: All Saints C of E Primary, Chatham 0.1 miles, New Road School and Nursery Unit 0.3 miles, Luton Junior School 0.4 miles

Secondary Schools: Brompton Academy 0.4 miles,



Transport Information

Train Stations: Chatham 0.8 miles, Gillingham 0.9 miles, Rochester 1.3 miles



Address

Luton Road, Chatham, Kent, ME4



Directions

For directions to this property please contact us.



Call Chatham Branch 01634 841243 ■ wardsofkent.co.uk



■ Legal advice should be taken to verify fixtures/fittings, planning, alterations and/or lease details ■ Appliances & services are untested, dimensions are approximate and floor plans are not to scale



10433600/20241207/AP/BC