



Price
£275,000

Freehold

3x  1x  2x 

**Ironside Close,
Chatham, Kent, ME5**

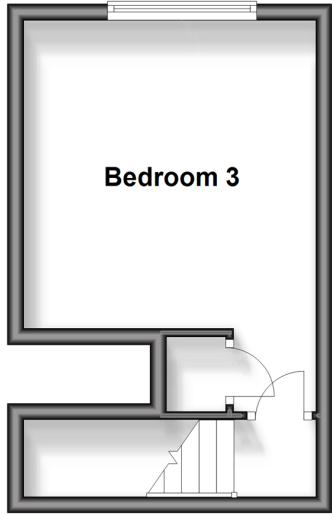
OVER 60?

Secure this property
for up to **59% less!**

Wards
Helping you move forwards

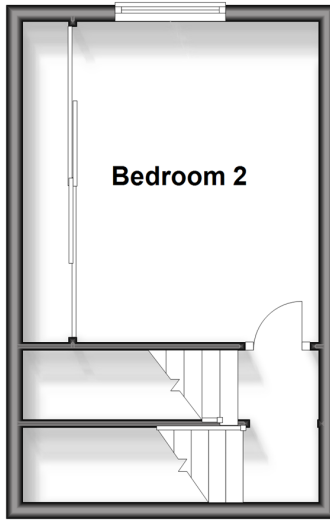
Fifth Floor

Approx. 19.2 sq. metres (207.1 sq. feet)



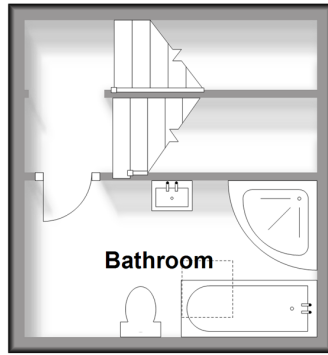
Third Floor

Approx. 21.7 sq. metres (233.7 sq. feet)



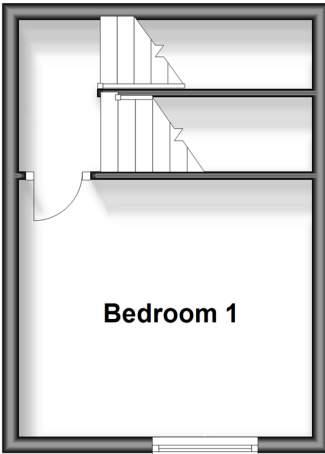
Fourth Floor

Approx. 14.1 sq. metres (151.9 sq. feet)



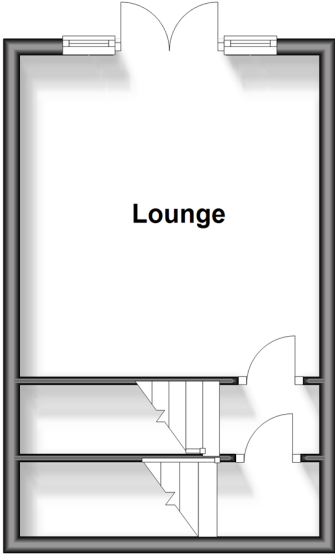
Second Floor

Approx. 18.7 sq. metres (201.2 sq. feet)



First Floor

Approx. 22.1 sq. metres (237.5 sq. feet)



Ground Floor

Approx. 19.7 sq. metres (212.5 sq. feet)



Accommodation

GROUND FLOOR

Kitchen/Diner: 12'1 x 10'3 (3.69m x 3.13m)

Cloakroom: 6'4 x 2'9 (1.93m x 0.84m)

FIRST FLOOR

Lounge: 13'7 x 12'2 (4.14m x 3.71m)

SECOND FLOOR

Bedroom 3: 12'2 x 10'4 (3.71m x 3.15m)

THIRD FLOOR

Bedroom 2: 12'5 x 10'4 (3.79m x 3.15m)

FOURTH FLOOR

Bathroom: 12'2 x 6'3 (3.71m x 1.91m)

FIFTH FLOOR

Bedroom 1: 12'3 x 12'0 (3.74m x 3.66m)

OUTSIDE

Driveway
Rear Garden



Main features

- Modern 3 bedroom town house
- Cloakroom and upstairs bathroom
- Allocated parking space and plenty of visitor parking to front & rear
- Perfect for first time buyers and young families needing more room
- Popular location as close to town centre, good schools and local amenities



Nearest Schools

Primary Schools: Wayfield Community Primary and Nursery Unit 0.4 miles, All Saints C of E Primary, Chatham 1.0 miles, New Road School and Nursery Unit 1.0 miles

Secondary Schools: Walderslade Girls' School 1.1 miles,



Transport Information

Train Stations: Chatham 2.5 miles, Rochester 3.2 miles, Gillingham 3.3 miles



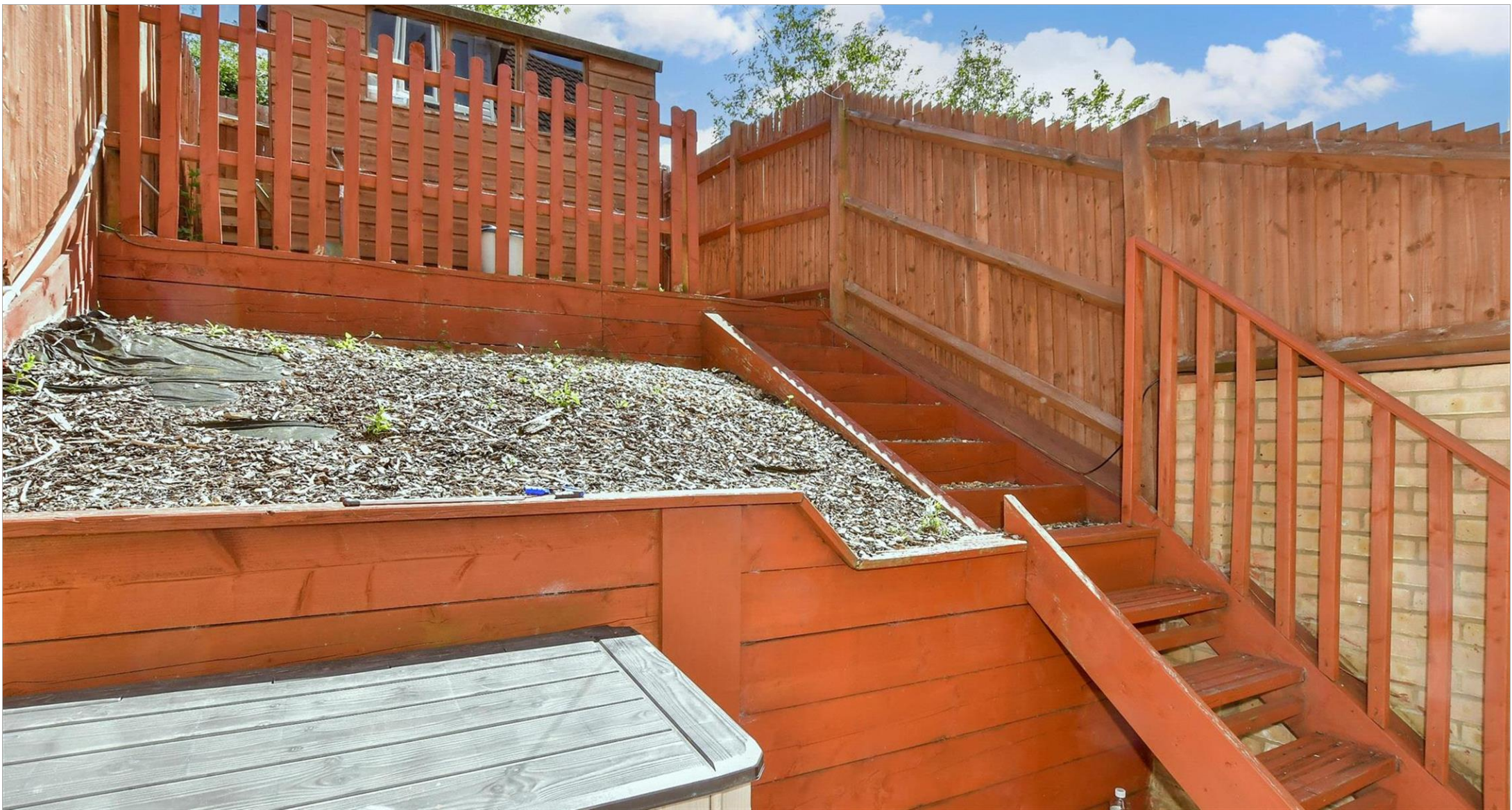
Address

Ironside Close, Chatham, Kent, ME5



Directions

For directions to this property please contact us.



Call Chatham Branch 01634 841243 ■ wardsofkent.co.uk



- Legal advice should be taken to verify fixtures/fittings, planning, alterations and/or lease details
- Appliances & services are untested, dimensions are approximate and floor plans are not to scale
- Through a Homewise Home For Life Plan people aged 60+ can secure this property for up to 59% less, by purchasing a Lifetime Lease.



10435571/20240903/JC/RC