



**Price**

**£70,000**

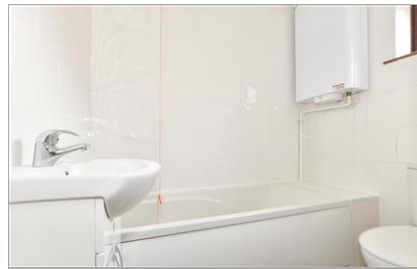
**Leasehold**

1x  1x  1x 

**Kingsdale Court,  
Hopewell Drive,  
Chatham, Kent, ME5**

*Wards*  
Helping you move forwards





## Main features

- **1st floor retirement flat for the over 55s**
- **Excellent condition, refurbished throughout**
- **Popular development with lift access and on-site warden**
- **Resident's parking available, communal gardens, resident's lounge and laundrette**
- **Great location, close to bus routes with access to Chatham and Walderslade**

## Accommodation

### FIRST FLOOR

Lounge: 18'5 x 9'1 (5.62m x 2.77m)

Kitchen: 6'6 x 6'6 (1.98m x 1.98m)

Bedroom: 6'7 x 6'5 (2.01m x 1.96m)

Bathroom

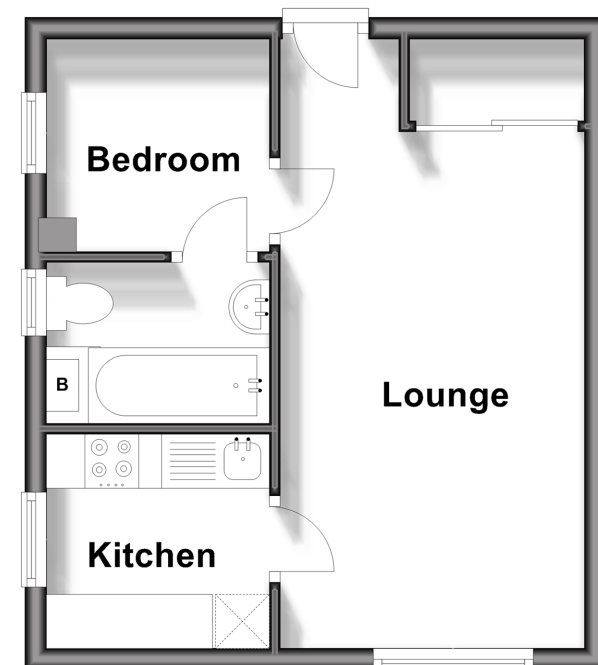
### OUTSIDE

Communal Garden

Resident's Parking

## First Floor

Approx. 28.1 sq. metres (302.9 sq. feet)



**Call Chatham - 01634 841243 ■ [wardsof Kent.co.uk](http://wardsof Kent.co.uk)**

■ Legal advice should be taken to verify fixtures/fittings, planning, alterations and/or lease details

■ Appliances & services are untested, dimensions are approximate and floor plans are not to scale



10430599/20240613/AP/BC