



OVER 60?

Secure this property
for up to **59% less!**

Price

£400,000

Leasehold

3x  2x  1x 

**North Stables, Church
Lane, The Historic
Dockyard, Chatham,
Kent, ME4**

Wards
Helping you move forwards



Main features

- **Grade II listed, mid 18th century end of terrace mews house**
- **Part of former stable block conversion in Historic Dockyard**
- **An individual property with superb living space**
- **Private patio, communal gardens, resident's parking and private garage**

Accommodation

GROUND FLOOR

Cloakroom

Kitchen/Diner: 16'4 x 15'8 (4.98m x 4.78m)

Lounge: 16'5 x 13'1 (5.01m x 3.99m)

FIRST FLOOR

Landing

Bedroom 1: 16'11 x 9'6 (5.16m x 2.90m)

En-suite Shower Room

Bedroom 2: 16'5 x 8'1 (5.01m x 2.47m)

Bedroom 3: 9'11 x 9'10 (3.02m x 3.00m)

Bathroom

OUTSIDE

Private Patio Garden

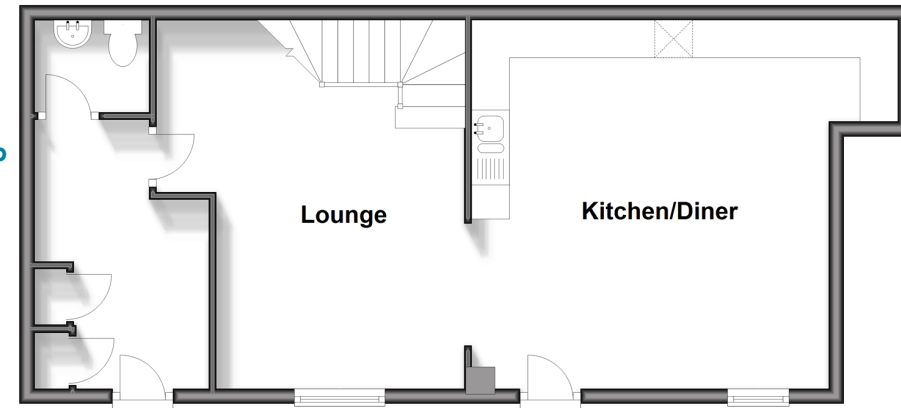
Communal Gardens

Garage

Resident's Parking

Ground Floor

Approx. 52.9 sq. metres (569.8 sq. feet)



First Floor

Approx. 56.2 sq. metres (604.8 sq. feet)



Call Chatham - 01634 841243 ■ wardsof Kent.co.uk

- Legal advice should be taken to verify fixtures/fittings, planning, alterations and/or lease details
- Appliances & services are untested, dimensions are approximate and floor plans are not to scale
- Through a Homewise Home For Life Plan people aged 60+ can secure this property for up to 59% less, by purchasing a Lifetime Lease.



10435522/20240610/AP/BC