



Price
£240,000

Freehold

3x  1x  1x 

**Scotts Terrace,
Chatham, Kent, ME4**

OVER 60?

Secure this property
for up to **59% less!**

Wards
Helping you move forwards



Main features

- Victorian terraced house in great condition throughout
- Large lounge/diner, perfect for a young family
- Excellent for a first time buyer or as a buy to let investment
- 0.4 miles away from railway station, ideal for commuters
- Walking to distance to local schools and town centre

Accommodation

GROUND FLOOR

- Lounge/Diner: 24'7 x 13'0 (7.50m x 3.97m)
- Kitchen: 9'11 x 7'1 (3.02m x 2.16m)
- Shower Room

BASEMENT

- Cellar Room: 13'4 x 10'7 (4.07m x 3.23m)

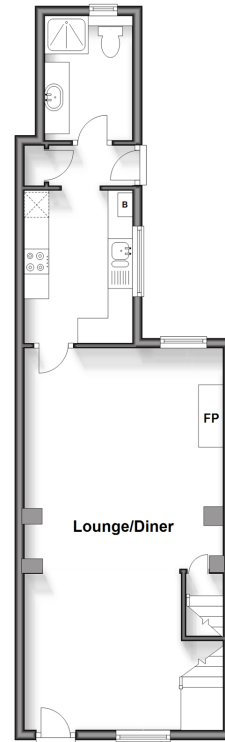
FIRST FLOOR

- Landing
- Bedroom 1: 13'5 x 13'3 (4.09m x 4.04m)
- Bedroom 2: 12'10 x 10'8 (3.91m x 3.25m)
- Bedroom 3: 9'11 x 7'3 (3.02m x 2.21m)

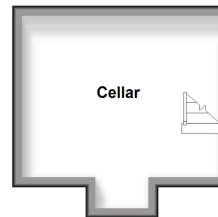
OUTSIDE

- Rear Garden

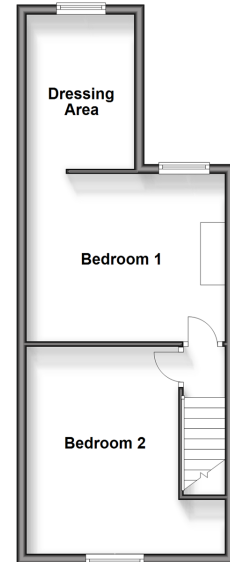
Split Level Ground Floor
Approx. 44.7 sq. metres (480.6 sq. feet)



Basement
Approx. 13.7 sq. metres (147.8 sq. feet)



Split Level First Floor
Approx. 37.9 sq. metres (408.4 sq. feet)



Call Chatham - 01634 841243 ■ wardsofkent.co.uk

- Legal advice should be taken to verify fixtures/fittings, planning, alterations and/or lease details
- Through a Homewise Home For Life Plan people aged 60+ can secure this property for up to 59% less, by purchasing a Lifetime Lease.

- Appliances & services are untested, dimensions are approximate and floor plans are not to scale



10435520/20240601/AP/BC