



Price
£195,000

Freehold

2x  1x  1x 

**East Street, Chatham,
Kent, ME4**

OVER 60?

Secure this property
for up to **59% less!**

Wards
Helping you move forwards



Main features

- Victorian 2 bedroom mid terraced house with useful cellar
- Separate upstairs bathroom
- Good condition throughout, ready to move straight into
- Excellent choice for a first time buyer or an investor
- Great location for local schools and access to road and rail links

Accommodation

GROUND FLOOR

Lounge: 12'3 x 9'5 (3.74m x 2.87m)
 Kitchen/Diner: 12'0 x 9'6 (3.66m x 2.90m)

BASEMENT

Cellar

FIRST FLOOR

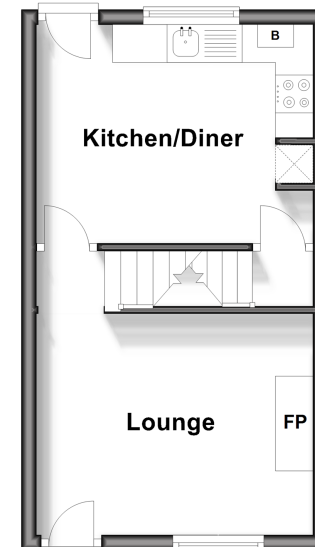
Landing
 Bedroom 1: 12'0 x 9'6 (3.66m x 2.90m)
 Bedroom 2: 9'7 x 6'3 (2.92m x 1.91m)
 Bathroom

OUTSIDE

Rear Garden

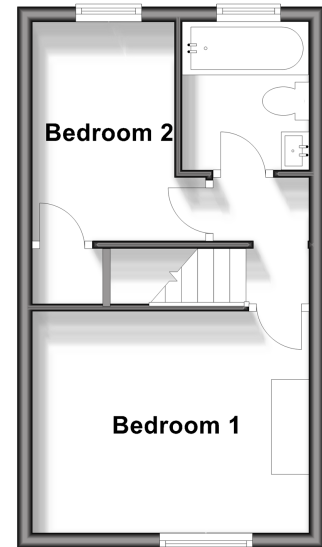
Ground Floor

Approx. 24.8 sq. metres (267.0 sq. feet)



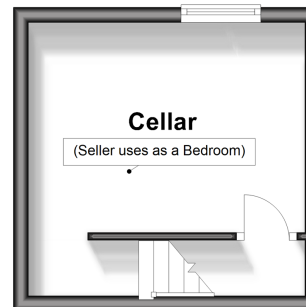
First Floor

Approx. 24.8 sq. metres (267.0 sq. feet)



Basement

Approx. 13.3 sq. metres (142.8 sq. feet)



Call Chatham - 01634 841243 ■ wardsofkent.co.uk

■ Legal advice should be taken to verify fixtures/fittings, planning, alterations and/or lease details
 ■ Through a Homewise Home For Life Plan people aged 60+ can secure this property for up to 59% less, by purchasing a Lifetime Lease.

■ Appliances & services are untested, dimensions are approximate and floor plans are not to scale



10433694/20240513/AP/BC