



Price
£375,000

Freehold

3x  2x  1x 

**Deering Close, St.
Mary's Island, Chatham,
Kent, ME4**

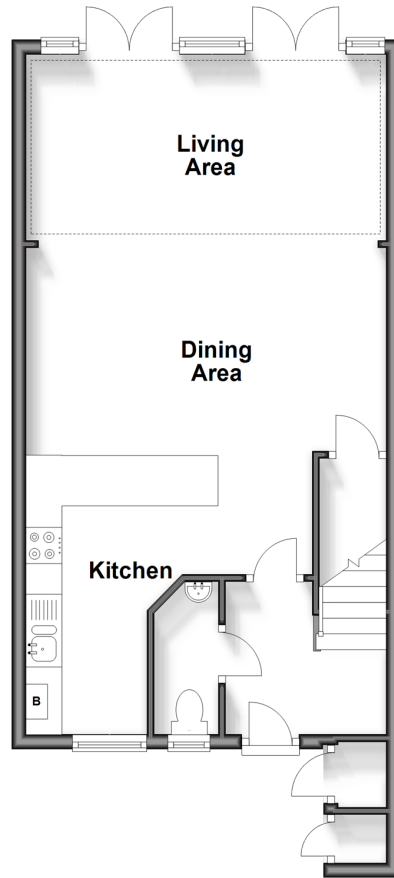
OVER 60?

Secure this property
for up to **59% less!**

Wards
Helping you move forwards

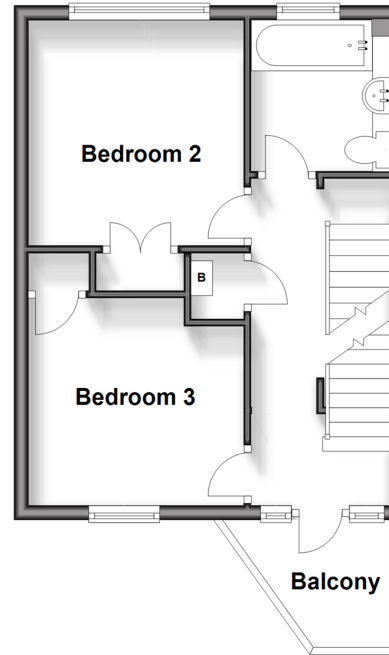
Ground Floor

Approx. 48.1 sq. metres (518.2 sq. feet)



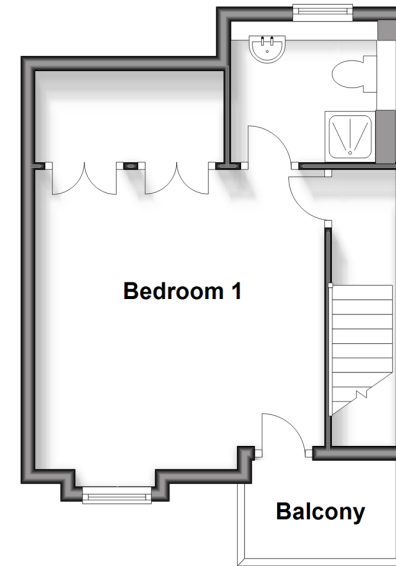
First Floor

Approx. 33.5 sq. metres (360.7 sq. feet)



Second Floor

Approx. 28.6 sq. metres (308.3 sq. feet)



Accommodation

GROUND FLOOR

Entrance Hall
Downstairs Cloakroom
Kitchen: 13'1 x 5'6 (3.99m x 1.68m)
Dining Area: 16'7 x 8'4 (5.06m x 2.54m)
Living Area: 16'5 x 8'9 (5.01m x 2.67m)

FIRST FLOOR

Landing
Balcony
Bedroom 2: 10'3 x 9'10 (3.13m x 3.00m)
Bedroom 3: 9'10 x 9'8 (3.00m x 2.95m)
Bathroom

SECOND FLOOR

Landing
Bedroom 1: 13'4 x 13'1 (4.07m x 3.99m)
En-Suite Shower Room
Balcony

OUTSIDE

Front Garden
Rear Garden
Garage
Parking Space



Main features

- Modern townhouse with garage and parking
- En-suite to bedroom 1, family bathroom and downstairs cloakroom
- Great living space, ample rear garden and two balconies
- Excellent choice for a family or professional couple
- Sought after location on the ever-popular St Mary's Island



Nearest Schools

Primary Schools: St Mary's Island C of E (Aided) Primary 0.1 miles, Chattenden Primary 0.9 miles, Burnt Oak Primary 1.1 miles

Secondary Schools: The Hundred of Hoo Comprehensive



Transport Information

Train Stations: Gillingham 1.5 miles, Strood 1.9 miles, Rochester 2.0 miles



Address

Deering Close, St. Mary's Island, Chatham, Kent, ME4



Directions

For directions to this property please contact us.



Wards
Helping you move forwards

Call Chatham Branch 01634 841243 ■ wardsofkent.co.uk



■ Legal advice should be taken to verify fixtures/fittings, planning, alterations and/or lease details ■ Appliances & services are untested, dimensions are approximate and floor plans are not to scale
■ Through a Homewise Home For Life Plan people aged 60+ can secure this property for up to 59% less, by purchasing a Lifetime Lease.

EPC RATING

CURRENT: C(75) POTENTIAL: B(85)

10435426/20240123/AP/BC