



**OVER 60?**

Secure this property  
for up to **59% less!**

**Price**

**£370,000**

**Freehold**

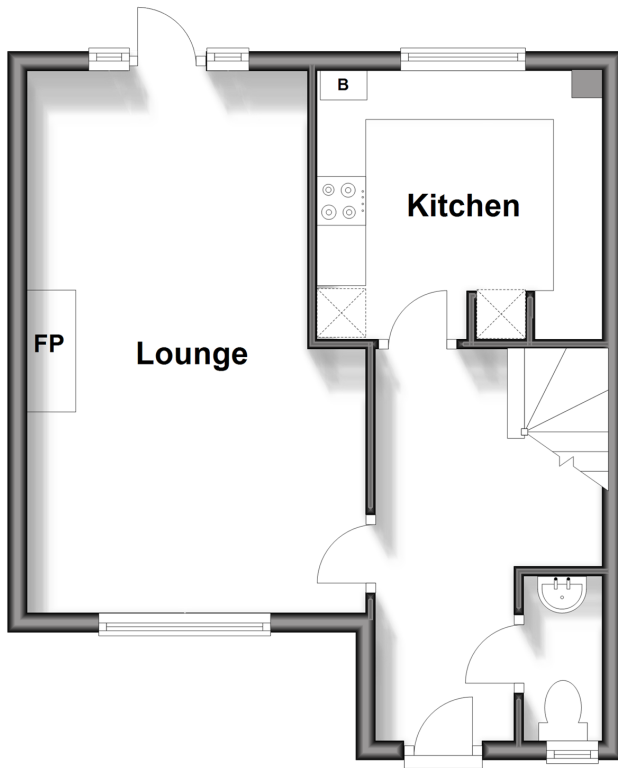
3x  2x  2x 

**Maritime Way, St Mary's  
Island, Chatham, Kent,  
ME4**

*Wards*  
Helping you move forwards

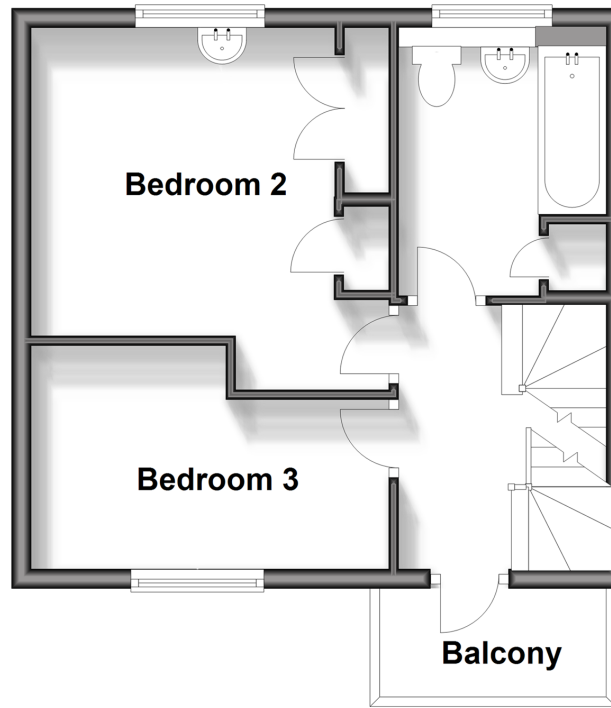
## Ground Floor

Approx. 35.9 sq. metres (386.4 sq. feet)



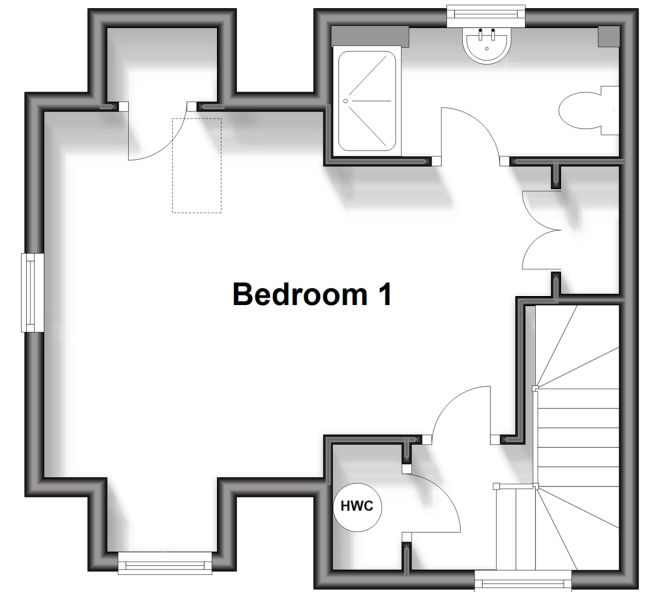
## First Floor

Approx. 32.9 sq. metres (353.6 sq. feet)



## Second Floor

Approx. 29.3 sq. metres (315.5 sq. feet)



## Accommodation

### GROUND FLOOR

Entrance Hallway

Lounge: 18'4 x 11'3 (5.59m x 3.43m)

Kitchen: 9'7 x 8'9 (2.92m x 2.67m)

Cloakroom

### FIRST FLOOR

Landing

Balcony

Bedroom 2: 12'2 x 9'4 (3.71m x 2.85m)

Bedroom 3: 11'11 x 0'0 (3.63m x 0.00m)

Bathroom

### SECOND FLOOR

Landing

Bedroom 1: 17'1 x 12'3 (5.21m x 3.74m)

En-suite Shower Room

### OUTSIDE

Front Garden

Rear Garden

Allocated Parking for 2 cars





## Main features

- Semi-detached town house with parking to rear
- En-suite to bedroom 1, family bathroom and downstairs cloakroom
- Lovely outside space with larger typical rear garden and separate balcony
- Excellent choice for a family or professional couple
- Sought after location at St Mary's Island



### Nearest Schools

Primary School: St Mary's Island C of E (Aided) Primary  
0.1 miles



### Transport Information

Train Stations: Gillingham 1.3 miles, Strood 1.8 miles,  
Rochester 1.8 miles



### Address

Maritime Way, St Mary's Island, Chatham, Kent, ME4



### Directions

For directions to this property please contact us.





*Wards*  
Helping you move forwards

Call Chatham Branch 01634 841243 ■ [wardsofkent.co.uk](http://wardsofkent.co.uk)



- Legal advice should be taken to verify fixtures/fittings, planning, alterations and/or lease details
- Appliances & services are untested, dimensions are approximate and floor plans are not to scale
- Through a Homewise Home For Life Plan people aged 60+ can secure this property for up to 59% less, by purchasing a Lifetime Lease.



10435287/20240326/BC/BC