



Price
£250,000

Freehold

3x  1x  1x 

**Churchill Avenue,
Chatham, Kent, ME5**

OVER 60?

Secure this property
for up to **59% less!**

Wards
Helping you move forwards



Main features

- Semi-detached house with 2 allocated parking spaces
- Ready to move in with room to add your own stamp
- Upstairs family bathroom and downstairs cloakroom
- Brilliant location for a choice of local schools and shops
- Excellent choice for first time buyers or those upgrading to a family home.

Accommodation

GROUND FLOOR

Entrance Hall
 Lounge : 14'9 x 9'11 (4.50m x 3.02m)
 Dining Area: 9'8 x 8'2 (2.95m x 2.49m)
 Kitchen : 9'8 x 8'2 (2.95m x 2.49m)
 Downstairs Cloakroom

FIRST FLOOR

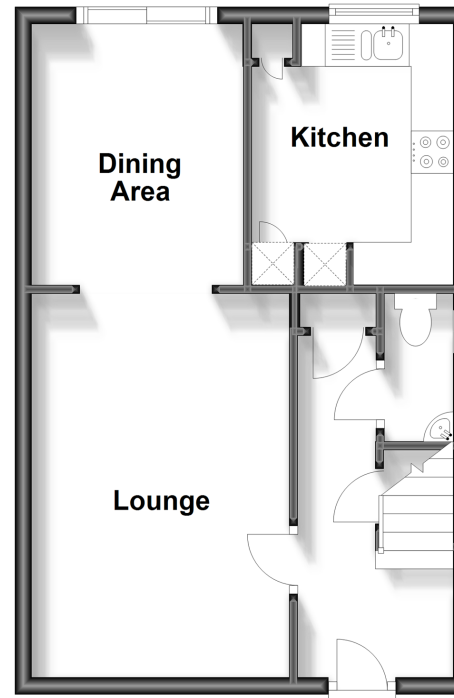
Landing
 Bedroom 1: 10'7 x 10'1 (3.23m x 3.08m)
 Bedroom 2: 12'5 x 7'6 (3.79m x 2.29m)
 Bedroom 3: 8'8 x 7'1 (2.64m x 2.16m)
 Bathroom

OUTSIDE

Front Garden
 Rear Garden
 2 x Allocated Parking Spaces

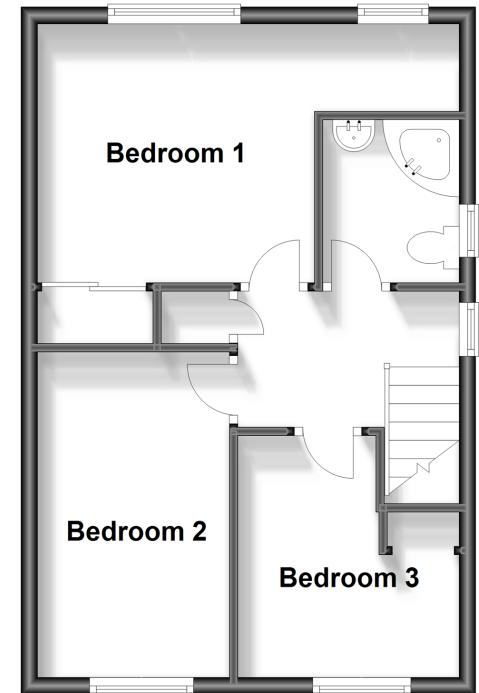
Ground Floor

Approx. 38.6 sq. metres (415.4 sq. feet)



First Floor

Approx. 38.6 sq. metres (415.4 sq. feet)



Call Chatham - 01634 841243 ■ wardsofkent.co.uk

■ Legal advice should be taken to verify fixtures/fittings, planning, alterations and/or lease details
 ■ Through a Homewise Home For Life Plan people aged 60+ can secure this property for up to 59% less, by purchasing a Lifetime Lease.

■ Appliances & services are untested, dimensions are approximate and floor plans are not to scale



10433222/20240113/AP/BC