



Price
£400,000

Freehold

2x  1x  1x 

**School Lane,
Stourmouth, Canterbury,
Kent, CT3**

OVER 60?

Secure this property
for up to **59% less!**

Wards
Helping you move forwards



Main features

- Well presented throughout, ready for you to move straight into
- Cosy lounge with a log burner
- Garage and large driveway
- Quiet no through road location in a rural village
- Potential to extend and develop subject to the necessary planning permissions being obtained

Accommodation

GROUND FLOOR

Entrance Porch: 5'2 x 3'6 (1.58m x 1.07m)

Entrance Hallway

Lounge: 17'7 x 11'8 (5.36m x 3.56m)

Bedroom 1: 13'4 x 11'8 (4.07m x 3.56m)

Bedroom 2: 10'4 x 10'1 (3.15m x 3.08m)

Shower Room: 5'5 x 5'2 (1.65m x 1.58m)

Separate Toilet

Kitchen/Diner: 17'7 x 10'0 (5.36m x 3.05m)

Conservatory: 8'2 x 5'9 (2.49m x 1.75m)

OUTBUILDING

Garage

OUTSIDE

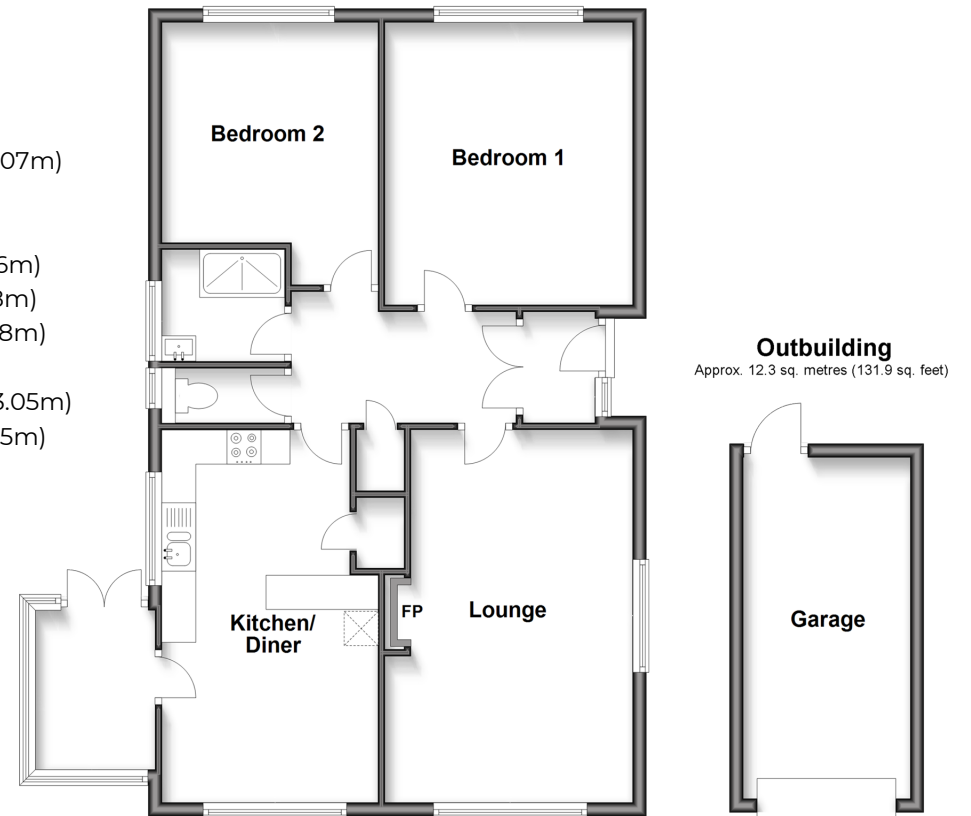
Front Garden

Off Road Parking

Rear Garden

Ground Floor

Approx. 82.2 sq. metres (885.2 sq. feet)



Call Canterbury - 01227 766669 ■ wardsofkent.co.uk

- Legal advice should be taken to verify fixtures/fittings, planning, alterations and/or lease details
- Appliances & services are untested, dimensions are approximate and floor plans are not to scale
- Through a Homewise Home For Life Plan people aged 60+ can secure this property for up to 59% less, by purchasing a Lifetime Lease.



10347690/20250708/TT/JT