



Price
£425,000

Freehold

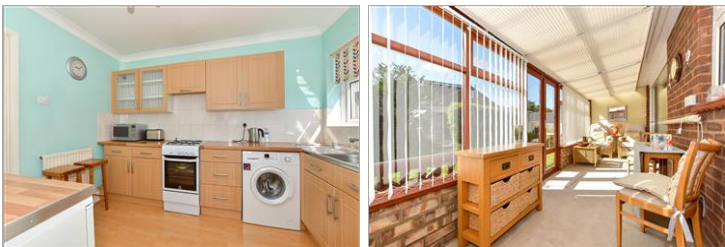
3x  1x  1x 

**Stour Road, Chartham,
Canterbury, Kent, CT4**

OVER 60?

Secure this property
for up to **59% less!**

Wards
Helping you move forwards



Main features

- Adaptable and versatile living space to suit your needs
- Garage and driveway
- Sold with no onward chain
- Envious village location tucked away on a quiet no through road
- Countryside walks on your doorstep
- Beautiful mature rear garden

Accommodation

GROUND FLOOR

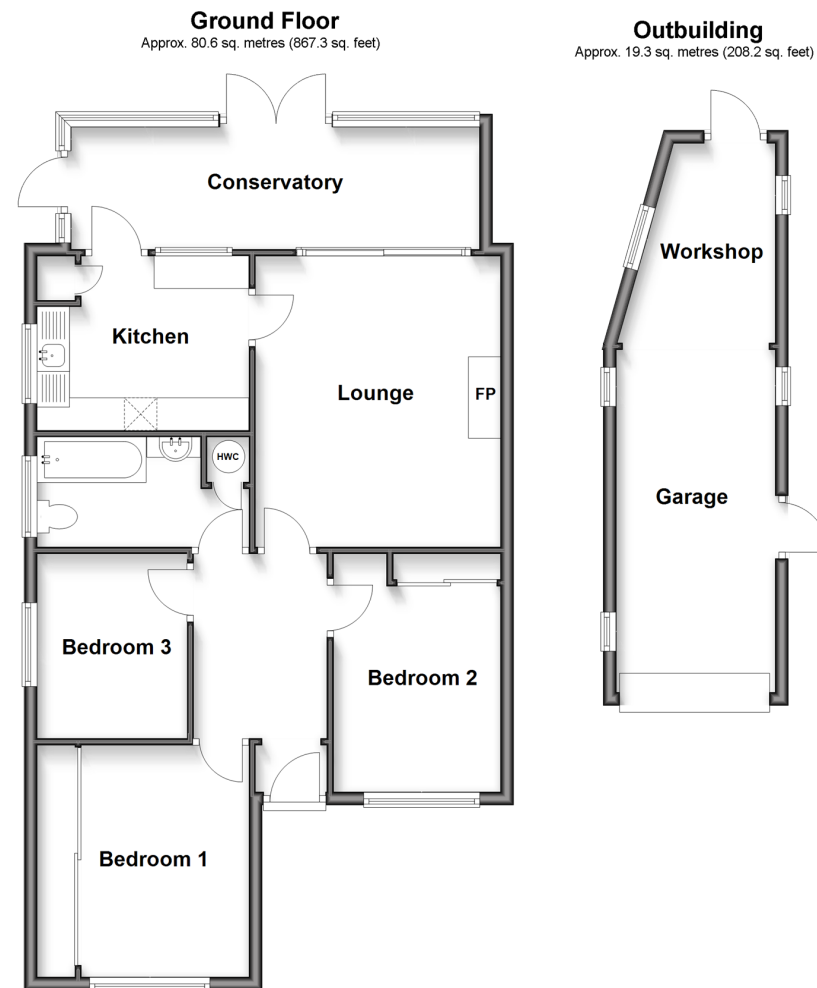
Entrance Hallway: 9'3 x 6'9 (2.82m x 2.06m)
 Bedroom 1: 11'8 x 10'8 (3.56m x 3.25m)
 Bedroom 2: 12'0 x 8'6 (3.66m x 2.59m)
 Bedroom 3: 9'0 x 7'7 (2.75m x 2.31m)
 Bathroom: 10'7 x 5'6 (3.23m x 1.68m)
 Lounge: 15'3 x 12'10 (4.65m x 3.91m)
 Kitchen: 10'6 x 8'8 (3.20m x 2.64m)
 Conservatory: 22'0 x 6'1 (6.71m x 1.86m)

OUTBUILDING

Garage/Workshop

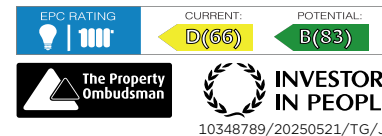
OUTSIDE

Front Garden
 Driveway
 Rear Garden



Call Canterbury - 01227 766669 ■ wardsofkent.co.uk

- Legal advice should be taken to verify fixtures/fittings, planning, alterations and/or lease details
- Appliances & services are untested, dimensions are approximate and floor plans are not to scale
- Through a Homewise Home For Life Plan people aged 60+ can secure this property for up to 59% less, by purchasing a Lifetime Lease.



10348789/20250521/TG/JT