



**Price**  
**£160,000**

**Leasehold**

2x  1x  1x 

**Halstead Close,  
Canterbury, Kent, CT2**

**OVER 60?**

Secure this property  
for up to **59% less!**

*Wards*  
Helping you move forwards





## Main features

- No onward chain complications
- Ideal for first time buyers and investors
- Ever popular area of Hales Place
- Well connected with bus routes nearby
- Walking distance to shops and other amenities

## Accommodation

### SECOND FLOOR

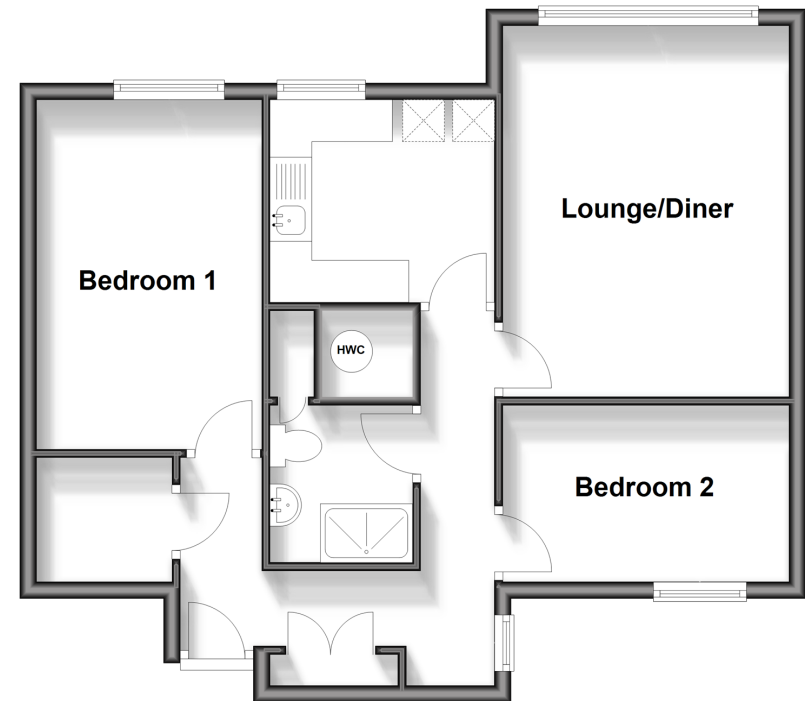
Entrance Hallway  
 Study: 5'4 x 4'8 (1.63m x 1.42m)  
 Bedroom 1: 13'7 x 8'8 (4.14m x 2.64m)  
 Bedroom 2: 11'2 x 6'9 (3.41m x 2.06m)  
 Shower Room  
 Kitchen: 8'7 x 7'8 (2.62m x 2.34m)  
 Lounge/Diner: 14'5 x 11'3 (4.40m x 3.43m)

### OUTSIDE

Communal Parking

## Second Floor

Approx. 58.8 sq. metres (632.5 sq. feet)



Call Canterbury - 01227 766669 ■ [wardsofkent.co.uk](http://wardsofkent.co.uk)

■ Legal advice should be taken to verify fixtures/fittings, planning, alterations and/or lease details  
 ■ Through a Homewise Home For Life Plan people aged 60+ can secure this property for up to 59% less, by purchasing a Lifetime Lease.

■ Appliances & services are untested, dimensions are approximate and floor plans are not to scale