



Price
£325,000

Freehold

3x  2x  1x 

**Winder Place, Aylesham,
Kent, CT3**

Wards
Helping you move forwards



Main features

- Driveway for multiple cars
- Easy to maintain sunny rear garden
- Huge top floor bedroom with en suite shower room
- A great family home ready to move straight into with lots of living space
- Aylesham has plenty to offer with primary schools, local shops, takeaway and public transport

Accommodation

GROUND FLOOR

Entrance Hallway
Cloakroom
Kitchen: 12'8 x 6'2 (3.86m x 1.88m)
Lounge/Diner: 18'8 x 13'2 (5.69m x 4.02m)

FIRST FLOOR

Landing
Bedroom 2: 13'3 x 11'8 (4.04m x 3.56m)
Bathroom
Bedroom 3: 13'3 x 9'7 (4.04m x 2.92m)

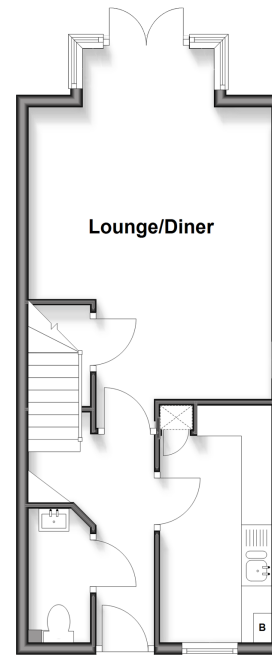
SECOND FLOOR

Bedroom 1: 28'4 x 9'1 (8.64m x 2.77m)
En Suite Shower Room: 8'2 x 6'1 (2.49m x 1.86m)

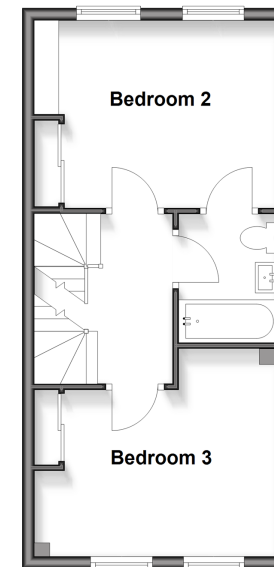
OUTSIDE

Front Garden
Driveway
Rear Garden

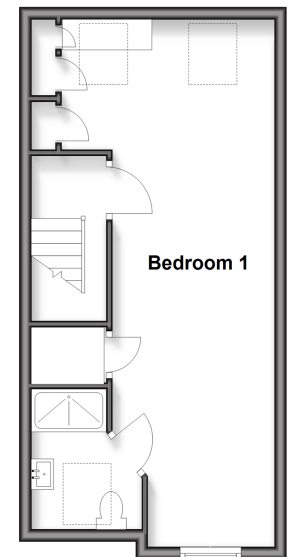
Ground Floor
Approx. 37.4 sq. metres (402.7 sq. feet)



First Floor
Approx. 35.3 sq. metres (380.1 sq. feet)



Second Floor
Approx. 34.2 sq. metres (368.2 sq. feet)



Call Canterbury - 01227 766669 ■ wardsofKent.co.uk

■ Legal advice should be taken to verify fixtures/fittings, planning, alterations and/or lease details

■ Appliances & services are untested, dimensions are approximate and floor plans are not to scale



10348531/20250305/TG/MW