



Price
£350,000

Freehold

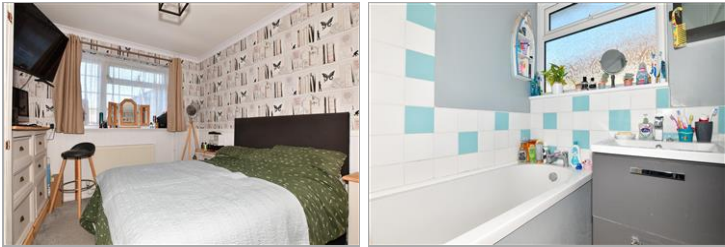
2x  1x  1x 

**Chaucer Close,
Canterbury, Kent, CT1**

OVER 60?

Secure this property
for up to **59% less!**

Wards
Helping you move forwards



Main features

- Situated in a quiet cul de sac location
- Off road parking for multiple vehicles
- Log cabin and covered seating area in the garden, great all year round
- Close to city centre, schools and hospital
- Easy access to the A2

Accommodation

GROUND FLOOR

Entrance Hallway

Bedroom 2: 11'8 x 9'9 (3.56m x 2.97m)

Bedroom 1: 13'9 x 10'2 (4.19m x 3.10m)

Lounge: 18'2 x 11'5 (5.54m x 3.48m)

Kitchen: 8'6 x 7'8 (2.59m x 2.34m)

Cloakroom

Bathroom: 5'4 x 5'0 (1.63m x 1.53m)

OUTSIDE

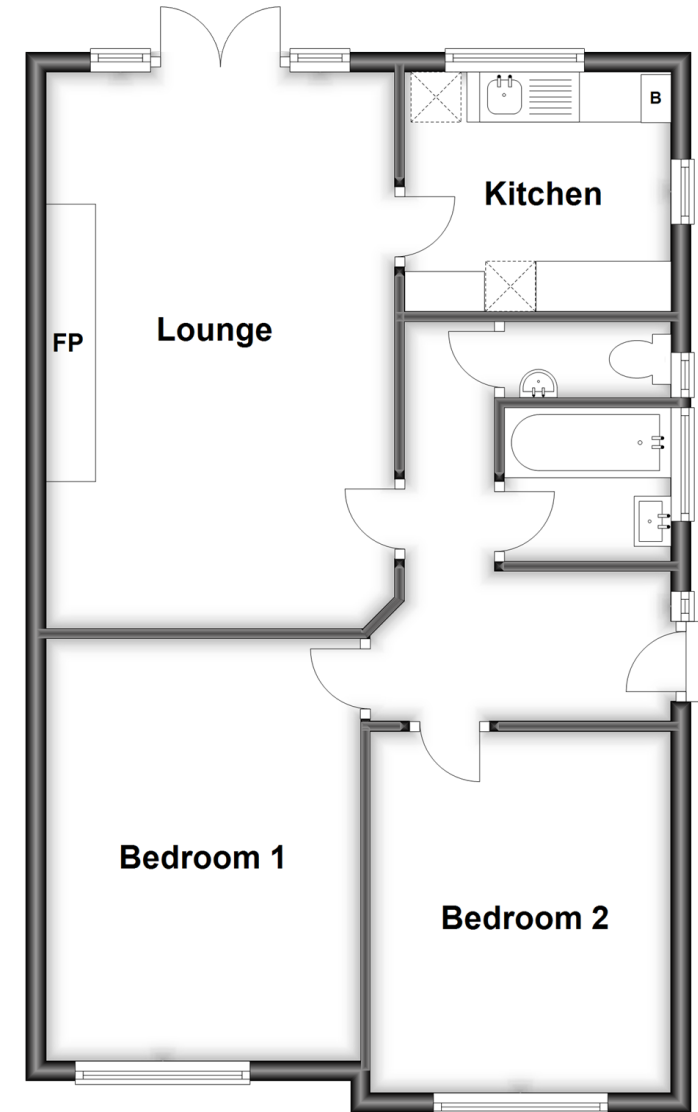
Front Garden

Driveway

Rear Garden

Ground Floor

Approx. 62.9 sq. metres (677.1 sq. feet)



Call Canterbury - 01227 766669 ■ wardsofkent.co.uk

- Legal advice should be taken to verify fixtures/fittings, planning, alterations and/or lease details
- Appliances & services are untested, dimensions are approximate and floor plans are not to scale
- Through a Homewise Home For Life Plan people aged 60+ can secure this property for up to 59% less, by purchasing a Lifetime Lease.



10347722/20250212/TG/CB