



Price
£280,000

Freehold

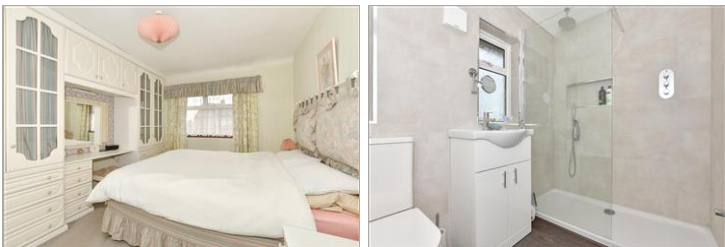
3x  1x  2x 

**Newman Road,
Aylesham, Canterbury,
Kent, CT3**

OVER 60?

Secure this property
for up to **59% less!**

Wards
Helping you move forwards



Main features

- Driveway for multiple cars
- Stunning sunny rear garden
- Single storey extension to the rear which creates lots of living space
- Aylesham offers an amazing village feel with lots of local family run businesses and local events
- Great transport links, bus, train and a couple of minutes drive to the A2

Accommodation

GROUND FLOOR

Entrance Hallway

Sitting Room: 12'7 x 12'2 (3.84m x 3.71m)

Lounge: 18'10 x 9'9 (5.74m x 2.97m)

Kitchen: 17'1 x 6'11 (5.21m x 2.11m)

Dining Area: 11'1 x 10'11 (3.38m x 3.33m)

FIRST FLOOR

Landing

Bedroom 1: 12'7 x 11'9 (3.84m x 3.58m)

Bedroom 2: 11'3 x 10'1 (3.43m x 3.08m)

Bedroom 3: 8'4 x 8'2 (2.54m x 2.49m)

Shower Room

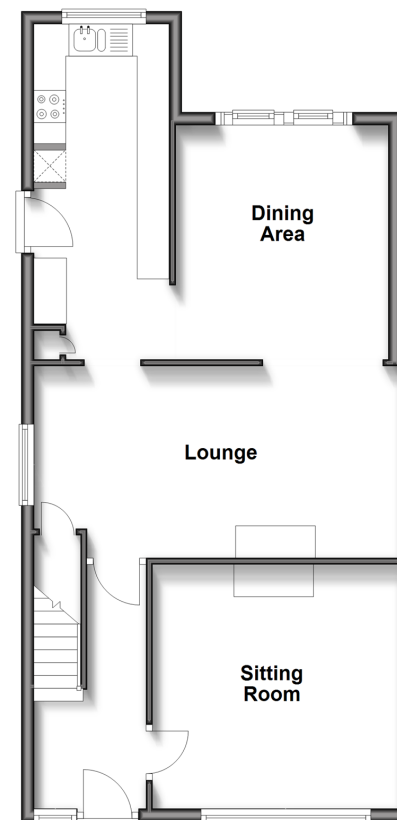
OUTSIDE

Front Garden

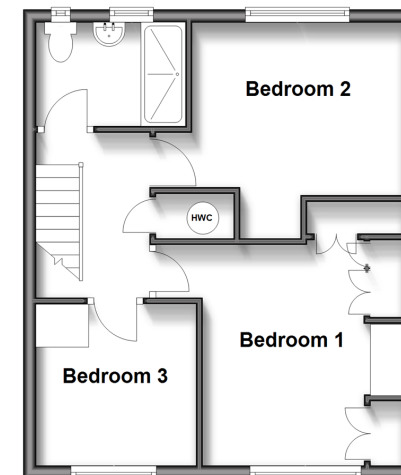
Driveway

Rear Garden

Ground Floor
Approx. 63.8 sq. metres (686.4 sq. feet)



First Floor
Approx. 39.6 sq. metres (426.4 sq. feet)



Call Canterbury - 01227 766669 ■ wardsofKent.co.uk

- Legal advice should be taken to verify fixtures/fittings, planning, alterations and/or lease details
- Appliances & services are untested, dimensions are approximate and floor plans are not to scale
- Through a Homewise Home For Life Plan people aged 60+ can secure this property for up to 59% less, by purchasing a Lifetime Lease.