



**Price**

**£280,000**

**Freehold**

2x  1x  1x 

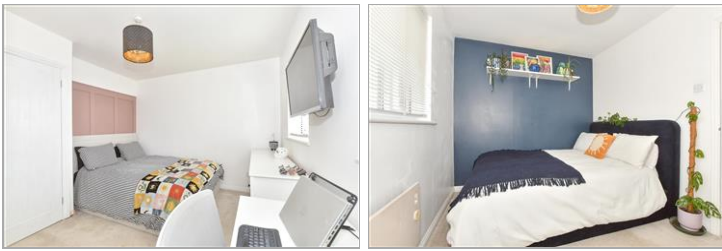
**Maple Court, Hersden,  
Canterbury, Kent, CT3**

**OVER 60?**

Secure this property  
for up to **59% less!**

*Wards*  
Helping you move forwards





## Main features

- Driveway parking
- No onward chain complications
- A short drive to Canterbury city centre
- Recently renovated throughout the home
- Popular village location in Hersden

## Accommodation

### GROUND FLOOR

Entrance Hallway

Kitchen: 11'0 x 6'2 (3.36m x 1.88m)

Lounge/Diner: 14'7 x 12'6 (4.45m x 3.81m)

### FIRST FLOOR

Landing

Bedroom 1: 12'5 x 9'1 (3.79m x 2.77m)

Bedroom 2: 12'6 x 8'5 (3.81m x 2.57m)

Bathroom

### OUTSIDE

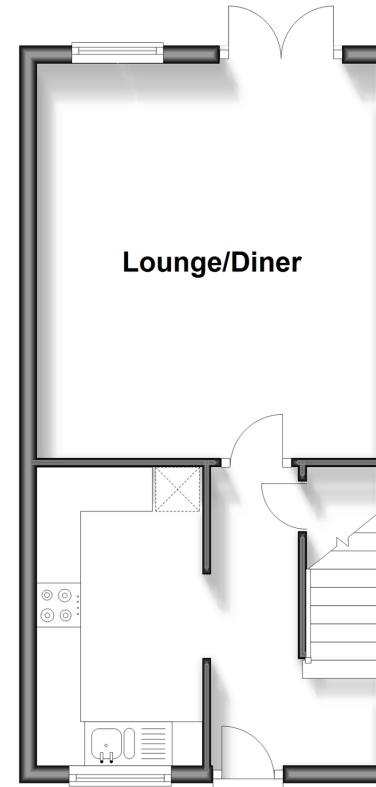
Front Garden

Driveway

Rear Garden

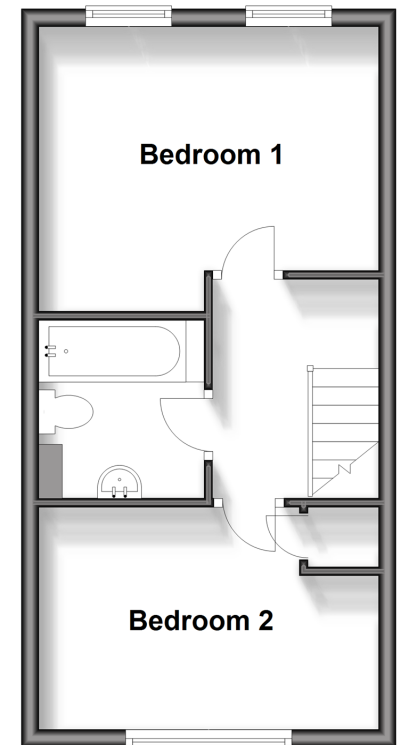
### Ground Floor

Approx. 31.0 sq. metres (333.3 sq. feet)



### First Floor

Approx. 31.0 sq. metres (333.3 sq. feet)



**Call Canterbury - 01227 766669 ■ [wardsofkent.co.uk](http://wardsofkent.co.uk)**

- The seller is a person connected with Wards as defined in the Estate Agents Act 1979
- Legal advice should be taken to verify fixtures/fittings, planning, alterations and/or lease details
- Appliances & services are untested, dimensions are approximate and floor plans are not to scale
- Through a Homewise Home For Life Plan people aged 60+ can secure this property for up to 59% less, by purchasing a Lifetime Lease.



10348972/20250211/CMC/CB