



Price
£300,000

Freehold

3x  2x  1x 

**Dorman Avenue North,
Aylesham, Canterbury,
Kent, CT3**

OVER 60?

Secure this property
for up to **59% less!**

Wards
Helping you move forwards



Main features

- Allocated parking to the rear for 2 cars
- Popular village location
- Good sized rear garden, ideal for children and pets
- Close to local amenities
- Walking distance to the local train station

Accommodation

GROUND FLOOR

Entrance Hallway

Cloakroom

Lounge: 14'3 x 12'1 (4.35m x 3.69m)

Kitchen/Diner: 15'3 x 9'7 (4.65m x 2.92m)

FIRST FLOOR

Landing

Bedroom 1: 12'2 x 9'5 (3.71m x 2.87m)

En Suite Shower Room: 6'4 x 5'4 (1.93m x 1.63m)

Bedroom 2: 9'2 x 7'6 (2.80m x 2.29m)

Bedroom 3: 7'6 x 5'9 (2.29m x 1.75m)

Bathroom: 6'1 x 5'9 (1.86m x 1.75m)

OUTSIDE

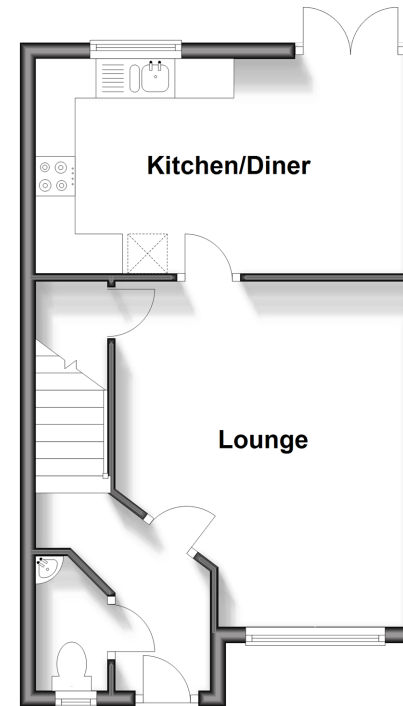
Front Garden

Rear Garden

Allocated Parking Space x 2

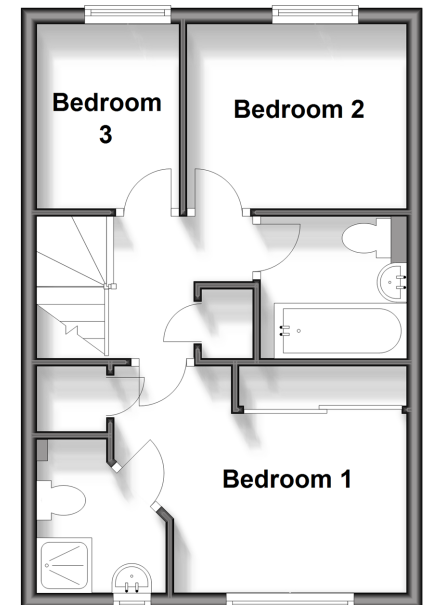
Ground Floor

Approx. 35.6 sq. metres (382.7 sq. feet)



First Floor

Approx. 33.8 sq. metres (363.5 sq. feet)



Call Canterbury - 01227 766669 ■ wardsof Kent.co.uk

- Legal advice should be taken to verify fixtures/fittings, planning, alterations and/or lease details
- Appliances & services are untested, dimensions are approximate and floor plans are not to scale
- Through a Homewise Home For Life Plan people aged 60+ can secure this property for up to 59% less, by purchasing a Lifetime Lease.



10347318/20241127/CB/CB