



OVER 60?

Secure this property
for up to **59% less!**

Price

£250,000

Freehold

2x  1x  1x 

**Goudhurst Close,
Canterbury, Kent, CT2**

Wards
Helping you move forwards



Main features

- Perfect first time purchase
- Good sized garden with elevated decking area
- Allocated parking space to the front
- Beautifully presented throughout, just waiting for you to move straight into
- Great location within an easy drive into the city centre

Accommodation

GROUND FLOOR

Entrance Porch

Entrance Hallway

Lounge/Diner: 15'0 x 11'6 (4.58m x 3.51m)

Kitchen: 11'6 x 7'7 (3.51m x 2.31m)

FIRST FLOOR

Landing

Bedroom 1: 11'6 x 8'11 (3.51m x 2.72m)

Bedroom 2: 11'6 x 7'7 (3.51m x 2.31m)

Bathroom: 8'3 x 5'9 (2.52m x 1.75m)

OUTSIDE

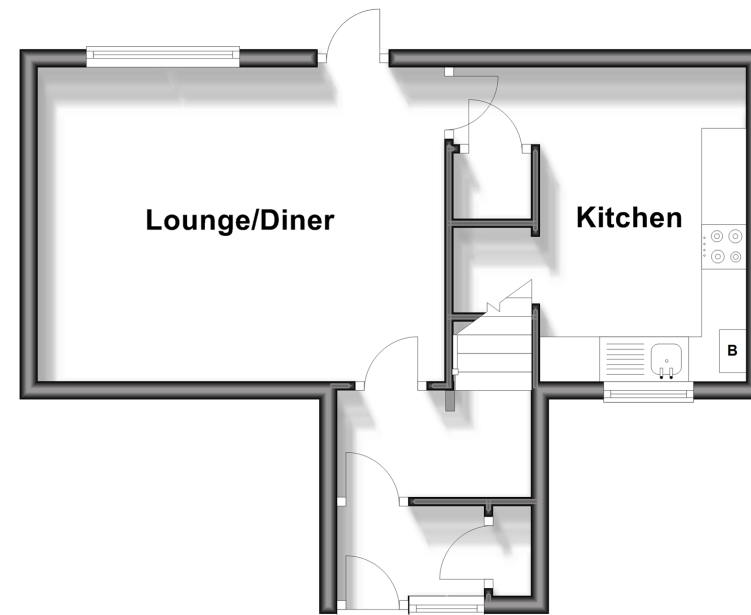
Front Garden

Allocated Parking Space x 1

Rear Garden

Ground Floor

Approx. 33.2 sq. metres (357.4 sq. feet)



First Floor

Approx. 28.0 sq. metres (301.1 sq. feet)



Call Canterbury - 01227 766669 ■ wardsofkent.co.uk

- Legal advice should be taken to verify fixtures/fittings, planning, alterations and/or lease details
- Appliances & services are untested, dimensions are approximate and floor plans are not to scale
- Through a Homewise Home For Life Plan people aged 60+ can secure this property for up to 59% less, by purchasing a Lifetime Lease.



10348910/20241023/TG/JT