



Price

£220,000

Leasehold

2x  1x  1x 

**New Dover Road,
Canterbury, Kent, CT1**

OVER 60?

Secure this property
for up to **59% less!**

Wards
Helping you move forwards



Main features

- Second floor apartment close to the historic City of Canterbury
- Open plan living for that more modern feel
- Balcony overlooking the grounds
- Residents car park
- Walking distance to city centre and Canterbury East train station

Accommodation

SECOND FLOOR

Entrance Hallway

Bathroom: 10'2 x 7'9 (3.10m x 2.36m)

Bedroom 1: 14'1 x 13'7 (4.30m x 4.14m)

Bedroom 2: 15'9 x 12'3 (4.80m x 3.74m)

Lounge/Diner: 16'6 x 16'1 (5.03m x 4.91m)

Balcony

Kitchen: 9'1 x 7'3 (2.77m x 2.21m)

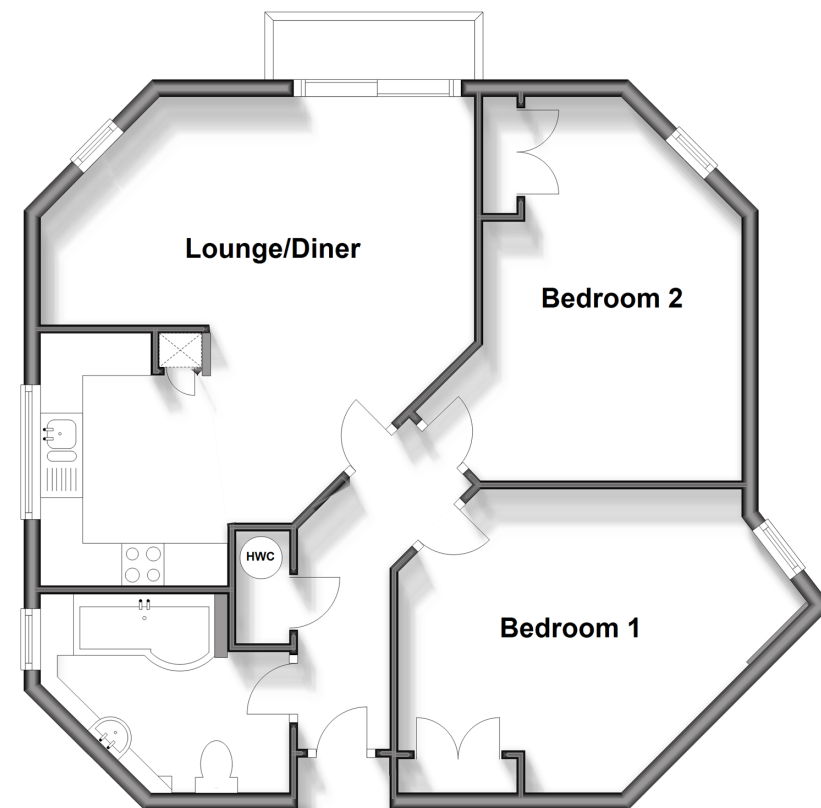
OUTSIDE

Communal Garden

Residents Car Park

Second Floor

Approx. 64.6 sq. metres (695.5 sq. feet)



Call Canterbury - 01227 766669 ■ wardsofkent.co.uk

- Legal advice should be taken to verify fixtures/fittings, planning, alterations and/or lease details
- Appliances & services are untested, dimensions are approximate and floor plans are not to scale
- Through a Homewise Home For Life Plan people aged 60+ can secure this property for up to 59% less, by purchasing a Lifetime Lease.