



OVER 60?

Secure this property
for up to **59% less!**

Price

£500,000

Freehold

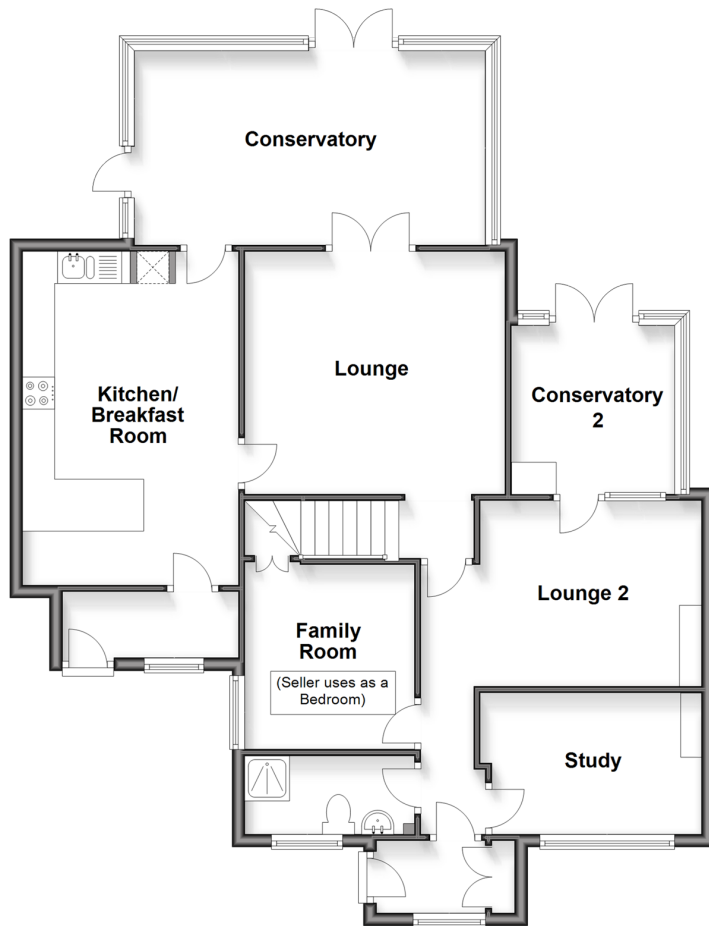
5x  4x  3x 

**Preston Hill, Wingham,
Canterbury, Kent, CT3**

Wards
Helping you move forwards

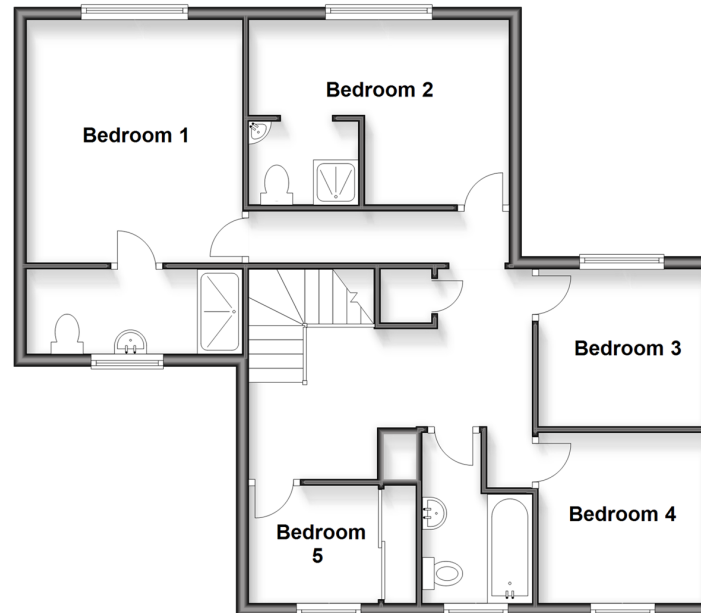
Ground Floor

Approx. 100.8 sq. metres (1085.0 sq. feet)



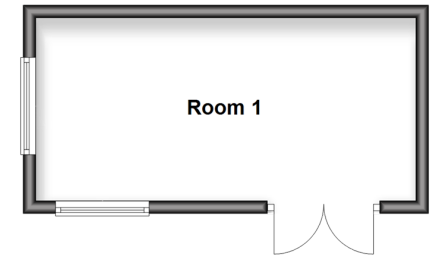
First Floor

Approx. 70.7 sq. metres (760.8 sq. feet)



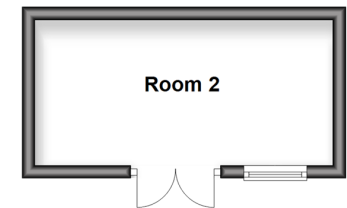
Outbuilding 1

Approx. 16.9 sq. metres (181.8 sq. feet)



Outbuilding 2

Approx. 10.5 sq. metres (113.5 sq. feet)



Accommodation

GROUND FLOOR

Entrance Porch
Entrance Hallway
Shower Room
Study (used as bedroom): 11'9 x 7'3 (3.58m x 2.21m)
Family Room (used as bedroom): 9'9 x 8'10 (2.97m x 2.69m)
Lounge 2: 14'7 x 9'7 (4.45m x 2.92m)
Conservatory 2: 9'2 x 8'9 (2.80m x 2.67m)
Lounge: 13'4 x 12'9 (4.07m x 3.89m)
Entrance Porch 2
Kitchen/Breakfast Room: 17'0 x 11'0 (5.19m x 3.36m)
Conservatory: 19'9 x 10'4 (6.02m x 3.15m)

FIRST FLOOR

Landing
Bedroom 1: 12'9 x 11'0 (3.89m x 3.36m)
En Suite Shower Room
Bedroom 2: 13'4 x 10'0 (4.07m x 3.05m)
En Suite Shower Room
Bedroom 3: 8'6 x 8'0 (2.59m x 2.44m)
Bedroom 4: 8'10 x 8'6 (2.69m x 2.59m)
Bedroom 5 (used as study): 6'9 x 6'0 (2.06m x 1.83m)
Bathroom

OUTBUILDING 1

Room 1: 19'5 x 9'4 (5.92m x 2.85m)

OUTBUILDING 2

Room 2: 15'3 x 7'5 (4.65m x 2.26m)

OUTSIDE

Front Garden
Off Road Parking
Rear Garden



Main features

- Amazing sunny rear garden with bar/summer house
- Separate downstairs living space
- Good size driveway for multiple cars
- Walking distance into Wingham village with its country pubs, restaurants and local shops
- An amazing sized family home with ample living space and bedrooms



Nearest Schools

Primary Schools: Wingham Primary 0.8 miles, Preston Primary 1.5 miles, Wickhambreaux C of E Primary 1.5 miles
Secondary Schools: Spires Academy 3.8 miles, St Anselm's Catholic School 5.4 miles



Transport Information

Train Stations: Adisham 2.9 miles, Bekesbourne 2.9 miles, Aylesham 3.9 miles



Address

Preston Hill, Wingham, Canterbury, Kent, CT3



Directions

For directions to this property please contact us.



Call Canterbury Branch 01227 766669 ■ wardsofkent.co.uk



- The seller is a person connected with Wards as defined in the Estate Agents Act 1979
- Appliances & services are untested, dimensions are approximate and floor plans are not to scale

- Legal advice should be taken to verify fixtures/fittings, planning, alterations and/or lease details
- Through a Homewise Home For Life Plan people aged 60+ can secure this property for up to 59% less, by purchasing a Lifetime Lease.



10348935/20250412/TG/MW