



Price
£325,000

Freehold

3x  2x  1x 

**Lamplight Gardens,
Aylesham, Canterbury,
Kent, CT3**

Wards
Helping you move forwards



Main features

- Beautiful detached Barratt built house
- Low maintenance walled garden
- Well presented throughout
- Garage with electric door, power and parking to the front
- Dual aspect lounge with feature multimedia wall and electric log burner

Accommodation

GROUND FLOOR

Entrance Hallway

Lounge: 16'2 x 10'6 (4.93m x 3.20m)

Cloakroom

Dining Area: 12'8 x 8'5 (3.86m x 2.57m)

Kitchen: 13'2 x 7'3 (4.02m x 2.21m)

Utility Room: 7'5 x 3'7 (2.26m x 1.09m)

FIRST FLOOR

Landing

Bedroom 1: 12'9 x 11'11 (3.89m x 3.63m)

En Suite Shower Room: 7'1 x 4'8 (2.16m x 1.42m)

Bedroom 2: 10'6 x 8'7 (3.20m x 2.62m)

Bedroom 3: 7'3 x 6'11 (2.21m x 2.11m)

Bathroom: 7'8 x 6'3 (2.34m x 1.91m)

OUTBUILDING

Garage

OUTSIDE

Front Garden

Rear Garden

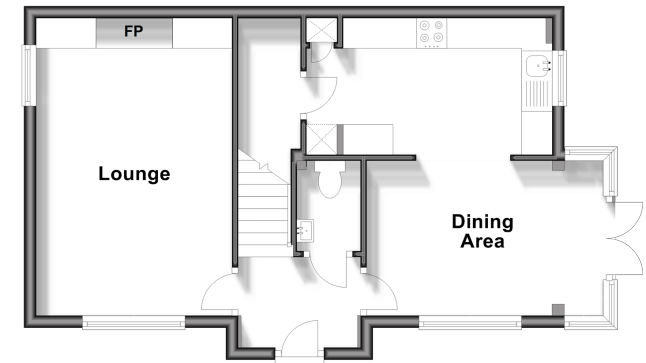
Allocated Parking Space x 1

Call Canterbury - 01227 766669 ■ wardsofkent.co.uk

- The seller is a person connected with Wards as defined in the Estate Agents Act 1979
- Legal advice should be taken to verify fixtures/fittings, planning, alterations and/or lease details
- Appliances & services are untested, dimensions are approximate and floor plans are not to scale

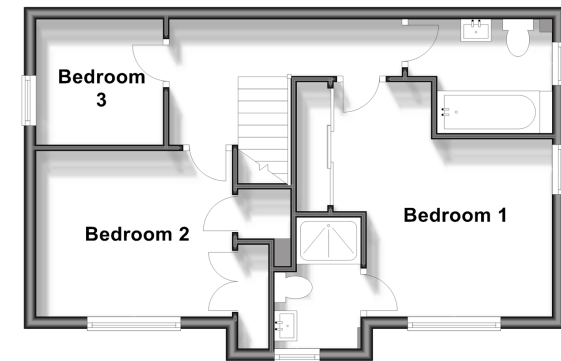
Ground Floor

Approx. 42.8 sq. metres (460.3 sq. feet)



First Floor

Approx. 42.8 sq. metres (460.3 sq. feet)



Outbuilding

Approx. 12.3 sq. metres (132.4 sq. feet)



10348937/20250125/TG/JT