



Price
£280,000

Freehold

2x  2x  1x 

**Dovecote Court,
Chilham Castle Estate,
Chilham, Canterbury,
Kent, CT4**

Wards
Helping you move forwards



Main features

- **Stunning converted semi detached house**
- **Located within Chilham Castles grounds**
- **No onward chain complications**
- **Allocated private parking for 2 cars**
- **Walking distance to Chilhams vibrant pubs, teas/farm shops and local amenities**

Accommodation

GROUND FLOOR

Entrance Hallway

Cloakroom

Lounge/Diner: 24'2 x 10'6 (7.37m x 3.20m)

Kitchen: 11'1 x 9'5 (3.38m x 2.87m)

FIRST FLOOR

Landing

Bedroom 1: 14'8 x 10'6 (4.47m x 3.20m)

En Suite Bathroom: 8'9 x 8'6 (2.67m x 2.59m)

Bedroom 2: 8'5 x 8'5 (2.57m x 2.57m)

Shower Room

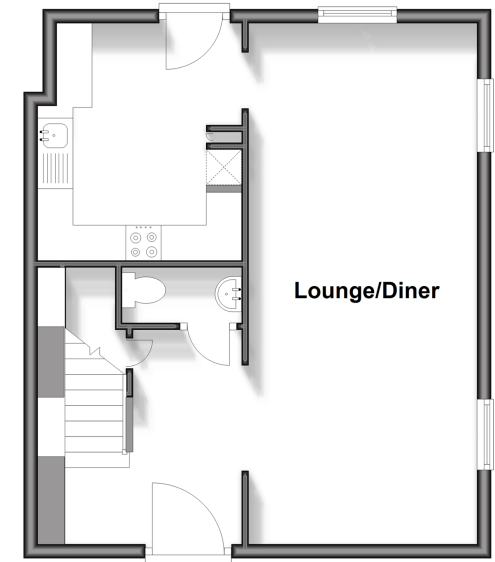
OUTSIDE

Communal Garden

Allocated Parking x 2 cars

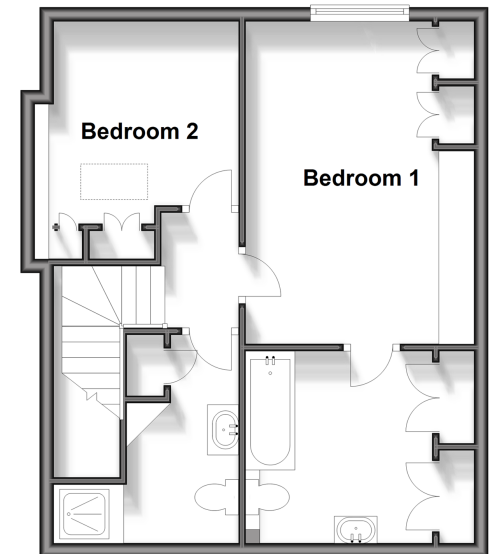
Ground Floor

Approx. 45.7 sq. metres (491.5 sq. feet)



First Floor

Approx. 44.6 sq. metres (479.8 sq. feet)



Call Canterbury - 01227 766669 ■ wardsokent.co.uk

- Legal advice should be taken to verify fixtures/fittings, planning, alterations and/or lease details
- Appliances & services are untested, dimensions are approximate and floor plans are not to scale



10348875/20241031/TG/CB