



Price
£350,000

Freehold

4x  3x  1x 

**Gardeners Place,
Chartham, Canterbury,
Kent, CT4**

OVER 60?

Secure this property
for up to **59% less!**

Wards
Helping you move forwards



Main features

- Garage and 2 x allocated parking spaces
- Recently refurbished kitchen and replacement boiler
- Stunning Juliette balcony overlooking the garden
- Communal garden and gym
- Short drive to Canterbury and the high speed train link into London

Accommodation

GROUND FLOOR

Entrance Hallway
 Bedroom 3: 13'4 x 9'5 (4.07m x 2.87m)
 Bedroom 4: 11'3 x 9'9 (3.43m x 2.97m)
 Shower Room
 Utility Room: 7'6 x 6'3 (2.29m x 1.91m)

FIRST FLOOR

Landing
 Lounge: 16'3 x 14'4 (4.96m x 4.37m)
 Kitchen/Diner: 16'1 x 12'4 (4.91m x 3.76m)

SECOND FLOOR

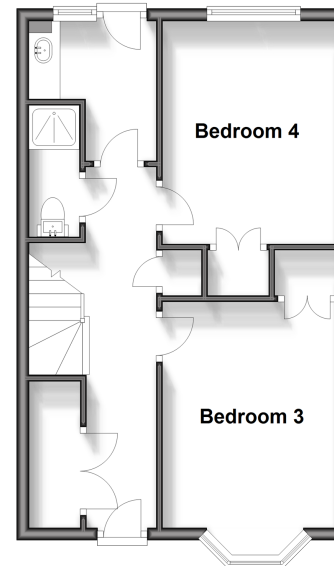
Landing
 Bedroom 1: 13'7 x 10'6 (4.14m x 3.20m)
 En Suite Shower Room: 5'9 x 5'8 (1.75m x 1.73m)
 Bedroom 2: 9'8 x 9'3 (2.95m x 2.82m)
 Bathroom: 8'3 x 6'4 (2.52m x 1.93m)

OUTSIDE

Allocated Parking Space x 2
 Garage
 Rear Garden

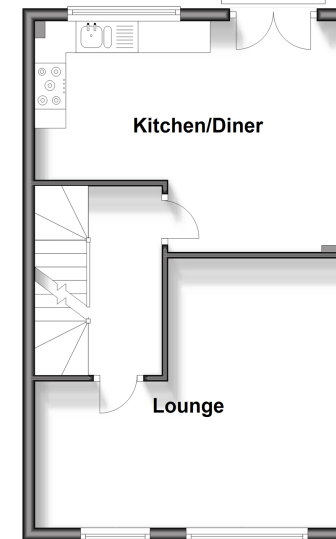
Ground Floor

Approx. 39.9 sq. metres (429.1 sq. feet)



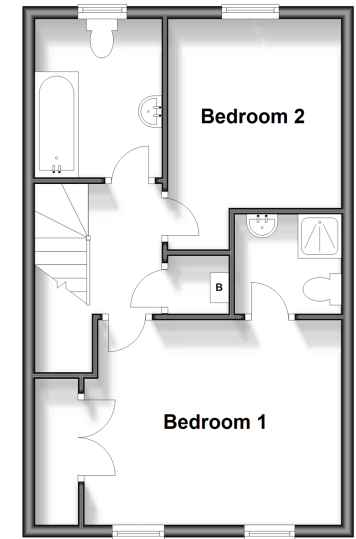
First Floor

Approx. 39.7 sq. metres (427.4 sq. feet)



Second Floor

Approx. 39.7 sq. metres (427.4 sq. feet)



Call Canterbury - 01227 766669 ■ wardsof Kent.co.uk

■ Legal advice should be taken to verify fixtures/fittings, planning, alterations and/or lease details
 ■ Through a Homewise Home For Life Plan people aged 60+ can secure this property for up to 59% less, by purchasing a Lifetime Lease.

■ Appliances & services are untested, dimensions are approximate and floor plans are not to scale



10348895/20241022/CB/CB