



Price
£425,000

Freehold

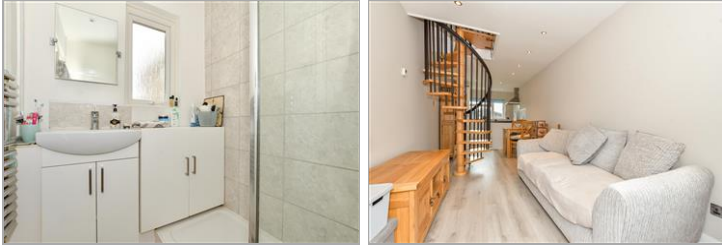
4x  2x  3x 

**The Crescent, Chartham,
Canterbury, Kent, CT4**

OVER 60?

Secure this property
for up to **59% less!**

Wards
Helping you move forwards



Main features

- Off road parking for multiple cars
- Self contained annex attached to the side
- Set in a sought after village with plenty of countryside walks
- Walking distance to the local Chartham primary school and shops
- Great access to London with Chartham train station close by

Accommodation

GROUND FLOOR

- Entrance Hallway
- Lounge: 14'5 x 10'3 (4.40m x 3.13m)
- Kitchen: 13'7 x 6'4 (4.14m x 1.93m)
- Shower Room
- Dining Room: 10'9 x 9'9 (3.28m x 2.97m)
- Cloakroom
- Conservatory: 23'1 x 4'6 (7.04m x 1.37m)

FIRST FLOOR

- Landing
- Bedroom 1: 15'1 x 11'0 (4.60m x 3.36m)
- Bedroom 2: 16'7 x 11'4 (5.06m x 3.46m)
- Bedroom 3: 9'1 x 7'0 (2.77m x 2.14m)

ANNEX

- Annex Lounge: 18'4 x 8'3 (5.59m x 2.52m)
- Annex Kitchen: 9'1 x 8'3 (2.77m x 2.52m)

ANNEX FIRST FLOOR

- Annex Bedroom: 12'7 x 8'2 (3.84m x 2.49m)
- Annex Bathroom: 9'1 x 8'2 (2.77m x 2.49m)

OUTSIDE

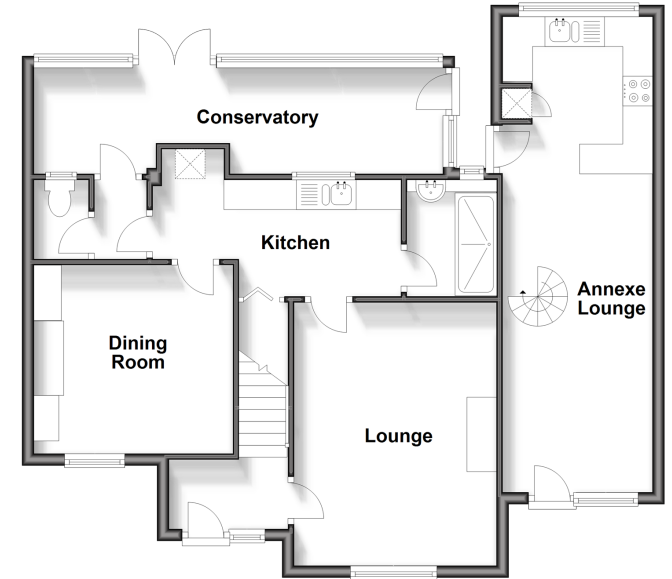
- Front Garden
- Off Road Parking
- Rear Garden

Call Canterbury - 01227 766669 ■ wardsof Kent.co.uk

- Legal advice should be taken to verify fixtures/fittings, planning, alterations and/or lease details
- Appliances & services are untested, dimensions are approximate and floor plans are not to scale
- Through a Homewise Home For Life Plan people aged 60+ can secure this property for up to 59% less, by purchasing a Lifetime Lease.

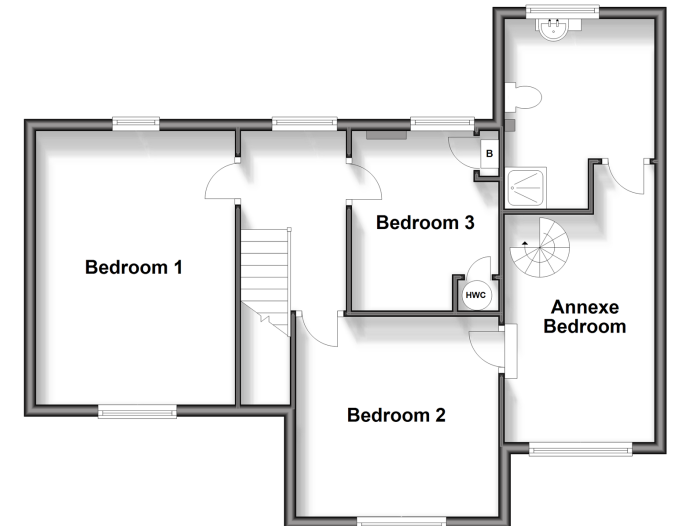
Ground Floor

Approx. 78.3 sq. metres (843.1 sq. feet)



Split Level First Floor

Approx. 60.6 sq. metres (651.8 sq. feet)



10348453/20250305/TG/CB