



OVER 60?

Secure this property
for up to **59% less!**

Price

£310,000

Freehold

3x  1x  2x 

**Grove Terrace,
Canterbury, Kent, CT1**

Wards
Helping you move forwards



Main features

- Within walking distance to the city centre
- Victorian house with lovely period features throughout
- Ideal first-time purchase or investment
- Secure private rear garden
- Large cellar can be used for anything

Accommodation

GROUND FLOOR

Entrance Hallway

Dining Room: 11'9 x 10'4 (3.58m x 3.15m)

Lounge: 13'9 x 10'4 (4.19m x 3.15m)

Kitchen: 9'11 x 7'5 (3.02m x 2.26m)

Conservatory

Bathroom

BASEMENT

Cellar: 13'9 x 11'9 (4.19m x 3.58m)

FIRST FLOOR

Landing

Bedroom 1: 13'9 x 11'9 (4.19m x 3.58m)

Separate Toilet

Bedroom 2: 10'4 x 9'5 (3.15m x 2.87m)

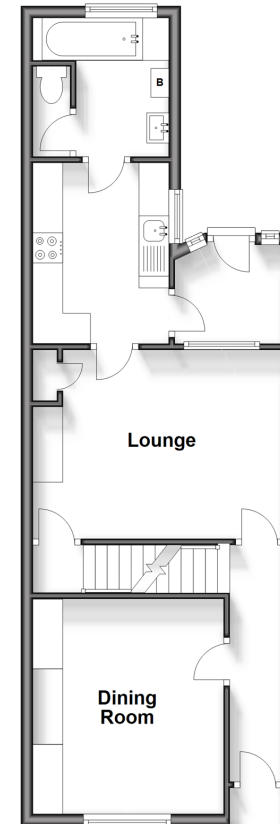
Bedroom 3: 9'11 x 7'7 (3.02m x 2.31m)

OUTSIDE

Rear Garden

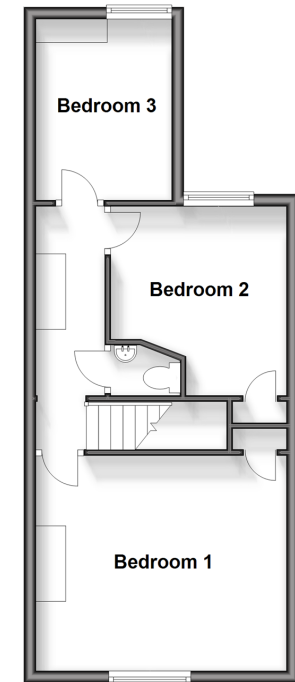
Ground Floor

Approx. 47.4 sq. metres (510.6 sq. feet)



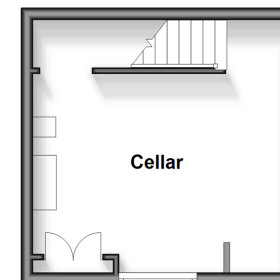
First Floor

Approx. 39.3 sq. metres (422.8 sq. feet)



Basement

Approx. 17.5 sq. metres (188.8 sq. feet)



Call Canterbury - 01227 766669 ■ wardsof Kent.co.uk

- Legal advice should be taken to verify fixtures/fittings, planning, alterations and/or lease details
- Appliances & services are untested, dimensions are approximate and floor plans are not to scale
- Through a Homewise Home For Life Plan people aged 60+ can secure this property for up to 59% less, by purchasing a Lifetime Lease.



10340208/20250315/JT/MIA