



Price
£290,000

Freehold

2x  1x  1x 

**Old Dover Road,
Canterbury, Kent, CT1**

OVER 60?

Secure this property
for up to **59% less!**

Wards
Helping you move forwards



Main features

- Offered for sale with on onward chain
- Character cottage with exposed beams and high ceilings
- Walking distance to the city centre and train station
- Secluded private rear garden
- Ideal first-time purchase on investment

Accommodation

GROUND FLOOR

Hallway

Lounge/Dining Area: 22'6 x 12'6 (6.86m x 3.81m)

Kitchen: 9'6 x 6'2 (2.90m x 1.88m)

Bathroom

FIRST FLOOR

Landing

Bedroom 1: 12'6 x 11'4 (3.81m x 3.46m)

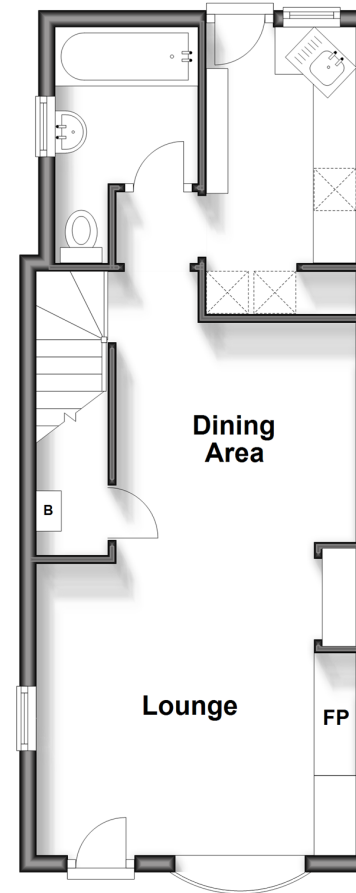
Bedroom 2: 11'1 x 9'8 (3.38m x 2.95m)

OUTSIDE

Front & Rear Gardens

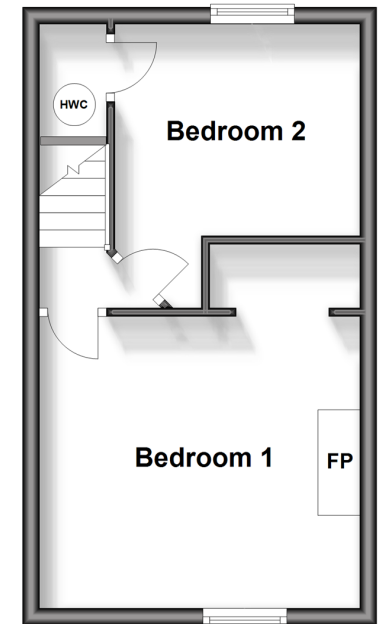
Ground Floor

Approx. 37.1 sq. metres (398.9 sq. feet)



First Floor

Approx. 26.4 sq. metres (284.7 sq. feet)



Call Canterbury - 01227 766669 ■ wardsof Kent.co.uk

- Legal advice should be taken to verify fixtures/fittings, planning, alterations and/or lease details
- Appliances & services are untested, dimensions are approximate and floor plans are not to scale
- Through a Homewise Home For Life Plan people aged 60+ can secure this property for up to 59% less, by purchasing a Lifetime Lease.



17267047/20240910/MB/MIA