



Price
£250,000

Freehold

2x  1x  1x 

**Ivy Lane, Canterbury,
Kent, CT1**

OVER 60?

Secure this property
for up to **59% less!**

Wards
Helping you move forwards



Main features

- Charming grade II listed building
- Offered for sale with no onward chain
- Private low maintenance garden
- Perfect for first time buyer or investor
- Close proximity to the city centre and local amenities

Accommodation

GROUND FLOOR

Entrance Hallway
 Lounge: 9'9 x 9'7 (2.97m x 2.92m)
 Kitchen: 10'9 x 8'1 (3.28m x 2.47m)

FIRST FLOOR

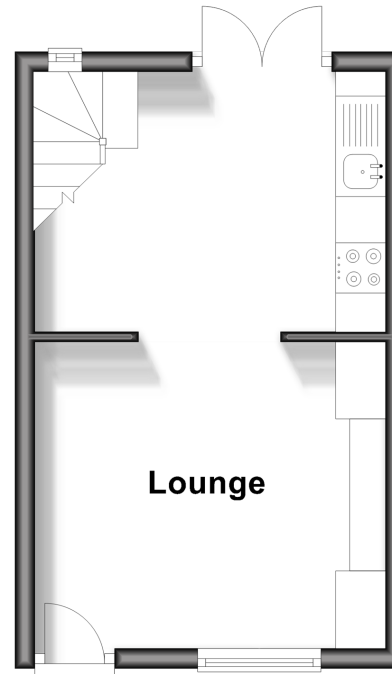
Landing
 Bedroom 1: 10'0 x 9'4 (3.05m x 2.85m)
 Bedroom 2: 8'6 x 5'2 (2.59m x 1.58m)
 Bathroom

OUTSIDE

Front Garden
 Rear Garden

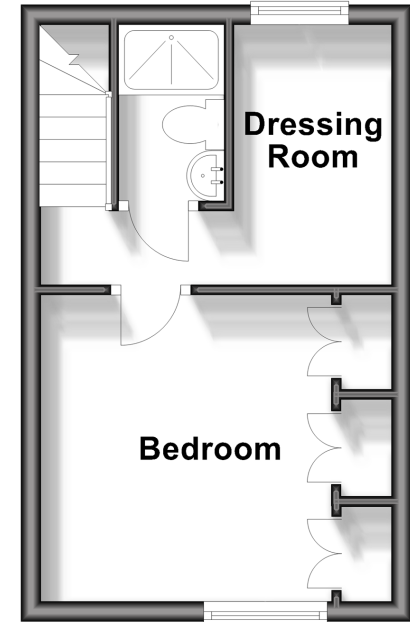
Ground Floor

Approx. 20.2 sq. metres (217.5 sq. feet)



First Floor

Approx. 20.2 sq. metres (217.5 sq. feet)



Call Canterbury - 01227 766669 ■ wardsofkent.co.uk

■ Legal advice should be taken to verify fixtures/fittings, planning, alterations and/or lease details
 ■ Through a Homewise Home For Life Plan people aged 60+ can secure this property for up to 59% less, by purchasing a Lifetime Lease.

■ Appliances & services are untested, dimensions are approximate and floor plans are not to scale



10348577/20241019/JT/MIA